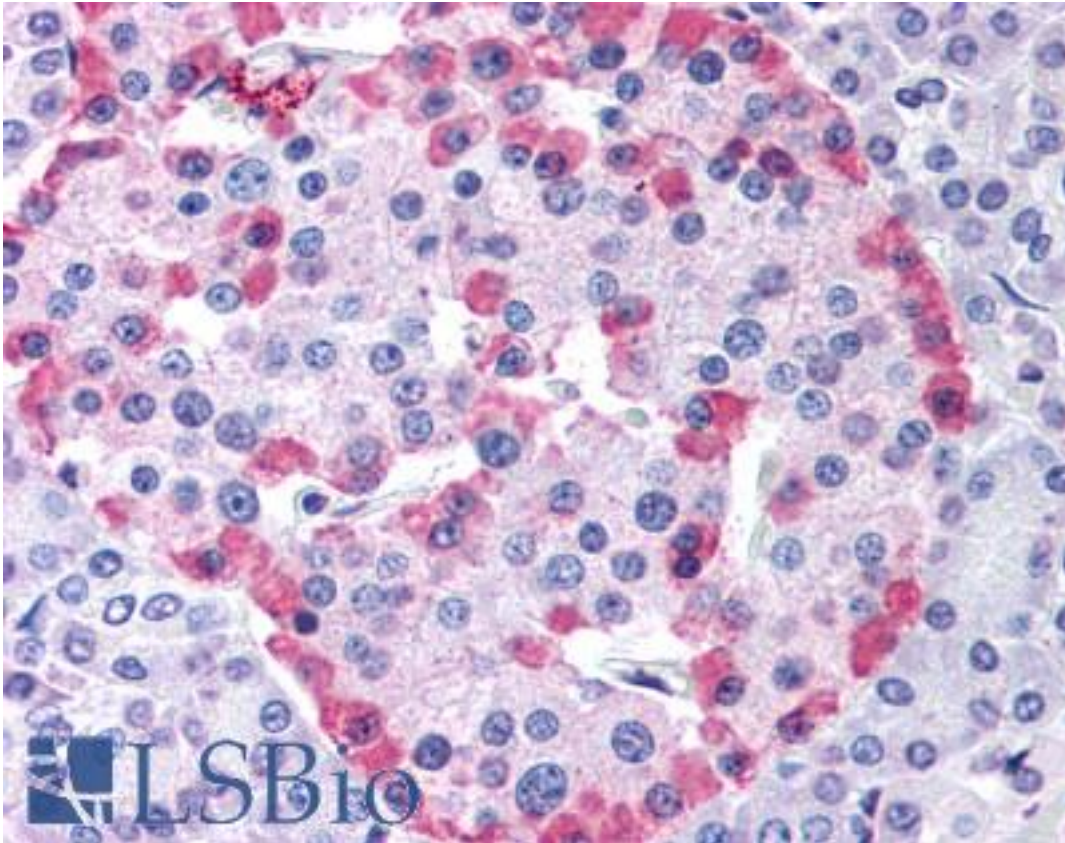


GLP1R/GLP-1R/GLP-1 Receptor Rabbit anti-Human Polyclonal (Cytoplasmic Domain) Antibody - LS-A1208 - LSBio	
CatalogID:	LS-A1208
Target:	glucagon-like peptide 1 receptor (GLP1R)
Synonyms:	GLP1R Antibody, GLP-1-R Antibody, GLP-1 receptor Antibody, GLP-1R Antibody, GLP-1 receptor Antibody, Glp1 receptor Antibody
Family / Subfamily:	GPCR / Glucagon
Host	GLP1R antibody was produced in Rabbit
Clonality:	Polyclonal
Immunogen Species:	GLP1R/GLP-1R/GLP-1 Receptor antibody was raised against Human
Antigen Type:	Synthetic peptide
Immunogen:	GLP1R/GLP-1R/GLP-1 Receptor antibody was raised against synthetic 16 amino acid peptide from 3rd cytoplasmic domain of human GLP1R. Percent identity with other species by BLAST analysis: Human, Gorilla, Gibbon, Monkey, Marmoset, Mouse, Dog, Bat, Hamster, Horse, Rabbit, Pig (100%); Sheep, Bovine, Elephant, Panda (94%); Rat, Opossum (88%); Turkey, Chicken (81%).
Specificity:	Human GLP1R. BLAST analysis of the peptide immunogen showed no homology with other human proteins, except PRPSAP2 (50%).
Epitope:	Cytoplasmic Domain
Reactivity:	Human, Gorilla, Gibbon, Monkey, Mouse, Bat, Dog, Hamster, Horse, Pig, Rabbit
Predicted Reactivity:	Bovine, Sheep
Purification:	Immunoaffinity purified
Presentation:	PBS, 0.1% sodium azide.
Recommended Storage:	Long term: -70°C; Short term: +4°C
Uses:	IHC - Paraffin (6 µg/ml) (Optimal dilution to be determined by the researcher)
Size:	50 µg
Concentration:	1 mg/ml

Immunohistochemistry Image:



Anti-GLP1R antibody LS-A1208 IHC of human pancreas. Immunohistochemistry of formalin-fixed, paraffin-embedded tissue after heat-induced antigen retrieval.

Requested From:

Japan

Laboratory Reagent For In Vitro Research Use Only

Not for resale without prior written consent from LifeSpan BioSciences, Inc.

Created on 9/23/2014

© 2014 LifeSpan BioSciences