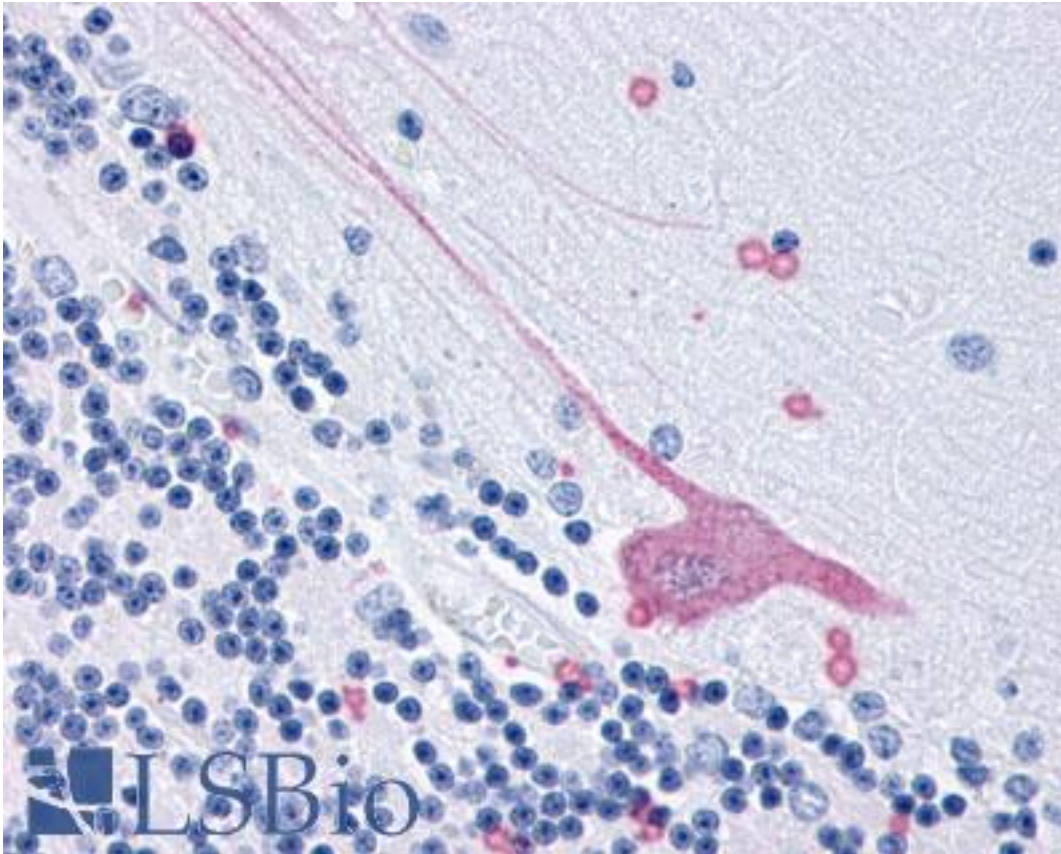


GPR3 Rabbit anti-Human Polyclonal (Extracellular Domain) Antibody - LS-A120 - LSBio	
CatalogID:	LS-A120
Target:	G protein-coupled receptor 3 (GPR3)
Synonyms:	GPR3 Antibody, ACCA Antibody, ACCA orphan receptor Antibody, G protein-coupled receptor 3 Antibody, GPCR3 Antibody, Hacca Antibody, G-protein coupled receptor 3 Antibody
Family / Subfamily:	GPCR / Lysophospholipid/Lysosphingolipid
Host	GPR3 antibody was produced in Rabbit
Clonality:	Polyclonal
Immunogen Species:	GPR3 antibody was raised against Human
Antigen Type:	Synthetic peptide
Immunogen:	GPR3 antibody was raised against synthetic 15 amino acid peptide from 1st extracellular domain of human GPR3. Percent identity with other species by BLAST analysis: Human, Gorilla, Marmoset, Panda, Pig (100%); Gibbon, Monkey, Bovine, Elephant, Horse (93%); Mouse, Rat, Rabbit (87%).
Specificity:	Human GPR3. BLAST analysis of the peptide immunogen showed no homology with other human proteins, except SPPL2A (60%).
Epitope:	Extracellular Domain
Reactivity:	Human, Gorilla, Pig
Predicted Reactivity:	Gibbon, Monkey, Bovine, Horse
Purification:	Immunoaffinity purified
Presentation:	PBS, 0.1% sodium azide.
Recommended Storage:	Long term: -70°C; Short term: +4°C
Uses:	IHC - Paraffin (6 µg/ml) (Optimal dilution to be determined by the researcher)
Size:	50 µg
Concentration:	1 mg/ml

Immunohistochemistry Image:



Anti-GPR3 antibody LS-A120 IHC of human brain. Immunohistochemistry of formalin-fixed, paraffin-embedded tissue after heat-induced antigen retrieval.

Requested From:

Japan

Laboratory Reagent For In Vitro Research Use Only

Not for resale without prior written consent from LifeSpan BioSciences, Inc.

Created on 9/23/2014

© 2014 LifeSpan BioSciences