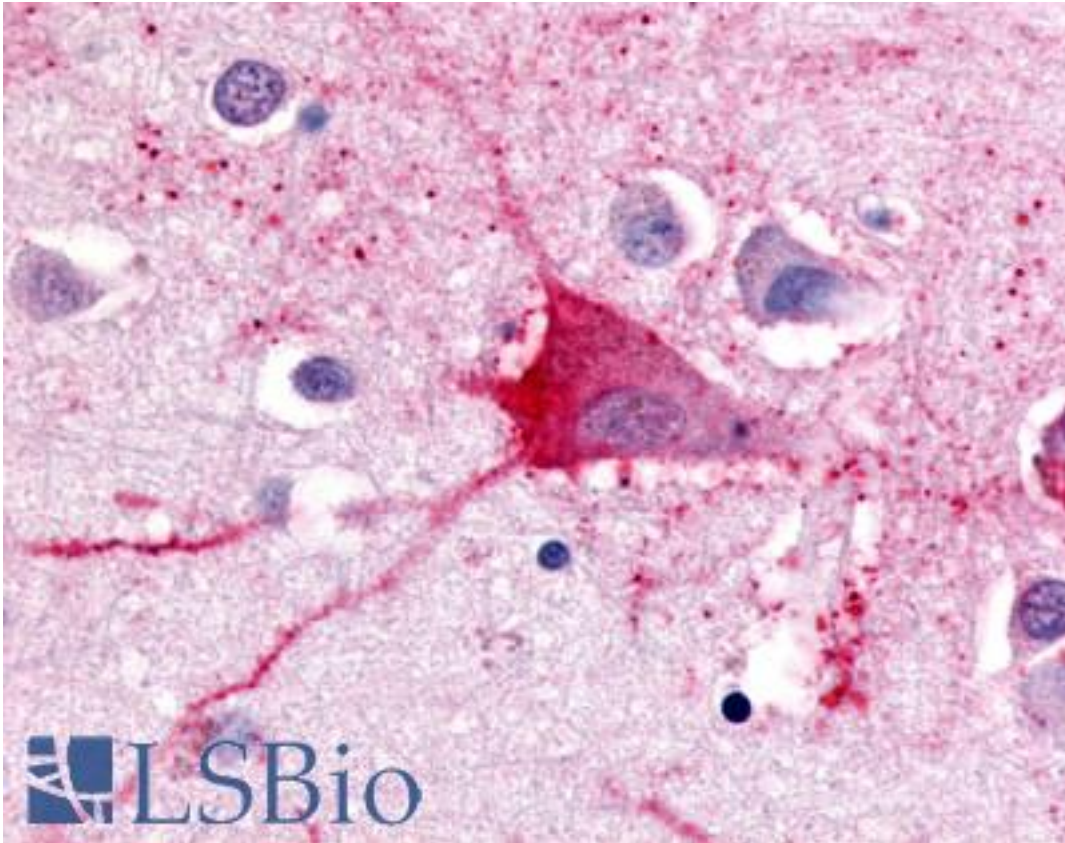


TRH Receptor / TRHR Rabbit anti-Human Polyclonal (Cytoplasmic Domain) Antibody - LS-A1196 - LSBio	
CatalogID:	LS-A1196
Target:	thyrotropin-releasing hormone receptor (TRHR)
Synonyms:	TRHR Antibody, TRH receptor Antibody, TRH-R Antibody, Thyroliberin receptor Antibody
Family / Subfamily:	GPCR / Releasing hormone
Host	TRHR antibody was produced in Rabbit
Clonality:	Polyclonal
Immunogen Species:	TRH Receptor / TRHR antibody was raised against Human
Antigen Type:	Synthetic peptide
Immunogen:	TRH Receptor / TRHR antibody was raised against synthetic 16 amino acid peptide from 3rd cytoplasmic domain of human TRH Receptor. Percent identity with other species by BLAST analysis: Human, Gorilla, Gibbon, Monkey, Marmoset, Rat, Dog, Elephant, Horse (100%); Sheep, Panda, Rabbit, Pig, Xenopus (94%); Mouse, Bovine, Turkey, Platypus (88%); Chicken (81%).
Specificity:	Human TRH Receptor. BLAST analysis of the peptide immunogen showed no homology with other human proteins.
Epitope:	Cytoplasmic Domain
Reactivity:	Human, Gorilla, Gibbon, Monkey, Rat, Dog, Horse
Predicted Reactivity:	Pig, Rabbit, Sheep, Xenopus
Purification:	Immunoaffinity purified
Presentation:	PBS, 0.1% sodium azide.
Recommended Storage:	Long term: -70°C; Short term: +4°C
Uses:	IHC - Paraffin (19 µg/ml) (Optimal dilution to be determined by the researcher)
Size:	50 µg
Concentration:	1 mg/ml

Immunohistochemistry Image:



Anti-TRH Receptor antibody LS-A1196 IHC of human brain, neurons and glia.
Immunohistochemistry of formalin-fixed, paraffin-embedded tissue after heat-induced antigen retrieval.

Requested From:

Japan

Laboratory Reagent For In Vitro Research Use Only

Not for resale without prior written consent from LifeSpan BioSciences, Inc.

Created on 9/23/2014

© 2014 LifeSpan BioSciences