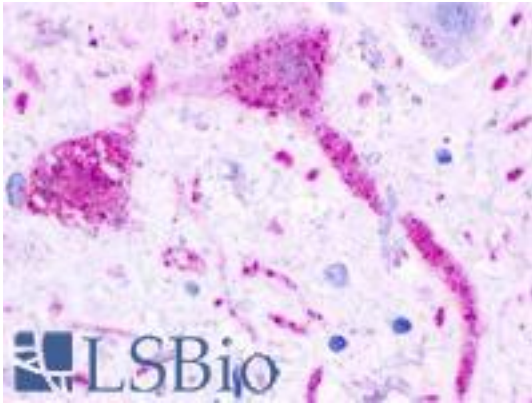


GPR68 / OGR1 Rabbit anti-Human Polyclonal (Extracellular Domain) Antibody - LS-A1193 - LSBio	
<b>CatalogID:</b>	LS-A1193
<b>Target:</b>	G protein-coupled receptor 68 (GPR68)
<b>Synonyms:</b>	GPR68 Antibody, Bgrgb Antibody, G protein-coupled receptor 68 Antibody, G-protein coupled receptor 68 Antibody, OGR1 Antibody, Bgrg1 Antibody, GPR12A Antibody, OGR-1 Antibody
<b>Family / Subfamily:</b>	GPCR / Lysophospholipid/Lysosphingolipid
<b>Host</b>	GPR68 antibody was produced in Rabbit
<b>Clonality:</b>	Polyclonal
<b>Immunogen Species:</b>	GPR68 / OGR1 antibody was raised against Human
<b>Antigen Type:</b>	Synthetic peptide
<b>Immunogen:</b>	GPR68 / OGR1 antibody was raised against synthetic 16 amino acid peptide from 2nd extracellular domain of human GPR68. Percent identity with other species by BLAST analysis: Human, Gorilla, Gibbon (100%); Monkey, Marmoset (94%); Horse (88%).
<b>Specificity:</b>	Human GPR68. BLAST analysis of the peptide immunogen showed no homology with other human proteins.
<b>Epitope:</b>	Extracellular Domain
<b>Reactivity:</b>	Human, Gorilla, Gibbon
<b>Predicted Reactivity:</b>	Monkey
<b>Purification:</b>	Immunoaffinity purified
<b>Presentation:</b>	PBS, 0.1% sodium azide.
<b>Recommended Storage:</b>	Long term: -70°C; Short term: +4°C
<b>Uses:</b>	IHC - Paraffin (1.25 µg/ml) (Optimal dilution to be determined by the researcher)
<b>Size:</b>	50 µg
<b>Concentration:</b>	1 mg/ml

**Immunohistochemistry Image:**



Anti-GPR68 antibody LS-A1193 IHC of human brain, neurons and glia.  
Immunohistochemistry of formalin-fixed, paraffin-embedded tissue after heat-induced antigen retrieval.

**Requested From:**

Japan

Laboratory Reagent For In Vitro Research Use Only

Not for resale without prior written consent from LifeSpan BioSciences, Inc.

Created on 9/23/2014

© 2014 LifeSpan BioSciences