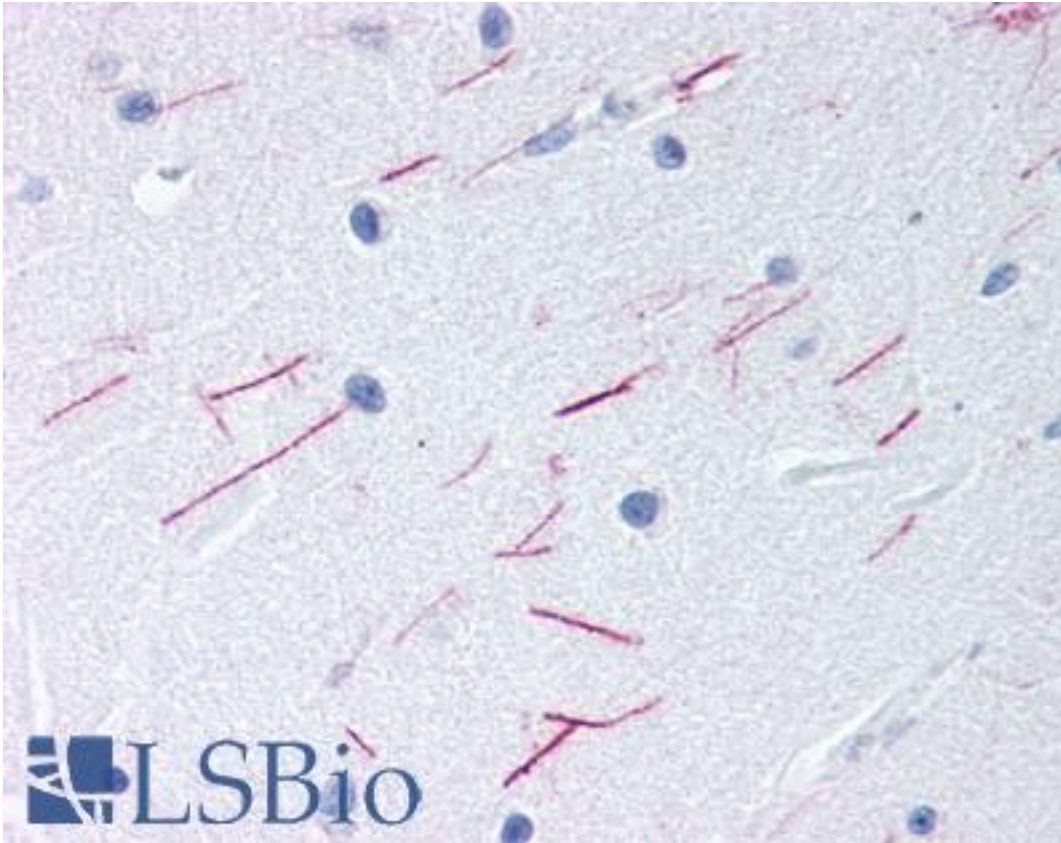


GPR68 / OGR1 Rabbit anti-Human Polyclonal (Cytoplasmic Domain) Antibody - LS-A1192 - LSBio	
CatalogID:	LS-A1192
Target:	G protein-coupled receptor 68 (GPR68)
Synonyms:	GPR68 Antibody, Bgrgb Antibody, G protein-coupled receptor 68 Antibody, G-protein coupled receptor 68 Antibody, OGR1 Antibody, Bgrg1 Antibody, GPR12A Antibody, OGR-1 Antibody
Family / Subfamily:	GPCR / Lysophospholipid/Lysosphingolipid
Host	GPR68 antibody was produced in Rabbit
Clonality:	Polyclonal
Immunogen Species:	GPR68 / OGR1 antibody was raised against Human
Antigen Type:	Synthetic peptide
Immunogen:	GPR68 / OGR1 antibody was raised against synthetic 16 amino acid peptide from 3rd cytoplasmic domain of human GPR68. Percent identity with other species by BLAST analysis: Human, Gorilla, Gibbon, Monkey, Marmoset, Mouse, Rat, Dog, Bovine, Hamster, Panda, Horse, Rabbit, Pig (100%); Bat, Elephant (94%); Platypus (81%).
Specificity:	Human GPR68. BLAST analysis of the peptide immunogen showed no homology with other human proteins.
Epitope:	Cytoplasmic Domain
Reactivity:	Human, Gorilla, Gibbon, Monkey, Mouse, Rat, Bovine, Dog, Hamster, Horse, Pig, Rabbit
Predicted Reactivity:	Bat
Purification:	Immunoaffinity purified
Presentation:	PBS, 0.1% sodium azide.
Recommended Storage:	Long term: -70°C; Short term: +4°C
Uses:	IHC - Paraffin (6 µg/ml) (Optimal dilution to be determined by the researcher)
Size:	50 µg
Concentration:	1 mg/ml

Immunohistochemistry Image:



Anti-GPR68 antibody LS-A1192 IHC of human brain, cerebellum. Immunohistochemistry of formalin-fixed, paraffin-embedded tissue after heat-induced antigen retrieval.

Requested From:

Japan

Laboratory Reagent For In Vitro Research Use Only

Not for resale without prior written consent from LifeSpan BioSciences, Inc.

Created on 9/23/2014

© 2014 LifeSpan BioSciences