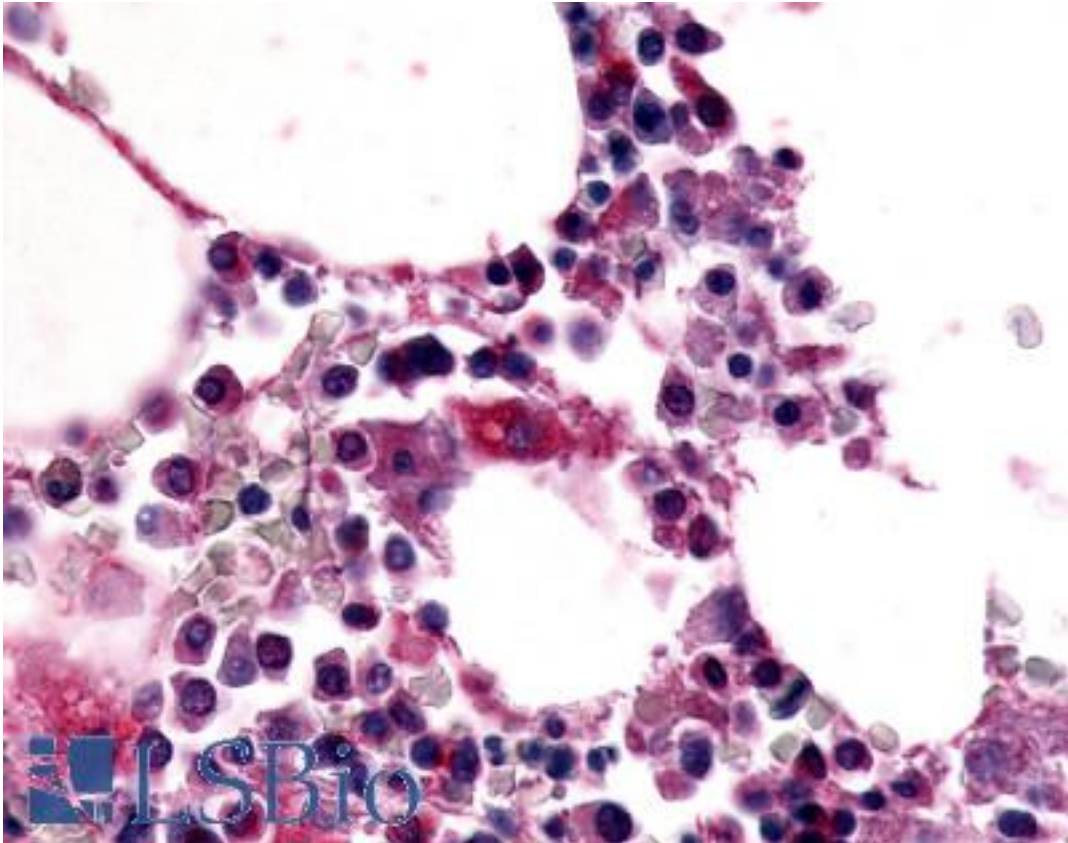


EMR1 / F4/80 Rabbit anti-Human Polyclonal (N-Terminus) Antibody - LS-A1180 - LSBio	
CatalogID:	LS-A1180
Target:	egf-like module containing, mucin-like, hormone receptor-like 1 (EMR1)
Synonyms:	EMR1 Antibody, EMR1 hormone receptor Antibody, F4/80 Antibody, EGF-like module receptor 1 Antibody, TM7LN3 Antibody
Family / Subfamily:	GPCR / Orphan-B
Host	EMR1 antibody was produced in Rabbit
Clonality:	Polyclonal
Immunogen Species:	EMR1 / F4/80 antibody was raised against Human
Antigen Type:	Synthetic peptide
Immunogen:	EMR1 / F4/80 antibody was raised against synthetic 16 amino acid peptide from N-terminal extracellular domain of human EMR1. Percent identity with other species by BLAST analysis: Human, Gorilla, Gibbon (93%); Monkey (87%); Marmoset, Mouse, Rat, Pig, Platypus (80%).
Specificity:	Human EMR1. BLAST analysis of the peptide immunogen showed no homology with other human proteins.
Epitope:	N-Terminus
Reactivity:	Human
Predicted Reactivity:	Gorilla, Gibbon
Purification:	Immunoaffinity purified
Presentation:	PBS, 0.1% sodium azide.
Recommended Storage:	Long term: -70°C; Short term: +4°C
Uses:	IHC - Paraffin (10 - 20 µg/ml) (Optimal dilution to be determined by the researcher)
Size:	50 µg
Concentration:	1 mg/ml

Immunohistochemistry Image:



Anti-EMR1 antibody LS-A1180 IHC of human bone marrow. Immunohistochemistry of formalin-fixed, paraffin-embedded tissue after heat-induced antigen retrieval.

Requested From:

Japan

Laboratory Reagent For In Vitro Research Use Only

Not for resale without prior written consent from LifeSpan BioSciences, Inc.

Created on 9/23/2014

© 2014 LifeSpan BioSciences