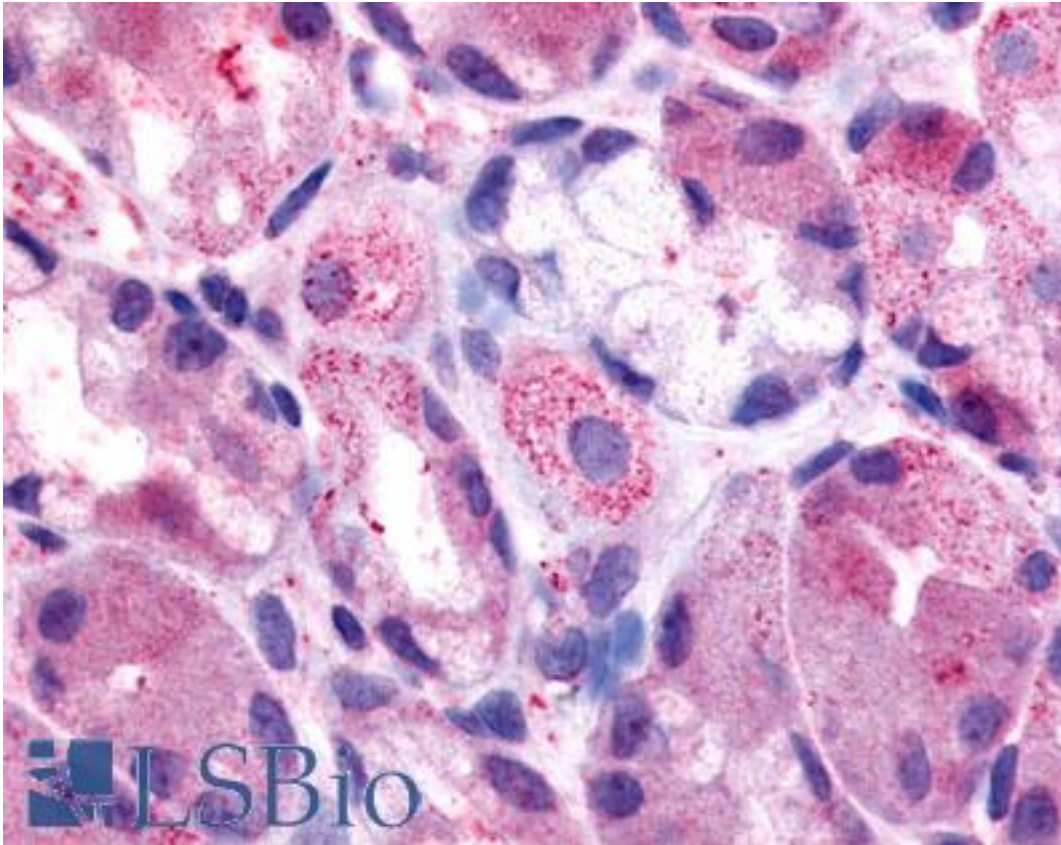


HRH2 / Histamine H2 Receptor Rabbit anti-Human Polyclonal (Extracellular Domain) Antibody - LS-A1176 - LSBio	
CatalogID:	LS-A1176
Target:	histamine receptor H2 (HRH2)
Synonyms:	HRH2 Antibody, Gastric receptor I Antibody, H2R Antibody, Histamine 2 receptor Antibody, Gastric receptor 1 Antibody, H2 histamine receptor Antibody, HH2R Antibody, Histamine type 2 receptor Antibody, Histamine H2 receptor Antibody, Histamine receptor H2 Antibody
Family / Subfamily:	GPCR / Histamine
Host	HRH2 antibody was produced in Rabbit
Clonality:	Polyclonal
Immunogen Species:	HRH2 / Histamine H2 Receptor antibody was raised against Human
Antigen Type:	Synthetic peptide
Immunogen:	HRH2 / Histamine H2 Receptor antibody was raised against synthetic 16 amino acid peptide from 3rd extracellular domain of human HRH2 / Histamine H2 Receptor. Percent identity with other species by BLAST analysis: Human, Chimpanzee, Gorilla, Orangutan, Gibbon, Monkey, Rat (100%); Marmoset, Mouse, Bat, Hamster (94%); Dog, Elephant, Panda, Rabbit (88%); Guinea pig (81%).
Specificity:	Human HRH2 / Histamine H2 Receptor. BLAST analysis of the peptide immunogen showed no homology with other human proteins.
Epitope:	Extracellular Domain
Reactivity:	Human, Chimpanzee, Gorilla, Orangutan, Gibbon, Rat
Predicted Reactivity:	Monkey, Mouse, Bat, Hamster
Purification:	Immunoaffinity purified
Presentation:	PBS, 0.1% sodium azide.
Recommended Storage:	Long term: -70°C; Short term: +4°C
Uses:	IHC - Paraffin (18 µg/ml) (Optimal dilution to be determined by the researcher)
Size:	50 µg
Concentration:	1 mg/ml

Immunohistochemistry Image:



Anti-HRH2 / Histamine H2 Receptor antibody LS-A1176 IHC of human stomach, parietal cells. Immunohistochemistry of formalin-fixed, paraffin-embedded tissue after heat-induced antigen retrieval.

Requested From:

Japan

Laboratory Reagent For In Vitro Research Use Only

Not for resale without prior written consent from LifeSpan BioSciences, Inc.

Created on 9/23/2014

© 2014 LifeSpan BioSciences