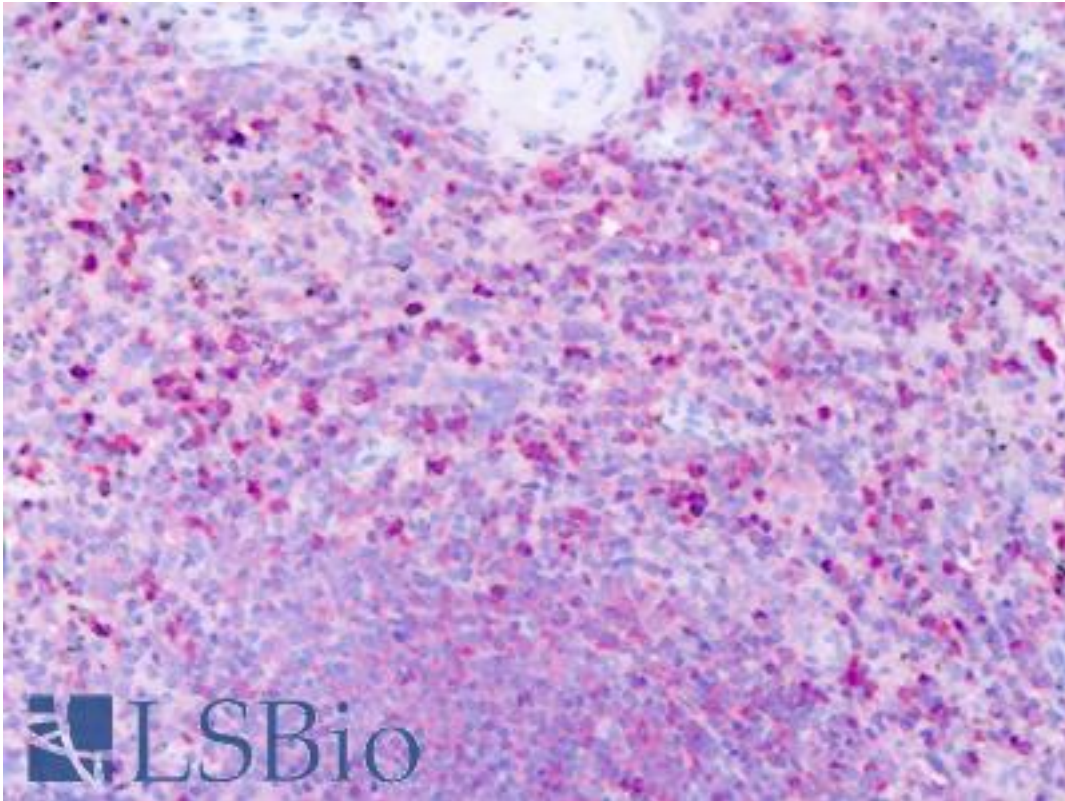


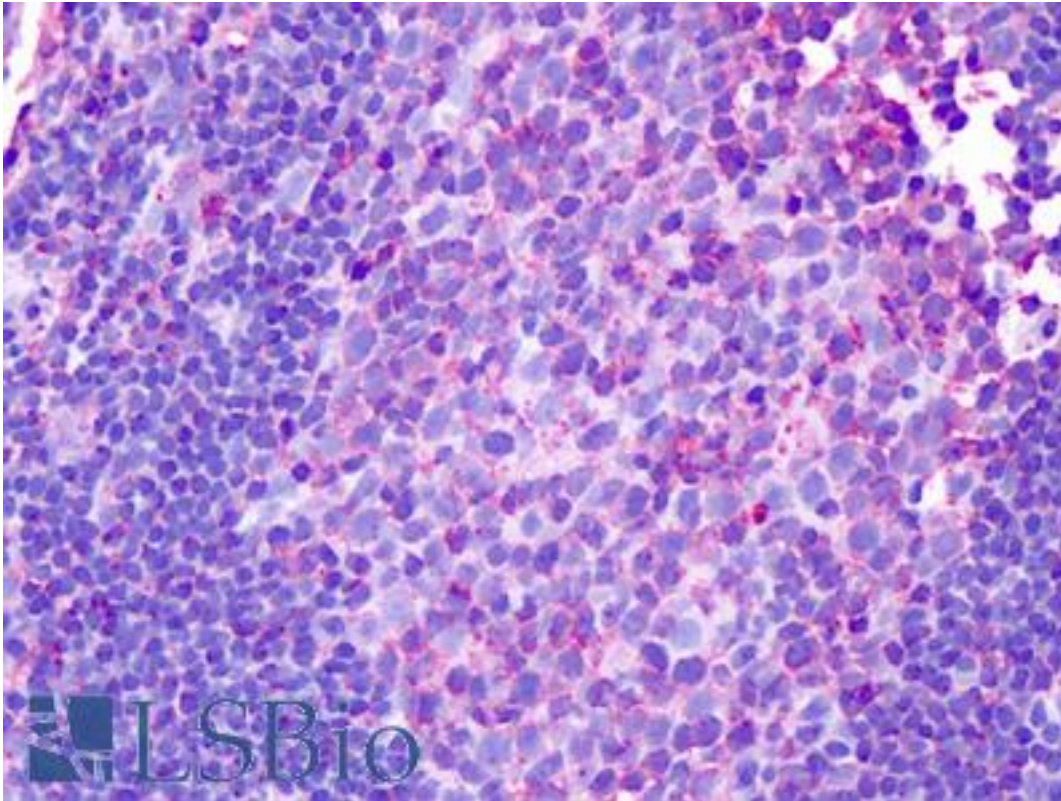
| HRH1 / Histamine H1 Receptor Rabbit anti-Human Polyclonal (Cytoplasmic Domain) Antibody - LS-A1170 - LSBio |  |
|--|--|
| <b>CatalogID:</b>  | LS-A1170   |
| <b>Target:</b>   | histamine receptor H1 (HRH1)   |
| <b>Synonyms:</b>   | HRH1 Antibody, H1 histamine receptor Antibody, H1 receptor Antibody, Histamine 1 receptor Antibody, Histamine H1 receptor Antibody, H1-R Antibody, H1R Antibody, Histamine H(1) receptor Antibody, Histamine receptor H1 Antibody, HisH1 Antibody  |
| <b>Family / Subfamily:</b>   | GPCR / Histamine   |
| <b>Host</b>  | HRH1 antibody was produced in Rabbit   |
| <b>Clonality:</b>  | Polyclonal   |
| <b>Immunogen Species:</b>  | HRH1 / Histamine H1 Receptor antibody was raised against Human   |
| <b>Antigen Type:</b>   | Synthetic peptide  |
| <b>Immunogen:</b>  | HRH1 / Histamine H1 Receptor antibody was raised against synthetic 19 amino acid peptide from 3rd cytoplasmic domain of human HRH1 / Histamine H1 Receptor. Percent identity with other species by BLAST analysis: Human (100%); Chimpanzee, Gorilla (95%); Orangutan, Gibbon, Monkey, Marmoset (89%). |
| <b>Specificity:</b>  | Human HRH1 / Histamine H1 Receptor. BLAST analysis of the peptide immunogen showed no homology with other human proteins.  |
| <b>Epitope:</b>  | Cytoplasmic Domain   |
| <b>Reactivity:</b>   | Human  |
| <b>Predicted Reactivity:</b>   | Chimpanzee, Gorilla  |
| <b>Purification:</b>   | Immunoaffinity purified  |
| <b>Presentation:</b>   | PBS, 0.1% sodium azide.  |
| <b>Recommended Storage:</b>  | Long term: -70°C; Short term: +4°C   |
| <b>Uses:</b>   | IHC - Paraffin (4 µg/ml) (Optimal dilution to be determined by the researcher)   |
| <b>Size:</b>   | 50 µg  |
| <b>Concentration:</b>  | 1 mg/ml  |

**Immunohistochemistry Image:**



Anti-HRH1 / H1 Receptor antibody IHC of human spleen. Immunohistochemistry of formalin-fixed, paraffin-embedded tissue after heat-induced antigen retrieval. Antibody LS-A1170 dilution 4 ug/ml.

**Immunohistochemistry Image:**



Anti-HRH1 / H1 Receptor antibody IHC of human tonsil. Immunohistochemistry of formalin-fixed, paraffin-embedded tissue after heat-induced antigen retrieval. Antibody LS-A1170 dilution 4 ug/ml.

**Requested From:**

Japan

Laboratory Reagent For In Vitro Research Use Only

Not for resale without prior written consent from LifeSpan BioSciences, Inc.

Created on 9/23/2014

© 2014 LifeSpan BioSciences