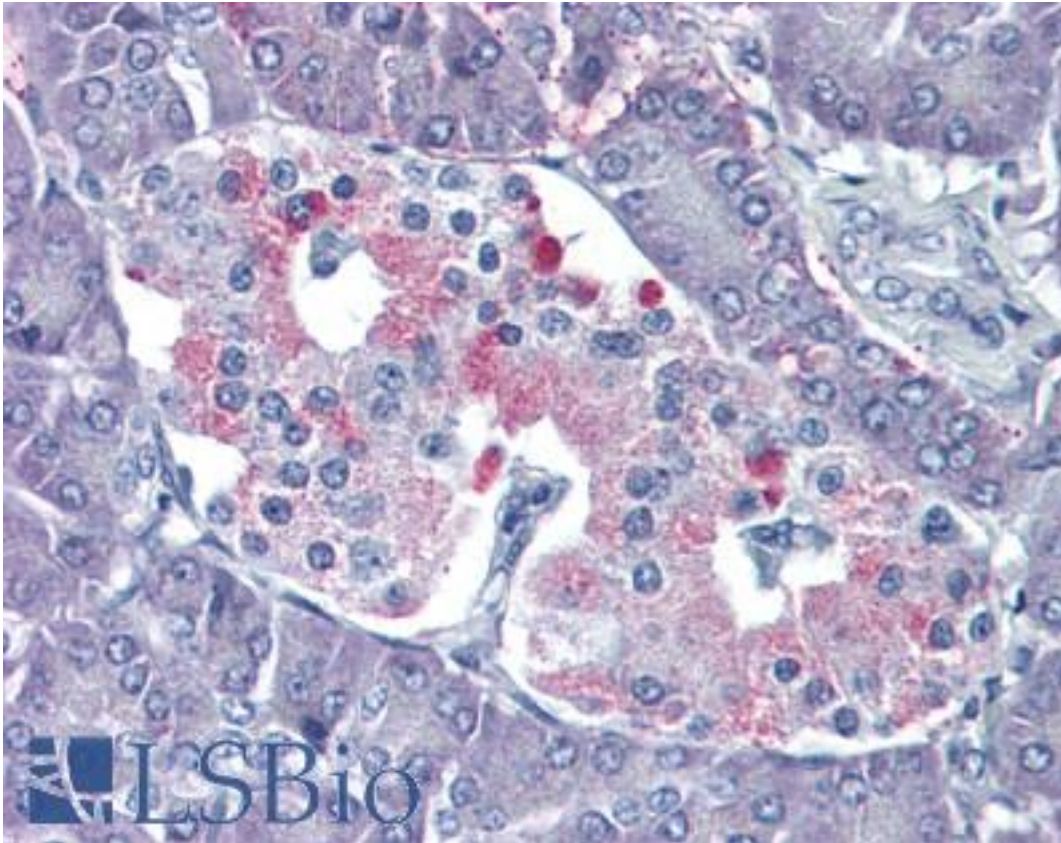


**P2RY4 / P2Y4 Rabbit anti-Human Polyclonal (Internal) Antibody - LS-A1145 - LSBio**

<b>CatalogID:</b>	LS-A1145
<b>Target:</b>	pyrimidinerbic receptor P2Y, G-protein coupled, 4 (P2RY4)
<b>Synonyms:</b>	P2RY4 Antibody, p2Y4 Antibody, p2P Antibody, p2Y purinoceptor 4 Antibody, Pyrimidinerbic receptor p2ry4 Antibody, NRU Antibody, Uridine nucleotide receptor Antibody, p2RY4 Antibody, UNR Antibody
<b>Family / Subfamily:</b>	GPCR / Purinerbic
<b>Host</b>	P2RY4 antibody was produced in Rabbit
<b>Clonality:</b>	Polyclonal
<b>Immunogen Species:</b>	P2RY4 / P2Y4 antibody was raised against Human
<b>Antigen Type:</b>	Synthetic peptide
<b>Immunogen:</b>	P2RY4 / P2Y4 antibody was raised against synthetic 16 amino acid peptide from internal region of human P2RY4 / P2Y4. Percent identity with other species by BLAST analysis: Human, Gorilla (100%); Monkey, Panda, Rabbit (94%); Bovine, Opossum (88%); Mouse, Rat, Bat, Pig (81%).
<b>Specificity:</b>	Human P2RY4 / P2Y4. BLAST analysis of the peptide immunogen showed no homology with other human proteins.
<b>Epitope:</b>	Internal
<b>Reactivity:</b>	Human, Gorilla
<b>Predicted Reactivity:</b>	Monkey, Rabbit
<b>Purification:</b>	Immunoaffinity purified
<b>Presentation:</b>	PBS, 0.1% sodium azide.
<b>Recommended Storage:</b>	Long term: -70°C; Short term: +4°C
<b>Usage Summary:</b>	Immunohistochemistry: LS-A1145 was validated for use in immunohistochemistry on a panel of 21 formalin-fixed, paraffin-embedded (FFPE) human tissues after proteinase K antigen retrieval. After incubation with the primary antibody, slides were incubated with biotinylated secondary antibody, followed by alkaline phosphatase-streptavidin and chromogen. The stained slides were evaluated by a pathologist to confirm staining specificity. The optimal working concentration for LS-A1145 was determined to be 10 ug/ml.
<b>Uses:</b>	IHC - Paraffin (10 µg/ml) (Optimal dilution to be determined by the researcher)
<b>Size:</b>	50 µg
<b>Concentration:</b>	1 mg/ml

**Immunohistochemistry Image:**



Anti-P2RY4 / P2Y4 antibody LS-A1145 IHC of human pancreas. Immunohistochemistry of formalin-fixed, paraffin-embedded tissue after heat-induced antigen retrieval.

**Requested From:**

Japan

Laboratory Reagent For In Vitro Research Use Only

Not for resale without prior written consent from LifeSpan BioSciences, Inc.

Created on 9/23/2014

© 2014 LifeSpan BioSciences