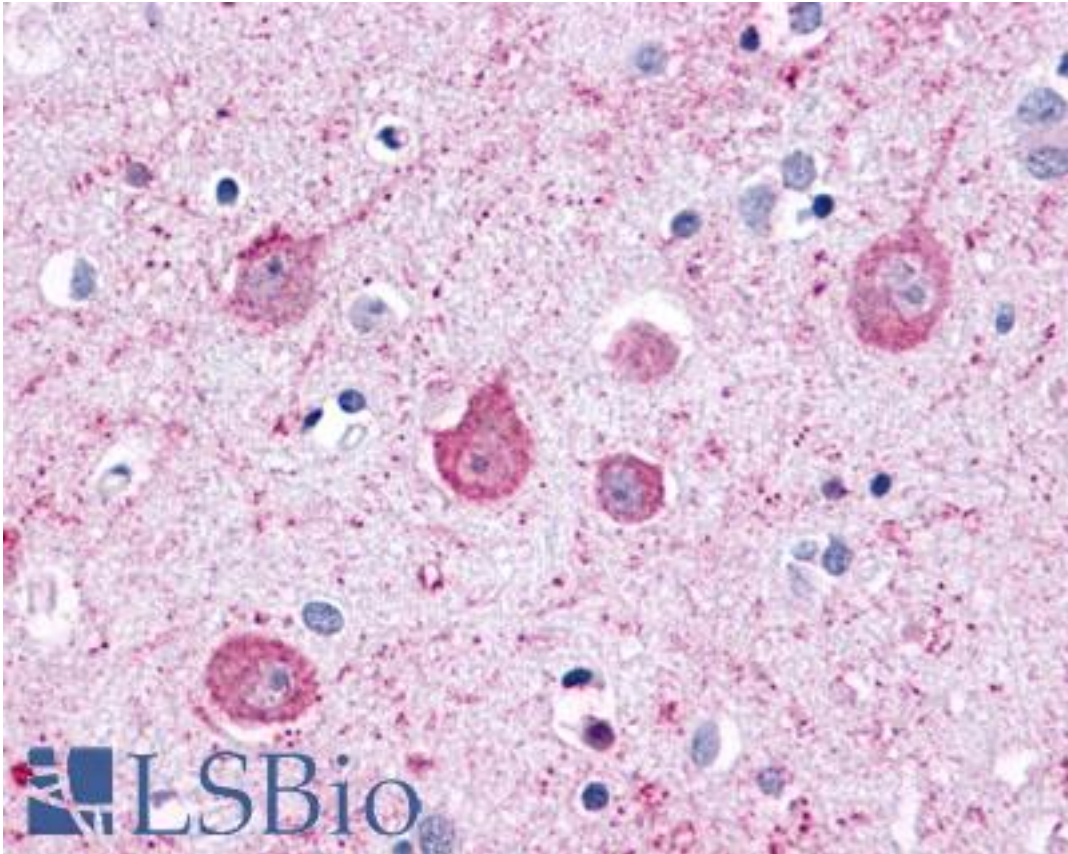


LPHN2 / Latrophilin-2 Rabbit anti-Human Polyclonal (C-Terminus) Antibody - LS-A1136 - LSBio	
CatalogID:	LS-A1136
Target:	latrophilin 2 (LPHN2)
Synonyms:	LPHN2 Antibody, Cl2aa Antibody, CIRL2 Antibody, CL2 Antibody, Latrophilin 1 Antibody, Latrophilin-2 Antibody, Lectomedin-1 Antibody, Latrophilin 2 Antibody, Latrophilin homolog 2 (cow) Antibody, KIAA0786 Antibody, Beta-latrotoxin receptor Antibody, CIRL-2 Antibody, Latrophilin homolog 1 Antibody, Latrotoxin receptor 2 Antibody, Latrotoxin receptor homolog 2 Antibody, LEC1 Antibody, LPHH1 Antibody
Family / Subfamily:	GPCR / Orphan-B
Host	LPHN2 antibody was produced in Rabbit
Clonality:	Polyclonal
Immunogen Species:	LPHN2 / Latrophilin-2 antibody was raised against Human
Antigen Type:	Synthetic peptide
Immunogen:	LPHN2 / Latrophilin-2 antibody was raised against synthetic 16 amino acid peptide from C-terminus of human LPHN2. Percent identity with other species by BLAST analysis: Human, Gorilla, Gibbon, Monkey (100%); Marmoset, Mouse, Rat, Elephant, Horse, Rabbit, Opossum, Turkey, Platypus (94%); Bat, Bovine, Hamster, Panda, Pig, Xenopus (88%); Dog (81%).
Specificity:	Human LPHN2. BLAST analysis of the peptide immunogen showed no homology with other human proteins.
Epitope:	C-Terminus
Reactivity:	Human, Gorilla, Gibbon
Predicted Reactivity:	Monkey, Mouse, Rat, Horse, Rabbit
Purification:	Immunoaffinity purified
Presentation:	PBS, 0.1% sodium azide.
Recommended Storage:	Long term: -70°C; Short term: +4°C
Uses:	IHC - Paraffin (14 µg/ml) (Optimal dilution to be determined by the researcher)
Size:	50 µg
Concentration:	1 mg/ml

Immunohistochemistry Image:



Anti-LPHN2 antibody LS-A1136 IHC of human brain, neurons and glia.
Immunohistochemistry of formalin-fixed, paraffin-embedded tissue after heat-induced antigen retrieval.

Requested From:

Japan

Laboratory Reagent For In Vitro Research Use Only

Not for resale without prior written consent from LifeSpan BioSciences, Inc.

Created on 9/23/2014

© 2014 LifeSpan BioSciences