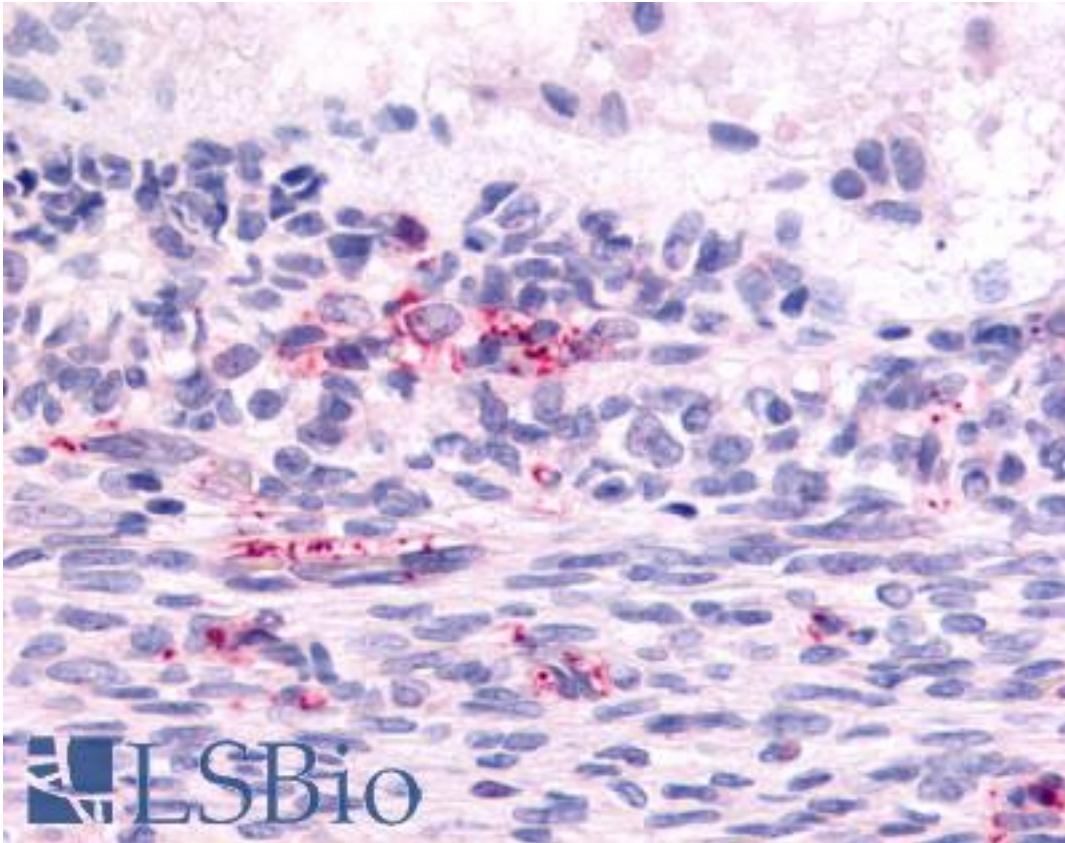


LPHN2 / Latrophilin-2 Rabbit anti-Human Polyclonal (N-Terminus) Antibody - LS-A1133 - LSBio	
<b>CatalogID:</b>	LS-A1133
<b>Target:</b>	latrophilin 2 (LPHN2)
<b>Synonyms:</b>	LPHN2 Antibody, Cl2aa Antibody, CIRL2 Antibody, CL2 Antibody, Latrophilin 1 Antibody, Latrophilin-2 Antibody, Lectomedin-1 Antibody, Latrophilin 2 Antibody, Latrophilin homolog 2 (cow) Antibody, KIAA0786 Antibody, Beta-latrotoxin receptor Antibody, CIRL-2 Antibody, Latrophilin homolog 1 Antibody, Latrotoxin receptor 2 Antibody, Latrotoxin receptor homolog 2 Antibody, LEC1 Antibody, LPHH1 Antibody
<b>Family / Subfamily:</b>	GPCR / Orphan-B
<b>Host</b>	LPHN2 antibody was produced in Rabbit
<b>Clonality:</b>	Polyclonal
<b>Immunogen Species:</b>	LPHN2 / Latrophilin-2 antibody was raised against Human
<b>Antigen Type:</b>	Synthetic peptide
<b>Immunogen:</b>	LPHN2 / Latrophilin-2 antibody was raised against synthetic 16 amino acid peptide from N-terminal extracellular domain of human LPHN2. Percent identity with other species by BLAST analysis: Human, Gorilla, Gibbon, Monkey, Mouse, Rat, Dog, Bat, Bovine, Elephant, Panda, Horse, Rabbit, Pig, Opossum, Platypus (100%); Marmoset, Chicken, Xenopus, Pufferfish (94%).
<b>Specificity:</b>	Human LPHN2. BLAST analysis of the peptide immunogen showed no homology with other human proteins.
<b>Epitope:</b>	N-Terminus
<b>Reactivity:</b>	Human, Gorilla, Gibbon, Mouse, Rat, Bat, Bovine, Dog, Horse, Pig, Rabbit
<b>Predicted Reactivity:</b>	Monkey, Chicken, Xenopus
<b>Purification:</b>	Immunoaffinity purified
<b>Presentation:</b>	PBS, 0.1% sodium azide.
<b>Recommended Storage:</b>	Long term: -70°C; Short term: +4°C
<b>Uses:</b>	IHC - Paraffin (7 µg/ml) (Optimal dilution to be determined by the researcher)
<b>Size:</b>	50 µg
<b>Concentration:</b>	1 mg/ml

**Immunohistochemistry Image:**



Anti-LPHN2 antibody LS-A1133 IHC of human ovary, Graafian follicle. Immunohistochemistry of formalin-fixed, paraffin-embedded tissue after heat-induced antigen retrieval.

**Requested From:**

Japan

Laboratory Reagent For In Vitro Research Use Only

Not for resale without prior written consent from LifeSpan BioSciences, Inc.

Created on 9/23/2014

© 2014 LifeSpan BioSciences