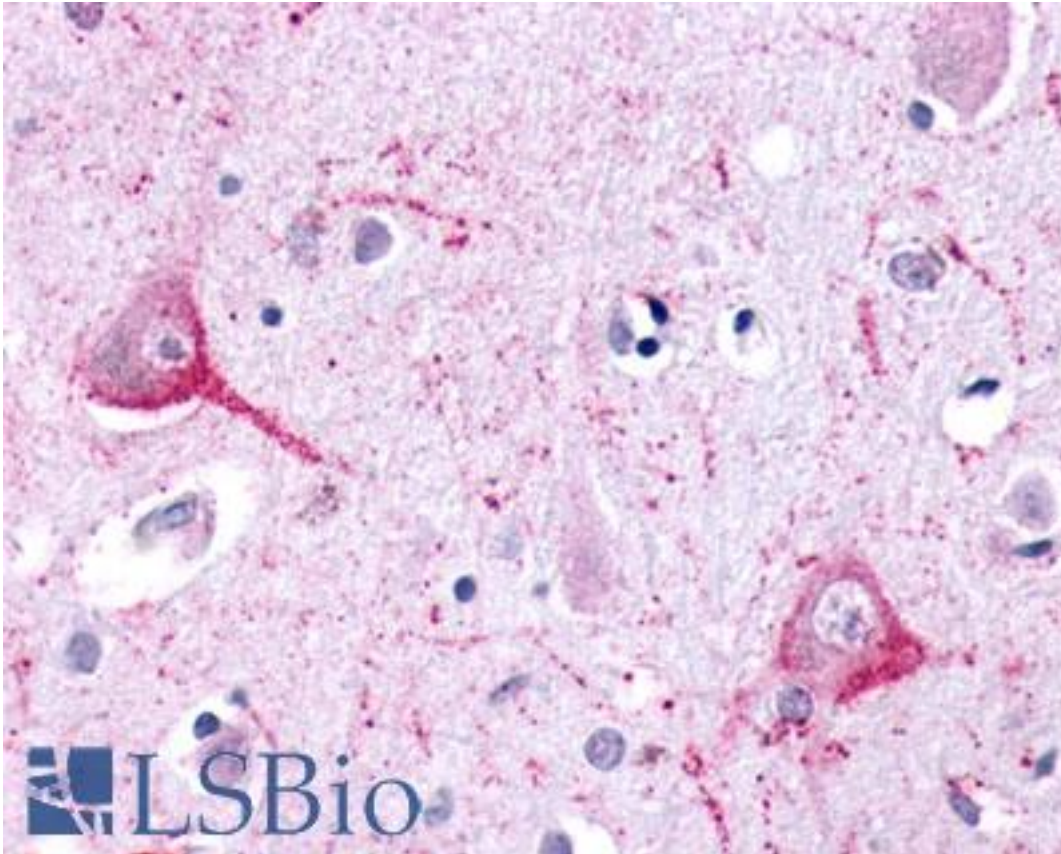


LPHN2 / Latrophilin-2 Rabbit anti-Human Polyclonal (N-Terminus) Antibody - LS-A1132 - LSBio	
CatalogID:	LS-A1132
Target:	latrophilin 2 (LPHN2)
Synonyms:	LPHN2 Antibody, Cl2aa Antibody, CIRL2 Antibody, CL2 Antibody, Latrophilin 1 Antibody, Latrophilin-2 Antibody, Lectomedin-1 Antibody, Latrophilin 2 Antibody, Latrophilin homolog 2 (cow) Antibody, KIAA0786 Antibody, Beta-latrotoxin receptor Antibody, CIRL-2 Antibody, Latrophilin homolog 1 Antibody, Latrotoxin receptor 2 Antibody, Latrotoxin receptor homolog 2 Antibody, LEC1 Antibody, LPHH1 Antibody
Family / Subfamily:	GPCR / Orphan-B
Host	LPHN2 antibody was produced in Rabbit
Clonality:	Polyclonal
Immunogen Species:	LPHN2 / Latrophilin-2 antibody was raised against Human
Antigen Type:	Synthetic peptide
Immunogen:	LPHN2 / Latrophilin-2 antibody was raised against synthetic 16 amino acid peptide from N-terminal extracellular domain of human LPHN2. Percent identity with other species by BLAST analysis: Human, Gibbon, Monkey (100%); Gorilla, Marmoset, Mouse (94%); Rat, Dog, Panda (88%); Bovine, Horse, Rabbit, Pig (81%).
Specificity:	Human LPHN2. BLAST analysis of the peptide immunogen showed no homology with other human proteins.
Epitope:	N-Terminus
Reactivity:	Human, Gibbon
Predicted Reactivity:	Gorilla, Monkey, Mouse
Purification:	Immunoaffinity purified
Presentation:	PBS, 0.1% sodium azide.
Recommended Storage:	Long term: -70°C; Short term: +4°C
Uses:	IHC - Paraffin (18 - 45 µg/ml) (Optimal dilution to be determined by the researcher)
Size:	50 µg
Concentration:	1 mg/ml

Immunohistochemistry Image:



Anti-LPHN2 antibody LS-A1132 IHC of human brain, neurons and glia.
Immunohistochemistry of formalin-fixed, paraffin-embedded tissue after heat-induced antigen retrieval.

Requested From:

Japan

Laboratory Reagent For In Vitro Research Use Only

Not for resale without prior written consent from LifeSpan BioSciences, Inc.

Created on 9/23/2014

© 2014 LifeSpan BioSciences