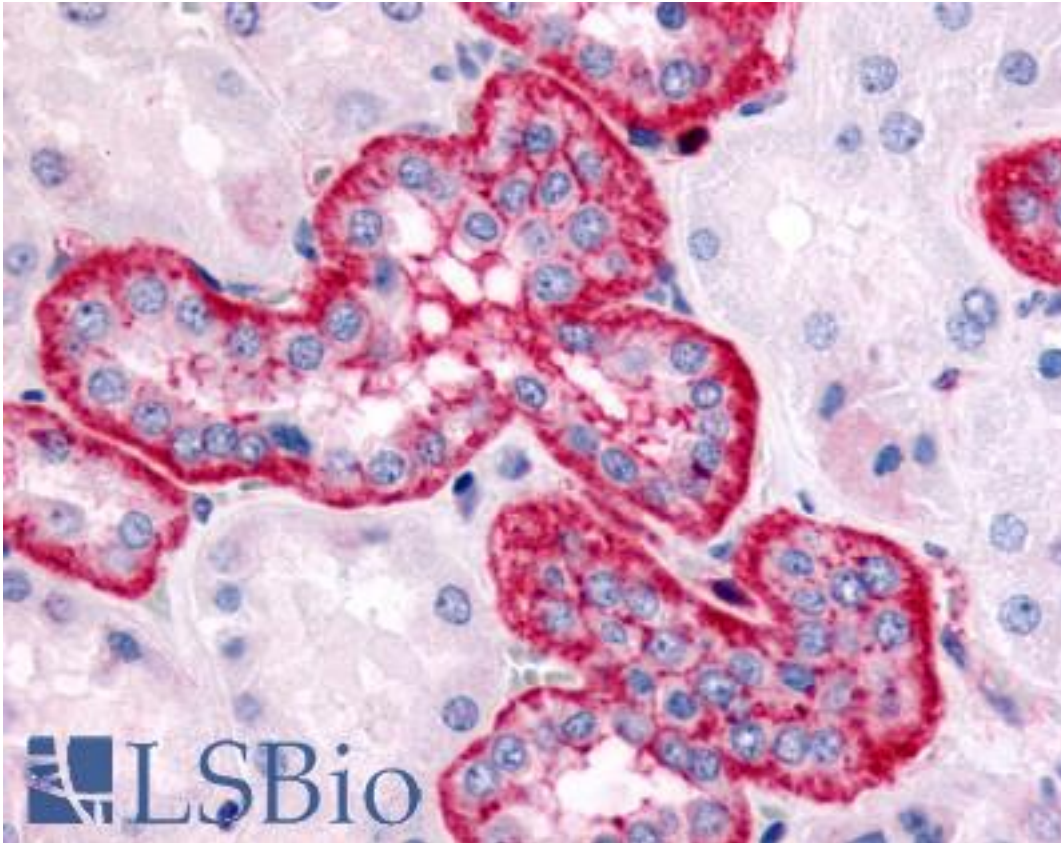


HTR2C / 5-HT2C Receptor Rabbit anti-Human Polyclonal (C-Terminus) Antibody - LS-A1119 - LSBio

CatalogID:	LS-A1119
Target:	5-hydroxytryptamine (serotonin) receptor 2C, G protein-coupled (HTR2C)
Synonyms:	HTR2C Antibody, 5-HT-1C Antibody, 5-HT1c receptor Antibody, 5HT-1C Antibody, 5-HT2C Antibody, 5-HT2c receptor Antibody, 5HT2C Receptor Antibody, 5-HT-2C Antibody, 5-HT1C Antibody, 5-HTR2C Antibody, HTR1C Antibody, Serotonin 5-HT-1c receptor Antibody, Serotonin receptor 2C Antibody, Serotonin 1c receptor Antibody, Serotonin 5-HT-2C receptor Antibody, Serotonin 2c receptor Antibody
Family / Subfamily:	GPCR / Serotonin
Host	HTR2C antibody was produced in Rabbit
Clonality:	Polyclonal
Immunogen Species:	HTR2C / 5-HT2C Receptor antibody was raised against Human
Antigen Type:	Synthetic peptide
Immunogen:	HTR2C / 5-HT2C Receptor antibody was raised against synthetic 16 amino acid peptide from C-terminus of human 5HT2C Receptor. Percent identity with other species by BLAST analysis: Human, Chimpanzee (100%); Gorilla, Orangutan, Monkey, Panda (94%); Gibbon, Pig (88%); Elephant, Rabbit, Horse (81%).
Specificity:	Human 5HT2C Receptor. BLAST analysis of the peptide immunogen showed no homology with other human proteins.
Epitope:	C-Terminus
Reactivity:	Human, Chimpanzee
Predicted Reactivity:	Gorilla, Orangutan, Monkey
Purification:	Immunoaffinity purified
Presentation:	PBS, 0.1% sodium azide.
Recommended Storage:	Long term: -70°C; Short term: +4°C
Uses:	IHC - Paraffin (3.8 µg/ml) (Optimal dilution to be determined by the researcher)
Size:	50 µg
Concentration:	1 mg/ml

Immunohistochemistry Image:



Anti-5HT2C Receptor antibody LS-A1119 IHC of human kidney, renal tubules.
Immunohistochemistry of formalin-fixed, paraffin-embedded tissue after heat-induced antigen retrieval.

Requested From:

Japan

Laboratory Reagent For In Vitro Research Use Only

Not for resale without prior written consent from LifeSpan BioSciences, Inc.

Created on 9/23/2014

© 2014 LifeSpan BioSciences