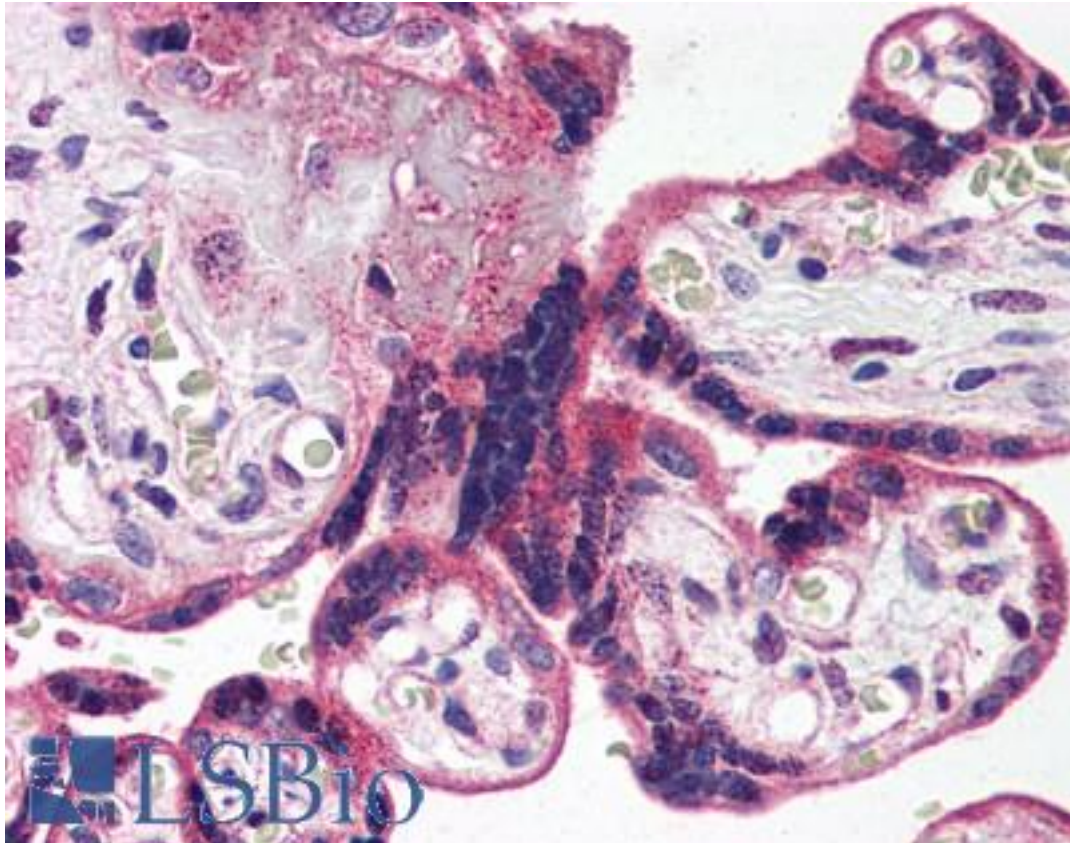


HTR2A / 5-HT2A Receptor Rabbit anti-Human Polyclonal (C-Terminus) Antibody - LS-A1109 - LSBio

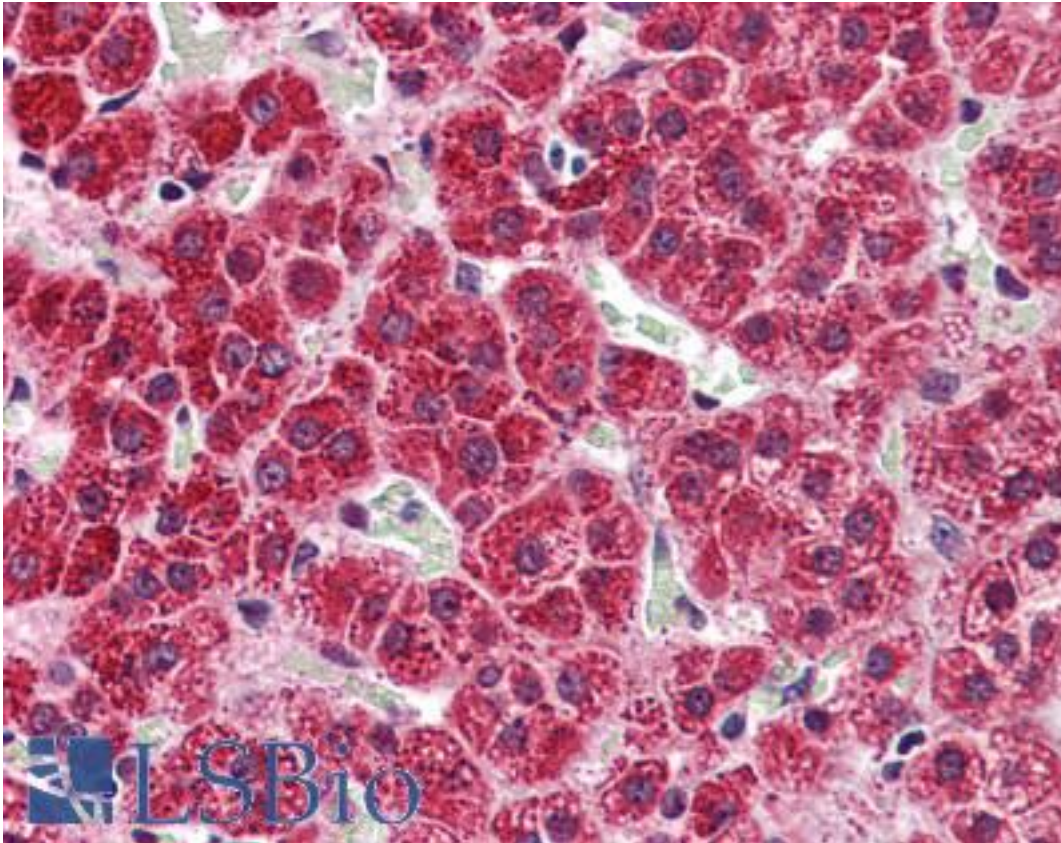
CatalogID:	LS-A1109
Target:	5-hydroxytryptamine (serotonin) receptor 2A, G protein-coupled (HTR2A)
Synonyms:	HTR2A Antibody, 5-HT2A Antibody, 5-HT-2A Antibody, 5-HT2a receptor Antibody, 5HT2A Receptor Antibody, 5-HT-2 Antibody, 5-HT2A/2C Antibody, 5-HT2A/2C receptor Antibody, 5-HT2 receptor Antibody, HTR2 Antibody, Serotonin 5-HT-2A receptor Antibody, Serotonin receptor 2A Antibody, Serotonin 2a receptor Antibody
Family / Subfamily:	GPCR / Serotonin
Host	HTR2A antibody was produced in Rabbit
Clonality:	Polyclonal
Immunogen Species:	HTR2A / 5-HT2A Receptor antibody was raised against Human
Antigen Type:	Synthetic peptide
Immunogen:	HTR2A / 5-HT2A Receptor antibody was raised against synthetic 20 amino acid peptide from C-terminal cytoplasmic domain human 5HT2A Receptor. Percent identity with other species by BLAST analysis: Human, Chimpanzee, Gorilla (100%); Orangutan, Gibbon, Monkey (95%); Marmoset (85%).
Specificity:	Human 5HT2A Receptor. BLAST analysis of the peptide immunogen showed no homology with other human proteins.
Epitope:	C-Terminus
Reactivity:	Human, Chimpanzee, Gorilla
Predicted Reactivity:	Orangutan, Gibbon, Monkey
Purification:	Immunoaffinity purified
Presentation:	PBS, 0.1% sodium azide.
Recommended Storage:	Long term: -70°C; Short term: +4°C
Usage Summary:	Antigen retrieval requires Proteinase K treatment.
Uses:	IHC - Paraffin (10 µg/ml) (Optimal dilution to be determined by the researcher)
Size:	50 µg
Concentration:	1 mg/ml

Immunohistochemistry Image:



Anti-5HT2A Receptor antibody LS-A1109 IHC of human placenta. Immunohistochemistry of formalin-fixed, paraffin-embedded tissue after heat-induced antigen retrieval.

Immunohistochemistry Image:



Anti-5HT2A Receptor antibody LS-A1109 IHC of human adrenal. Immunohistochemistry of formalin-fixed, paraffin-embedded tissue after heat-induced antigen retrieval.

Requested From:

Japan

Laboratory Reagent For In Vitro Research Use Only

Not for resale without prior written consent from LifeSpan BioSciences, Inc.

Created on 9/23/2014

© 2014 LifeSpan BioSciences