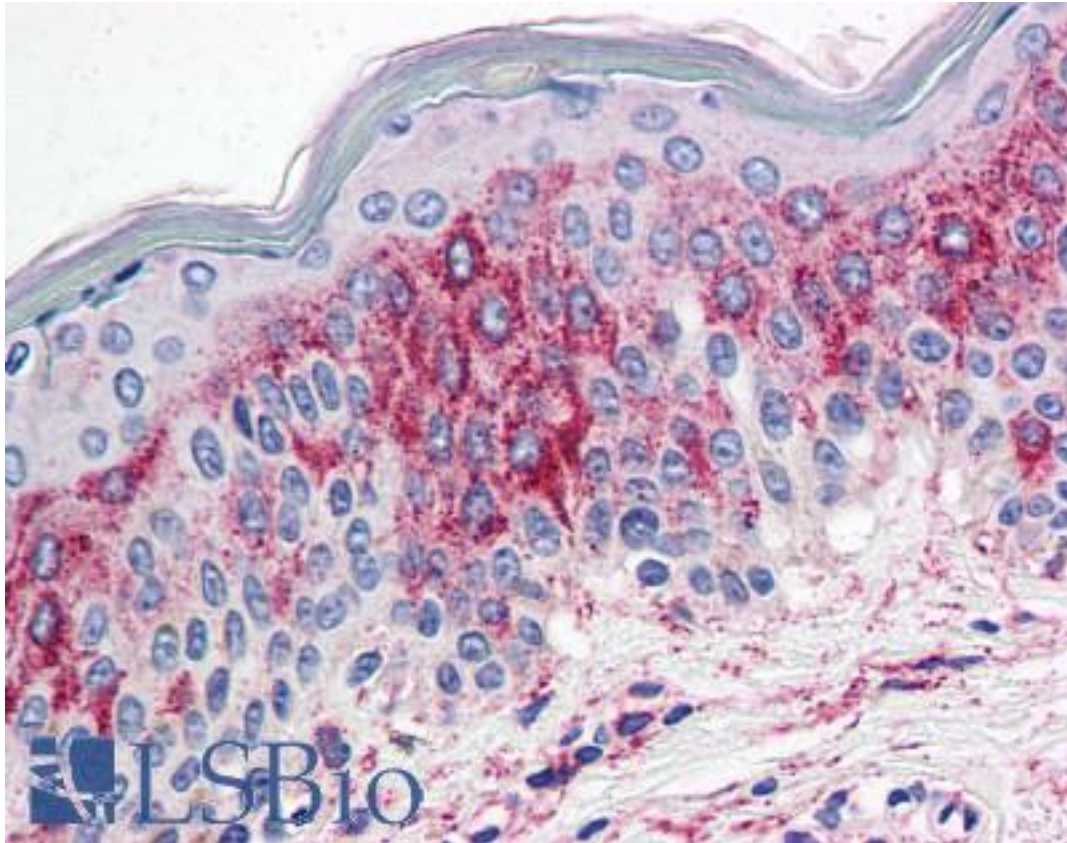


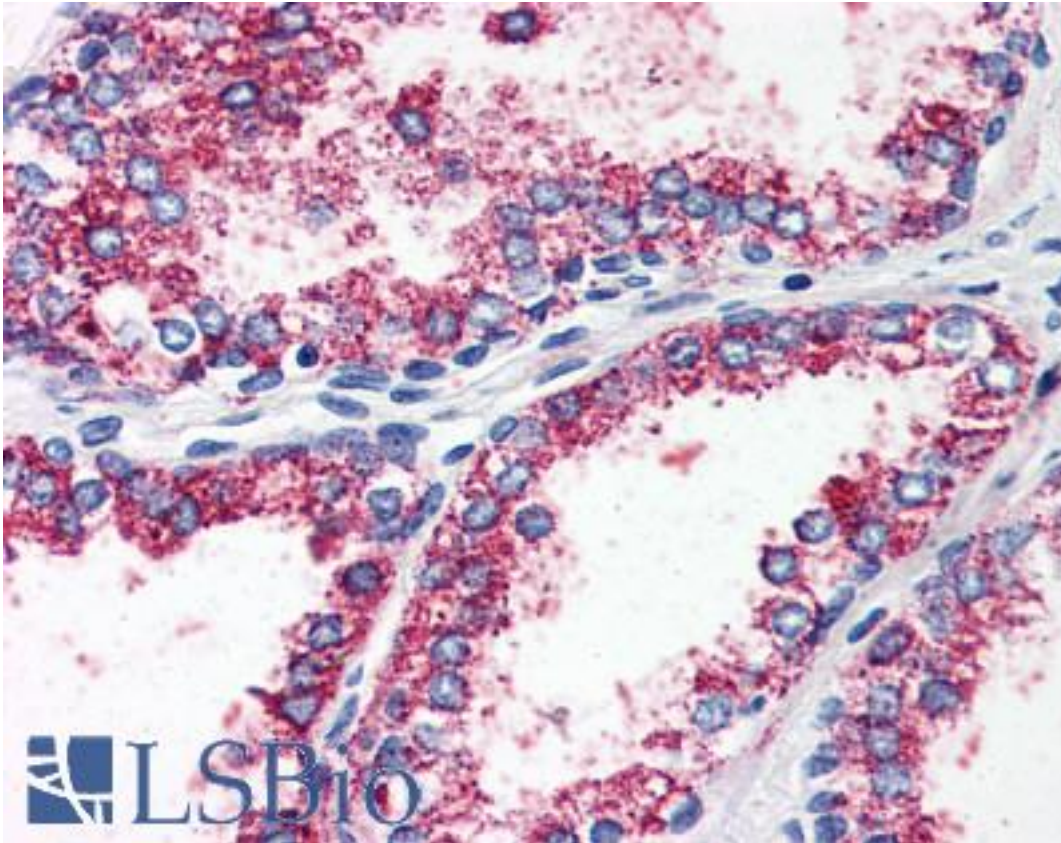
HTR2A / 5-HT2A Receptor Rabbit anti-Human Polyclonal (N-Terminus) Antibody - LS-A1106 - LSBio	
<b>CatalogID:</b>	LS-A1106
<b>Target:</b>	5-hydroxytryptamine (serotonin) receptor 2A, G protein-coupled (HTR2A)
<b>Synonyms:</b>	HTR2A Antibody, 5-HT2A Antibody, 5-HT-2A Antibody, 5-HT2a receptor Antibody, 5HT2A Receptor Antibody, 5-HT-2 Antibody, 5-HT2A/2C Antibody, 5-HT2A/2C receptor Antibody, 5-HT2 receptor Antibody, HTR2 Antibody, Serotonin 5-HT-2A receptor Antibody, Serotonin receptor 2A Antibody, Serotonin 2a receptor Antibody
<b>Family / Subfamily:</b>	GPCR / Serotonin
<b>Host</b>	HTR2A antibody was produced in Rabbit
<b>Clonality:</b>	Polyclonal
<b>Immunogen Species:</b>	HTR2A / 5-HT2A Receptor antibody was raised against Human
<b>Antigen Type:</b>	Synthetic peptide
<b>Immunogen:</b>	HTR2A / 5-HT2A Receptor antibody was raised against synthetic 17 amino acid peptide from N-Terminus of human 5HT2A Receptor. Percent identity with other species by BLAST analysis: Human, Chimpanzee, Gorilla, Orangutan, Gibbon, Monkey, Panda, Horse, Pig, Bat, Elephant (100%); Marmoset, Bovine, Dog (94%); Hamster (82%).
<b>Specificity:</b>	Human 5HT2A Receptor. BLAST analysis of the peptide immunogen showed no homology with other human proteins.
<b>Epitope:</b>	N-Terminus
<b>Reactivity:</b>	Human, Chimpanzee, Gorilla, Orangutan, Gibbon, Bat, Horse, Pig
<b>Predicted Reactivity:</b>	Monkey, Bovine, Dog
<b>Purification:</b>	Immunoaffinity purified
<b>Presentation:</b>	PBS, 0.1% sodium azide.
<b>Recommended Storage:</b>	Short term: +4°C. Long term: aliquot and store at -70°C.
<b>Usage Summary:</b>	Immunohistochemistry with formalin-fixed paraffin-embedded tissues requires pretreatment with Proteinase K.
<b>Uses:</b>	IHC - Paraffin (10 - 12.5 µg/ml) (Optimal dilution to be determined by the researcher)
<b>Size:</b>	50 µg
<b>Concentration:</b>	1 mg/ml

**Immunohistochemistry Image:**



Anti-5HT2A Receptor antibody LS-A1106 IHC of human skin. Immunohistochemistry of formalin-fixed, paraffin-embedded tissue after antigen retrieval with Proteinase K.

**Immunohistochemistry Image:**



Anti-5HT2A Receptor antibody LS-A1106 IHC of human prostate. Immunohistochemistry of formalin-fixed, paraffin-embedded tissue after antigen retrieval with Proteinase K.

**Requested From:**

Japan

Laboratory Reagent For In Vitro Research Use Only

Not for resale without prior written consent from LifeSpan BioSciences, Inc.

Created on 9/23/2014

© 2014 LifeSpan BioSciences