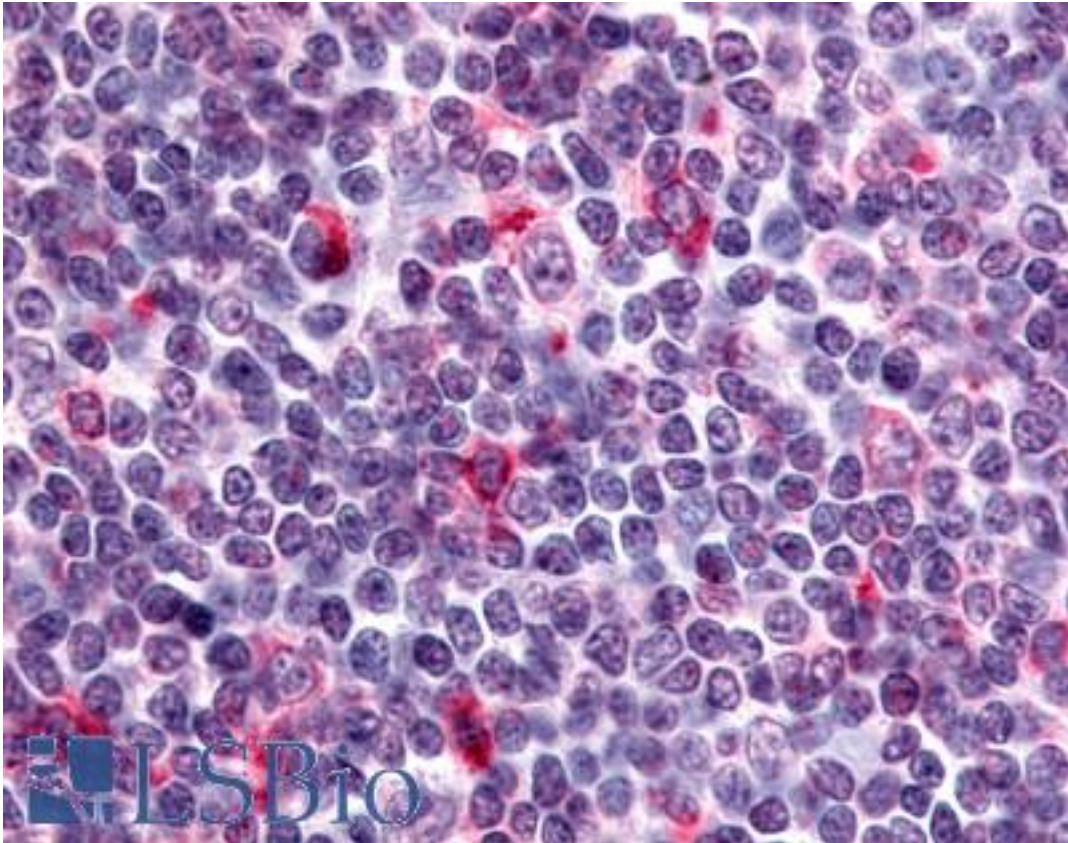


**CXCR6 Rabbit anti-Human Polyclonal (C-Terminus) Antibody - LS-A1105 - LSBio**

<b>CatalogID:</b>	LS-A1105
<b>Target:</b>	chemokine (C-X-C motif) receptor 6 (CXCR6)
<b>Synonyms:</b>	CXCR6 Antibody, CD186 antigen Antibody, CXCR-6 Antibody, STRL33 Antibody, TYMSTR Antibody, BONZO Antibody, CD186 Antibody, CDw186 Antibody, CXCR6 Antibody
<b>Family / Subfamily:</b>	GPCR / Chemokine
<b>Host</b>	CXCR6 antibody was produced in Rabbit
<b>Clonality:</b>	Polyclonal
<b>Immunogen Species:</b>	CXCR6 antibody was raised against Human
<b>Antigen Type:</b>	Synthetic peptide
<b>Immunogen:</b>	CXCR6 antibody was raised against synthetic 16 amino acid peptide from C-terminus of human CXCR6. Percent identity with other species by BLAST analysis: Human, Chimpanzee, Gorilla, Monkey (100%); Marmoset (94%); Mouse, Rat, Hamster, Panda (88%); Rabbit (81%).
<b>Specificity:</b>	Human CXCR6. BLAST analysis of the peptide immunogen showed no homology with other human proteins.
<b>Epitope:</b>	C-Terminus
<b>Reactivity:</b>	Human, Chimpanzee, Gorilla
<b>Predicted Reactivity:</b>	Monkey
<b>Purification:</b>	Immunoaffinity purified
<b>Presentation:</b>	PBS, 0.1% sodium azide.
<b>Recommended Storage:</b>	Long term: -70°C; Short term: +4°C
<b>Uses:</b>	IHC - Paraffin (19 µg/ml) (Optimal dilution to be determined by the researcher)
<b>Size:</b>	50 µg
<b>Concentration:</b>	1 mg/ml

**Immunohistochemistry Image:**



Anti-CXCR6 antibody LS-A1105 IHC of human tonsil, immunoblasts. Immunohistochemistry of formalin-fixed, paraffin-embedded tissue after heat-induced antigen retrieval.

**Requested From:**

Japan

Laboratory Reagent For In Vitro Research Use Only

Not for resale without prior written consent from LifeSpan BioSciences, Inc.

Created on 9/23/2014

© 2014 LifeSpan BioSciences