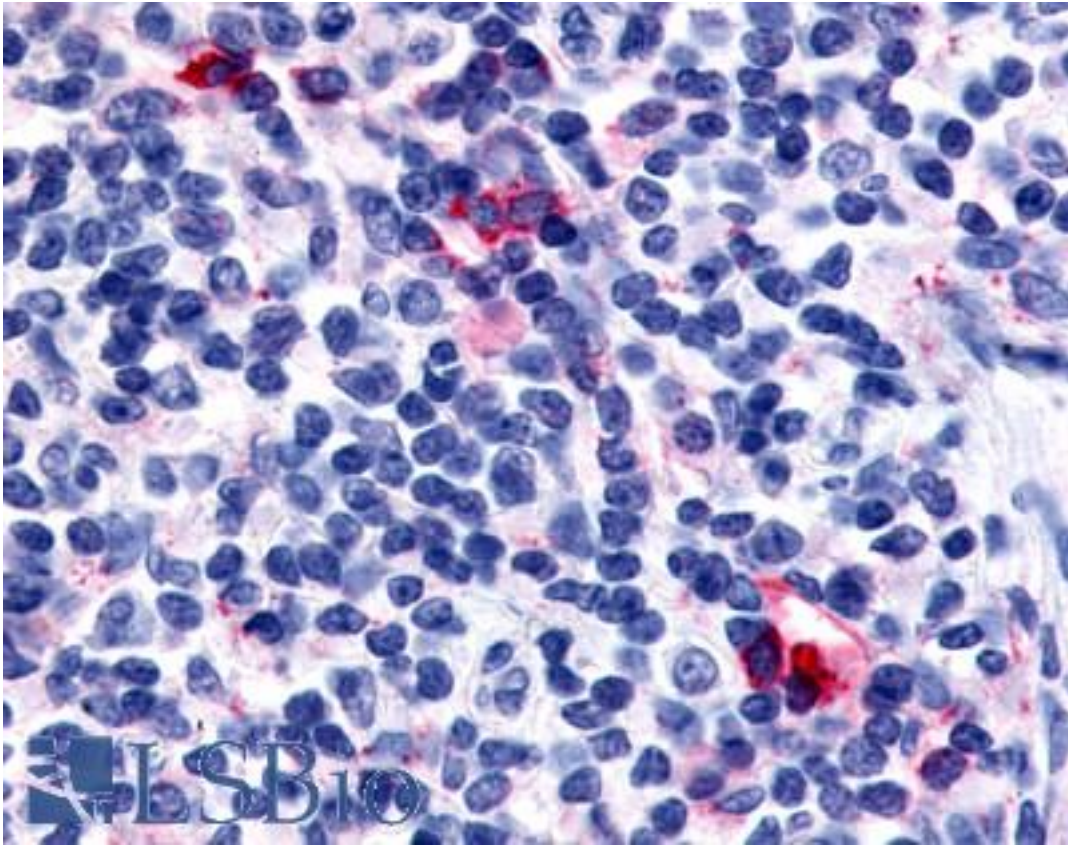


CXCR6 Rabbit anti-Human Polyclonal (C-Terminus) Antibody - LS-A1104 - LSBio	
CatalogID:	LS-A1104
Target:	chemokine (C-X-C motif) receptor 6 (CXCR6)
Synonyms:	CXCR6 Antibody, CD186 antigen Antibody, CXCR-6 Antibody, STRL33 Antibody, TYMSTR Antibody, BONZO Antibody, CD186 Antibody, CDw186 Antibody, CXCR6 Antibody
Family / Subfamily:	GPCR / Chemokine
Host	CXCR6 antibody was produced in Rabbit
Clonality:	Polyclonal
Immunogen Species:	CXCR6 antibody was raised against Human
Antigen Type:	Synthetic peptide
Immunogen:	CXCR6 antibody was raised against synthetic 17 amino acid peptide from C-terminus of human CXCR6. Percent identity with other species by BLAST analysis: Human, Chimpanzee, Gorilla, Orangutan, Monkey, Marmoset (100%); Bat, Elephant, Horse, Pig (94%); Bovine (88%); Mouse, Hamster, Rabbit (82%).
Specificity:	Human CXCR6. BLAST analysis of the peptide immunogen showed no homology with other human proteins.
Epitope:	C-Terminus
Reactivity:	Human, Chimpanzee, Gorilla, Orangutan, Monkey
Predicted Reactivity:	Bat, Horse, Pig
Purification:	Immunoaffinity purified
Presentation:	PBS, 0.1% sodium azide.
Recommended Storage:	Long term: -70°C; Short term: +4°C
Uses:	IHC - Paraffin (16 µg/ml) (Optimal dilution to be determined by the researcher)
Size:	50 µg
Concentration:	1 mg/ml

Immunohistochemistry Image:



Anti-CXCR6 antibody LS-A1104 IHC of human tonsil, interfollicular zone.
Immunohistochemistry of formalin-fixed, paraffin-embedded tissue after heat-induced antigen retrieval.

Requested From:

Japan

Laboratory Reagent For In Vitro Research Use Only

Not for resale without prior written consent from LifeSpan BioSciences, Inc.

Created on 9/23/2014

© 2014 LifeSpan BioSciences