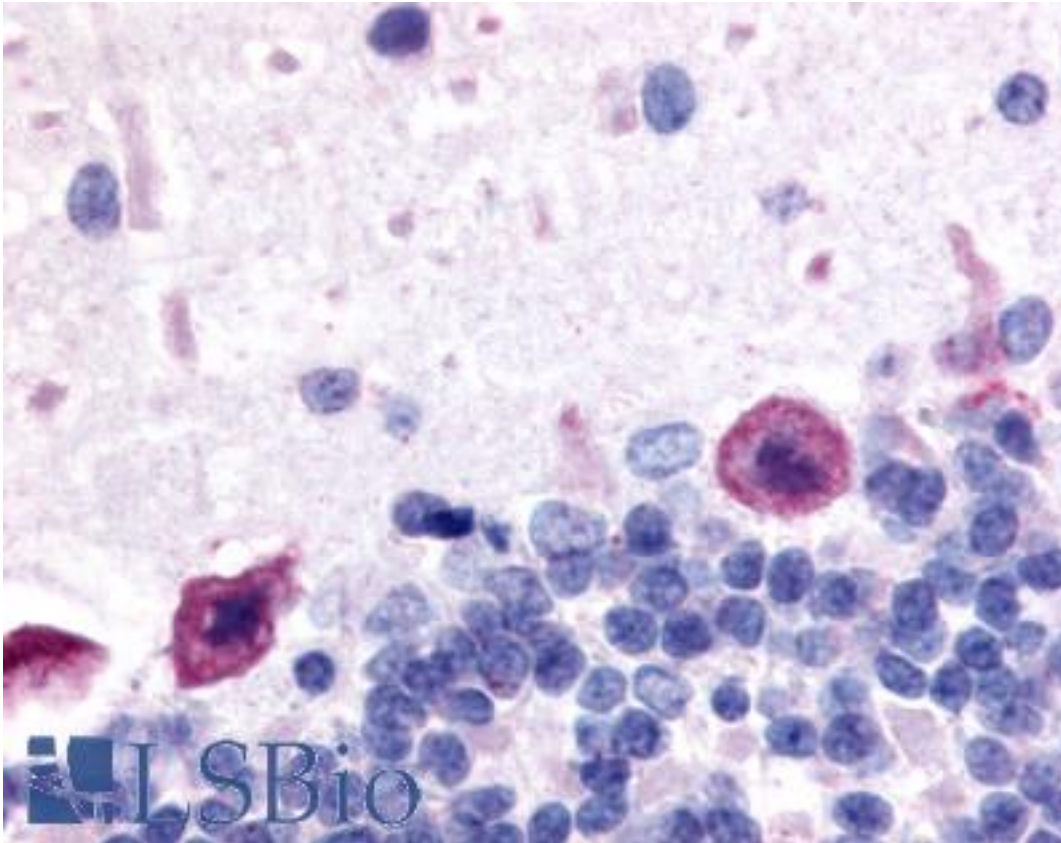


ADORA1 / Adenosine A1 Receptor Rabbit anti-Human Polyclonal (C-Terminus) Antibody - LS-A11 - LSBio	
CatalogID:	LS-A11
Target:	adenosine A1 receptor (ADORA1)
Synonyms:	ADORA1 Antibody, A1 adenosine receptor Antibody, A1ar Antibody, Adenosine A1 receptor Antibody, Adenosine receptor A1 Antibody, ADO-A1 receptor Antibody, RDC7 Antibody
Family / Subfamily:	GPCR / Adenosine
Host	ADORA1 antibody was produced in Rabbit
Clonality:	Polyclonal
Immunogen Species:	ADORA1 / Adenosine A1 Receptor antibody was raised against Human
Antigen Type:	Synthetic peptide
Immunogen:	ADORA1 / Adenosine A1 Receptor antibody was raised against synthetic 20 amino acid peptide from C-terminus of human Adenosine A1 Receptor. Percent identity with other species by BLAST analysis: Human, Gibbon, Monkey (100%); Orangutan, Marmoset, Elephant, Horse (95%); Rat, Pig, Guinea pig (90%); Bovine, Hamster, Panda (85%); Mouse, Dog (80%).
Specificity:	Human Adenosine A1 Receptor. BLAST analysis of the peptide immunogen showed no homology with other human proteins.
Epitope:	C-Terminus
Reactivity:	Human, Gibbon, Rat
Predicted Reactivity:	Orangutan, Monkey, Guinea pig, Horse, Pig
Purification:	Immunoaffinity purified
Presentation:	PBS, 0.1% sodium azide.
Recommended Storage:	Long term: -70°C; Short term: +4°C
Uses:	IHC - Paraffin (7.2 µg/ml) (Optimal dilution to be determined by the researcher)
Size:	50 µg
Concentration:	1 mg/ml

Immunohistochemistry Image:



Anti-Adenosine A1 Receptor antibody LS-A11 IHC of rat brain, Purkinje neurons.
Immunohistochemistry of formalin-fixed, paraffin-embedded tissue after heat-induced antigen retrieval.

Requested From:

Japan

Laboratory Reagent For In Vitro Research Use Only

Not for resale without prior written consent from LifeSpan BioSciences, Inc.

Created on 9/23/2014

© 2014 LifeSpan BioSciences