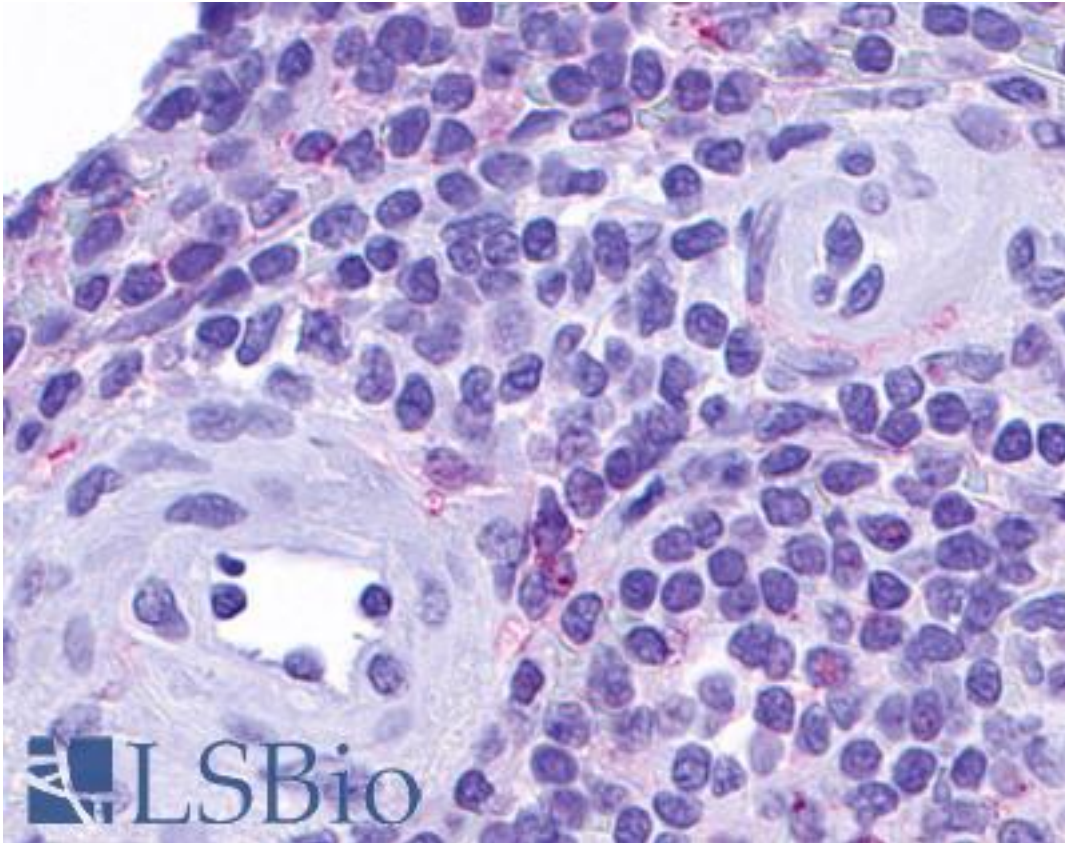


CCRL2 Rabbit anti-Human Polyclonal (Cytoplasmic Domain) Antibody - LS-A1094 - LSBio	
CatalogID:	LS-A1094
Target:	chemokine (C-C motif) receptor-like 2 (CCRL2)
Synonyms:	CCRL2 Antibody, CCR11 Antibody, Chemokine receptor X Antibody, CRAM Antibody, CRAM-A Antibody, CRAM-B Antibody, CKRX Antibody, C-C chemokine receptor-like 2 Antibody, Chemokine receptor CCR11 Antibody, HCR Antibody
Family / Subfamily:	GPCR / Chemokine
Host	CCRL2 antibody was produced in Rabbit
Clonality:	Polyclonal
Immunogen Species:	CCRL2 antibody was raised against Human
Antigen Type:	Synthetic peptide
Immunogen:	CCRL2 antibody was raised against synthetic 20 amino acid peptide from 3rd cytoplasmic domain of human CCRL2. Percent identity with other species by BLAST analysis: Human, Gorilla, Gibbon (100%); Monkey (95%); Marmoset (90%).
Specificity:	Human CCRL2. BLAST analysis of the peptide immunogen showed no homology with other human proteins.
Epitope:	Cytoplasmic Domain
Reactivity:	Human, Gorilla, Gibbon
Predicted Reactivity:	Monkey
Purification:	Immunoaffinity purified
Presentation:	PBS, 0.1% sodium azide.
Recommended Storage:	Long term: -70°C; Short term: +4°C
Uses:	IHC - Paraffin (8 µg/ml) (Optimal dilution to be determined by the researcher)
Size:	50 µg
Concentration:	1 mg/ml

Immunohistochemistry Image:



Anti-CCRL2 antibody LS-A1094 IHC of human spleen. Immunohistochemistry of formalin-fixed, paraffin-embedded tissue after heat-induced antigen retrieval.

Requested From:

Japan

Laboratory Reagent For In Vitro Research Use Only

Not for resale without prior written consent from LifeSpan BioSciences, Inc.

Created on 9/23/2014

© 2014 LifeSpan BioSciences