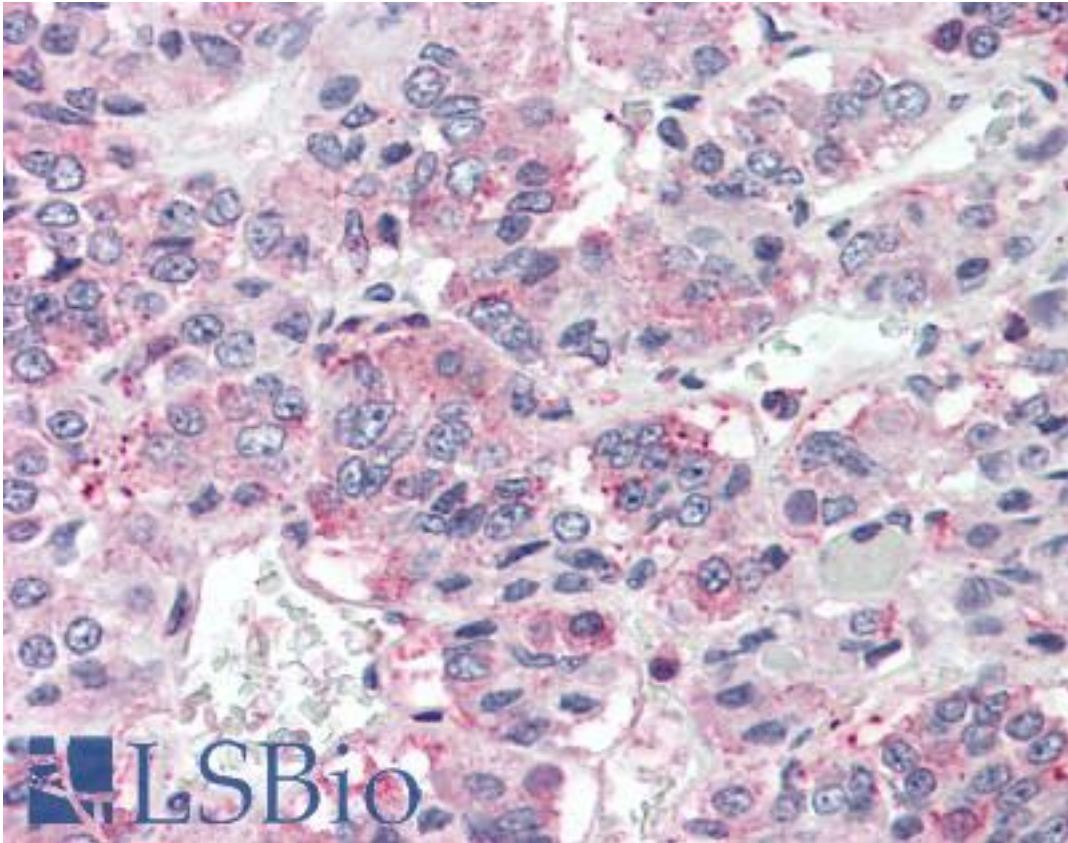


PRLHR / GPR10 Rabbit anti-Human Polyclonal (Extracellular Domain) Antibody - LS-A1088 - LSBio	
CatalogID:	LS-A1088
Target:	prolactin releasing hormone receptor (PRLHR)
Synonyms:	PRLHR Antibody, G protein-coupled receptor 10 Antibody, G-protein coupled receptor 10 Antibody, GPR10 Antibody, GR3 Antibody, HGR3 Antibody, PrRP receptor Antibody, PrRPR Antibody, Uhr-1 Antibody
Family / Subfamily:	GPCR / Releasing hormone
Host	PRLHR antibody was produced in Rabbit
Clonality:	Polyclonal
Immunogen Species:	PRLHR / GPR10 antibody was raised against Human
Antigen Type:	Synthetic peptide
Immunogen:	PRLHR / GPR10 antibody was raised against synthetic 16 amino acid peptide from 2nd extracellular domain of human PRLHR / GPR10. Percent identity with other species by BLAST analysis: Human, Gorilla, Monkey, Marmoset, Dog, Bovine, Horse, Pig (100%); Mouse, Rat, Panda (94%).
Specificity:	Human PRLHR / GPR10. BLAST analysis of the peptide immunogen showed no homology with other human proteins.
Epitope:	Extracellular Domain
Reactivity:	Human, Gorilla, Monkey, Bovine, Dog, Horse, Pig
Predicted Reactivity:	Mouse, Rat
Purification:	Immunoaffinity purified
Presentation:	PBS, 0.1% sodium azide.
Recommended Storage:	Long term: -70°C; Short term: +4°C
Uses:	IHC - Paraffin (5 - 7.5 µg/ml), ELISA (Optimal dilution to be determined by the researcher)
Size:	50 µg
Concentration:	1 mg/ml

Immunohistochemistry Image:



Anti-PRLHR / GPR10 antibody LS-A1088 IHC of human pituitary. Immunohistochemistry of formalin-fixed, paraffin-embedded tissue after heat-induced antigen retrieval.

Requested From:

Japan

Laboratory Reagent For In Vitro Research Use Only

Not for resale without prior written consent from LifeSpan BioSciences, Inc.

Created on 9/23/2014

© 2014 LifeSpan BioSciences