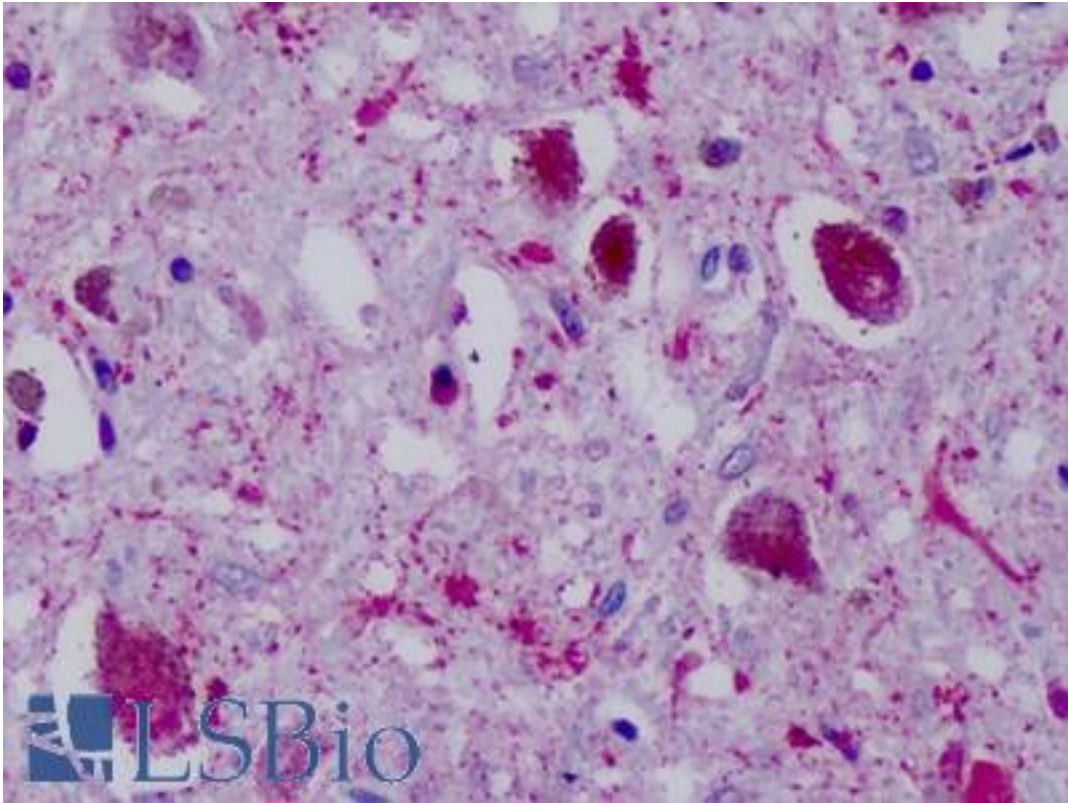


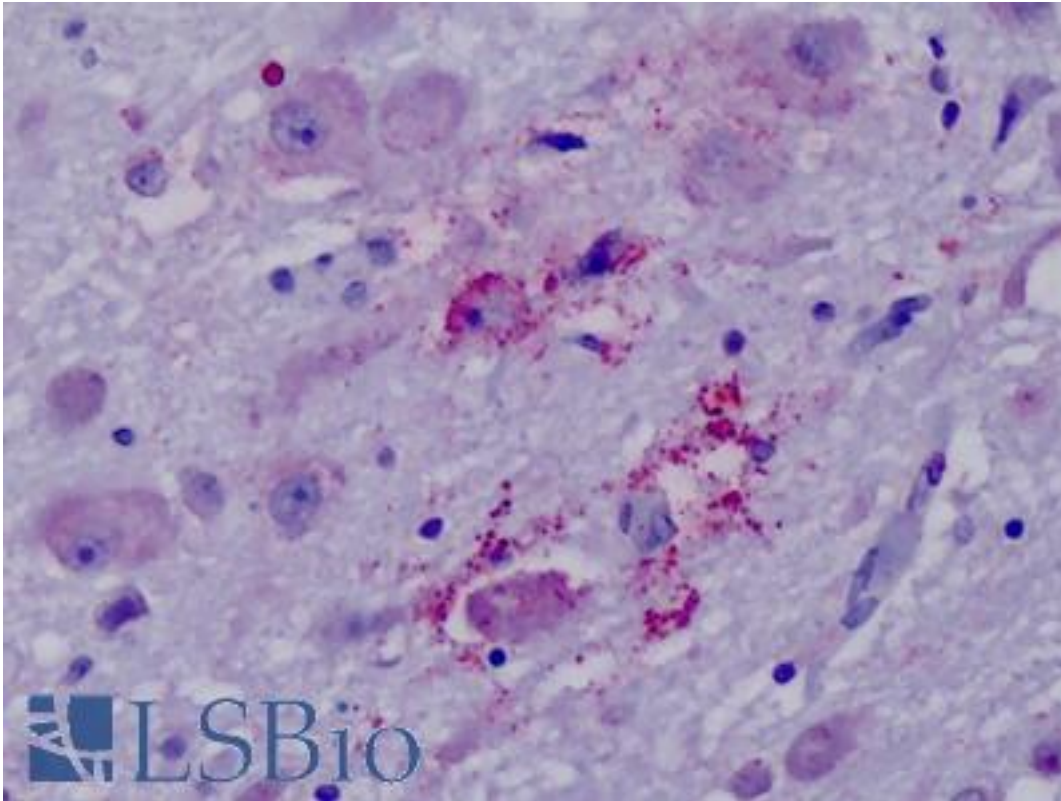
NPY4R / PPYR1 Rabbit anti-Human Polyclonal (Cytoplasmic Domain) Antibody - LS-A1070 - LSBio	
<b>CatalogID:</b>	LS-A1070
<b>Target:</b>	neuropeptide Y receptor Y4 (NPY4R)
<b>Synonyms:</b>	NPY4R Antibody, Neuropeptide Y4 receptor Antibody, Neuropeptide Y receptor type 4 Antibody, PP1 Antibody, PPYR1 Antibody, Y4 Antibody, NPY4-R Antibody
<b>Family / Subfamily:</b>	GPCR / Neuropeptide
<b>Host</b>	NPY4R antibody was produced in Rabbit
<b>Clonality:</b>	Polyclonal
<b>Immunogen Species:</b>	NPY4R / PPYR1 antibody was raised against Human
<b>Antigen Type:</b>	Synthetic peptide
<b>Immunogen:</b>	NPY4R / PPYR1 antibody was raised against synthetic 19 amino acid peptide from 3rd cytoplasmic domain of human PPYR1. Percent identity with other species by BLAST analysis: Human, Gorilla, Gibbon (100%); Monkey (95%).
<b>Specificity:</b>	Human PPYR1. BLAST analysis of the peptide immunogen showed no homology with other human proteins.
<b>Epitope:</b>	Cytoplasmic Domain
<b>Reactivity:</b>	Human, Gorilla, Gibbon
<b>Predicted Reactivity:</b>	Monkey
<b>Purification:</b>	Immunoaffinity purified
<b>Presentation:</b>	PBS, 0.1% sodium azide.
<b>Recommended Storage:</b>	Long term: -70°C; Short term: +4°C
<b>Uses:</b>	IHC - Paraffin (16 µg/ml) (Optimal dilution to be determined by the researcher)
<b>Size:</b>	50 µg
<b>Concentration:</b>	1 mg/ml

**Immunohistochemistry Image:**



Anti-PPYR1 antibody IHC of human brain, substantia nigra. Immunohistochemistry of formalin-fixed, paraffin-embedded tissue after heat-induced antigen retrieval. Antibody LS-A1070 dilution 16 ug/ml.

**Immunohistochemistry Image:**



Anti-PPYR1 antibody IHC of human brain, hypothalamus. Immunohistochemistry of formalin-fixed, paraffin-embedded tissue after heat-induced antigen retrieval. Antibody LS-A1070 dilution 16 ug/ml.

**Requested From:**

Japan

Laboratory Reagent For In Vitro Research Use Only

Not for resale without prior written consent from LifeSpan BioSciences, Inc.

Created on 9/23/2014

© 2014 LifeSpan BioSciences