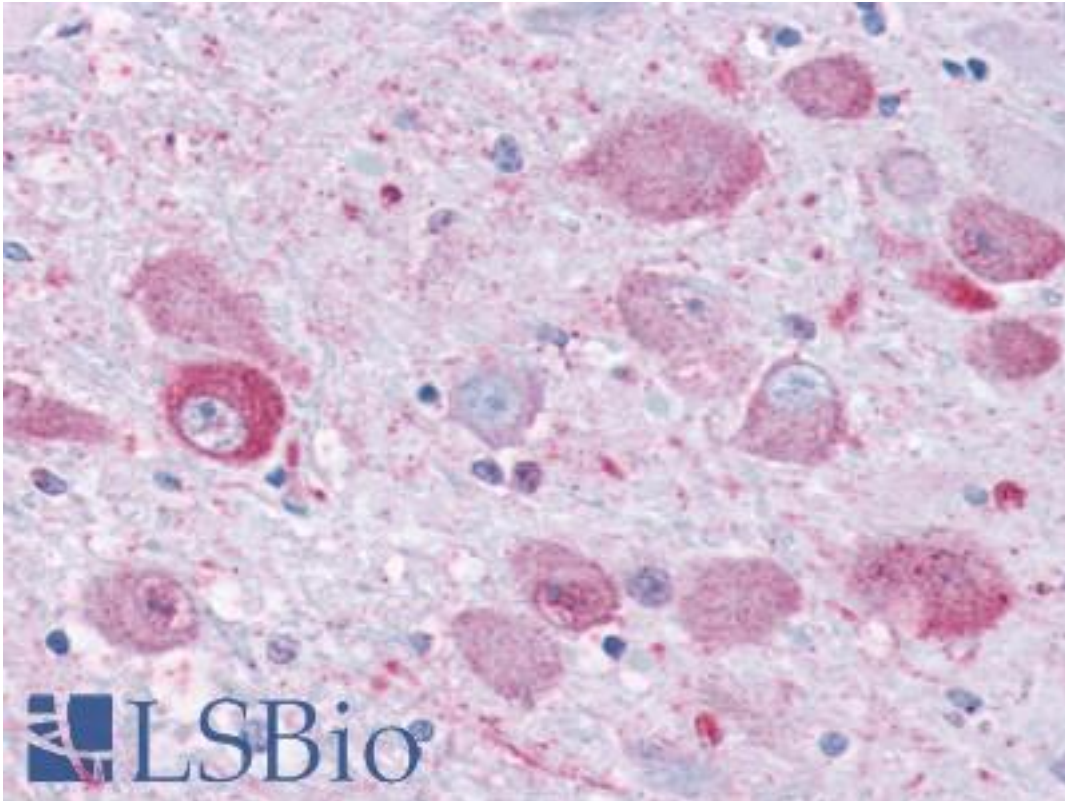


NPY1R Rabbit anti-Human Polyclonal (Cytoplasmic Domain) Antibody - LS-A1065 - LSBio	
<b>CatalogID:</b>	LS-A1065
<b>Target:</b>	neuropeptide Y receptor Y1 (NPY1R)
<b>Synonyms:</b>	NPY1R Antibody, NPYY1 Antibody, NPY-Y1 receptor Antibody, Neuropeptide Y receptor type 1 Antibody, PY receptor Y1 Antibody, Neuropeptide Y receptor Y1 Antibody, Neuropeptide Y-Y1 receptor Antibody, Neuropeptide Y1 receptor Antibody, NPY1-R Antibody, NPYR Antibody
<b>Family / Subfamily:</b>	GPCR / Neuropeptide
<b>Host</b>	NPY1R antibody was produced in Rabbit
<b>Clonality:</b>	Polyclonal
<b>Immunogen Species:</b>	NPY1R antibody was raised against Human
<b>Antigen Type:</b>	Synthetic peptide
<b>Immunogen:</b>	NPY1R antibody was raised against synthetic 18 amino acid peptide from 3rd cytoplasmic domain of human NPY1R. Percent identity with other species by BLAST analysis: Human, Gorilla, Gibbon, Monkey, Marmoset, Mouse, Rat, Bat, Dog, Panda, Rabbit, Horse, Pig, Guinea pig (100%); Sheep, Hamster, Elephant (94%); Bovine, Lizard (89%); Xenopus (83%).
<b>Specificity:</b>	Human NPY1R. BLAST analysis of the peptide immunogen showed no homology with other human proteins, except NPY6R (61%).
<b>Epitope:</b>	Cytoplasmic Domain
<b>Reactivity:</b>	Human, Gorilla, Gibbon, Monkey, Mouse, Rat, Bat, Dog, Guinea pig, Horse, Pig, Rabbit
<b>Predicted Reactivity:</b>	Hamster, Sheep
<b>Purification:</b>	Immunoaffinity purified
<b>Presentation:</b>	PBS, 0.1% sodium azide.
<b>Recommended Storage:</b>	Long term: -70°C; Short term: +4°C
<b>Uses:</b>	IHC - Paraffin (16 µg/ml) (Optimal dilution to be determined by the researcher)
<b>Size:</b>	50 µg
<b>Concentration:</b>	1 mg/ml

**Immunohistochemistry Image:**



Anti-NPY1R antibody LS-A1065 IHC of human brain. Immunohistochemistry of formalin-fixed, paraffin-embedded tissue after heat-induced antigen retrieval.

**Requested From:**

Japan

Laboratory Reagent For In Vitro Research Use Only

Not for resale without prior written consent from LifeSpan BioSciences, Inc.

Created on 9/23/2014

© 2014 LifeSpan BioSciences