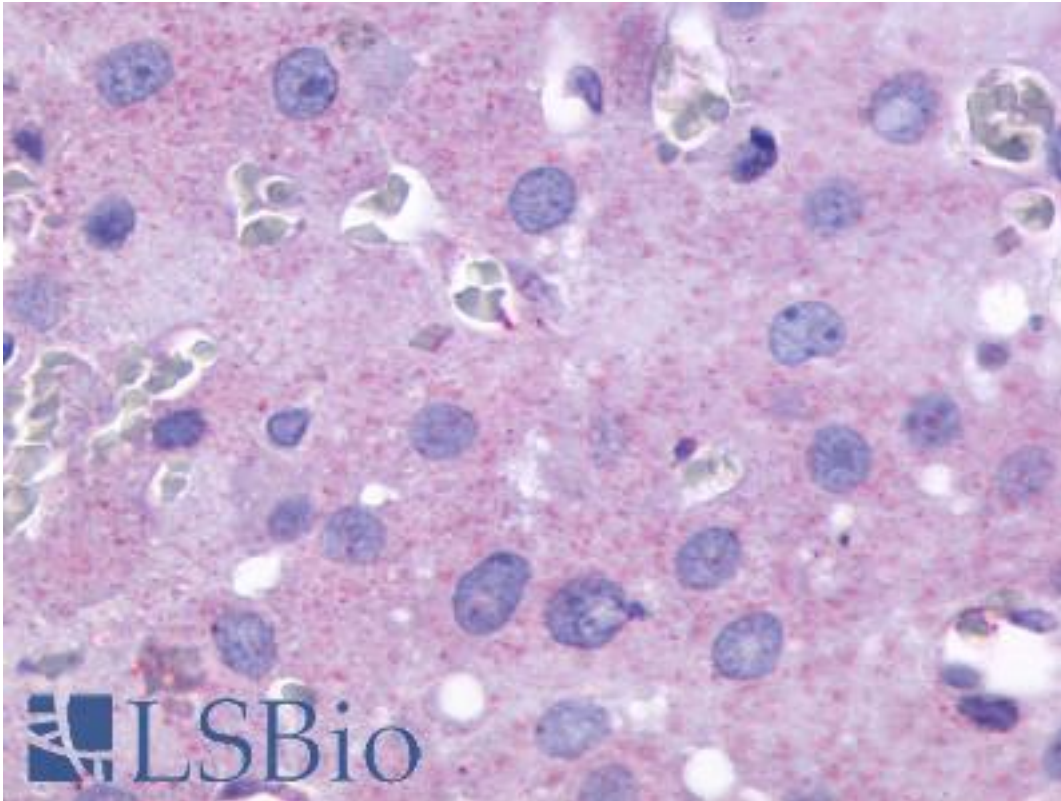


FP / PTGFR Rabbit anti-Human Polyclonal (Cytoplasmic Domain) Antibody - LS-A1048 - LSBio	
<b>CatalogID:</b>	LS-A1048
<b>Target:</b>	prostaglandin F receptor (FP) (PTGFR)
<b>Synonyms:</b>	PTGFR Antibody, PGF receptor Antibody, PGF2-alpha receptor Antibody, Prostaglandin F receptor (FP) Antibody, FP Antibody, PGF2 alpha receptor Antibody, Prostaglandin F receptor Antibody, Prostanoid FP receptor Antibody
<b>Family / Subfamily:</b>	GPCR / Prostanoid
<b>Host</b>	PTGFR antibody was produced in Rabbit
<b>Clonality:</b>	Polyclonal
<b>Immunogen Species:</b>	FP / PTGFR antibody was raised against Human
<b>Antigen Type:</b>	Synthetic peptide
<b>Immunogen:</b>	FP / PTGFR antibody was raised against synthetic 16 amino acid peptide from 2nd cytoplasmic domain of human PTGFR. Percent identity with other species by BLAST analysis: Human, Gorilla, Gibbon, Monkey, Bat, Dog, Elephant, Panda, Rabbit, Horse, Pig (100%); Marmoset, Mouse, Sheep, Bovine, Turkey, Chicken, Platypus (94%); Rat, Xenopus (88%).
<b>Specificity:</b>	Human PTGFR. BLAST analysis of the peptide immunogen showed no homology with other human proteins.
<b>Epitope:</b>	Cytoplasmic Domain
<b>Reactivity:</b>	Human, Gorilla, Gibbon, Bat, Dog, Horse, Pig, Rabbit
<b>Predicted Reactivity:</b>	Monkey, Mouse, Bovine, Sheep, Chicken
<b>Purification:</b>	Immunoaffinity purified
<b>Presentation:</b>	PBS, 0.1% sodium azide.
<b>Recommended Storage:</b>	Long term: -70°C; Short term: +4°C
<b>Uses:</b>	IHC - Paraffin (7 - 11 µg/ml) (Optimal dilution to be determined by the researcher)
<b>Size:</b>	50 µg
<b>Concentration:</b>	1 mg/ml

**Immunohistochemistry Image:**



Anti-PTGFR antibody LS-A1048 IHC of human ovary. Immunohistochemistry of formalin-fixed, paraffin-embedded tissue after heat-induced antigen retrieval.

**Requested From:**

Japan

Laboratory Reagent For In Vitro Research Use Only

Not for resale without prior written consent from LifeSpan BioSciences, Inc.

Created on 9/23/2014

© 2014 LifeSpan BioSciences