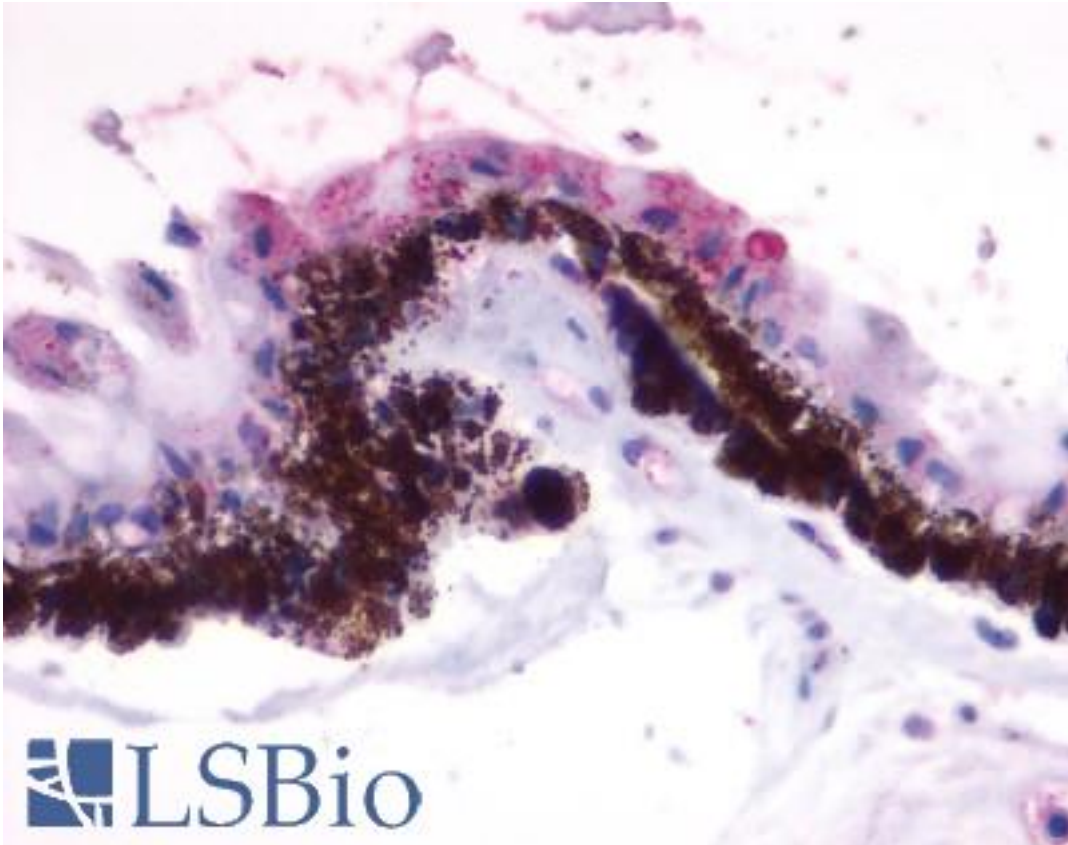


RGR Rabbit anti-Human Polyclonal (Extracellular Domain) Antibody - LS-A1043 - LSBio

CatalogID:	LS-A1043
Target:	retinal G protein coupled receptor (RGR)
Synonyms:	RGR Antibody, RGR-opsin Antibody, RP44 Antibody
Family / Subfamily:	GPCR / Opsin
Host	RGR antibody was produced in Rabbit
Clonality:	Polyclonal
Immunogen Species:	RGR antibody was raised against Human
Antigen Type:	Synthetic peptide
Immunogen:	RGR antibody was raised against synthetic 16 amino acid peptide from 2nd extracellular domain of human RGR. Percent identity with other species by BLAST analysis: Human, Gorilla, Gibbon, Monkey, Marmoset, Horse, Xenopus (100%); Bovine (94%); Mouse, Rat, Hamster, Elephant, Panda, Rabbit, Pig, Platypus (88%); Dog, Turkey, Chicken, Pufferfish, Zebrafish (81%).
Specificity:	Human RGR. BLAST analysis of the peptide immunogen showed no homology with other human proteins.
Epitope:	Extracellular Domain
Reactivity:	Human, Gorilla, Gibbon, Monkey, Horse, Xenopus
Predicted Reactivity:	Bovine
Purification:	Immunoaffinity purified
Presentation:	PBS, 0.1% sodium azide.
Recommended Storage:	Long term: -70°C; Short term: +4°C
Uses:	IHC - Paraffin (9 - 17 µg/ml) (Optimal dilution to be determined by the researcher)
Size:	50 µg
Concentration:	1 mg/ml

Immunohistochemistry Image:



Anti-RGR antibody LS-A1043 IHC of human eye, pigmented epithelium within the retina. Immunohistochemistry of formalin-fixed, paraffin-embedded tissue after heat-induced antigen retrieval.

Requested From:

Japan

Laboratory Reagent For In Vitro Research Use Only

Not for resale without prior written consent from LifeSpan BioSciences, Inc.

Created on 9/23/2014

© 2014 LifeSpan BioSciences