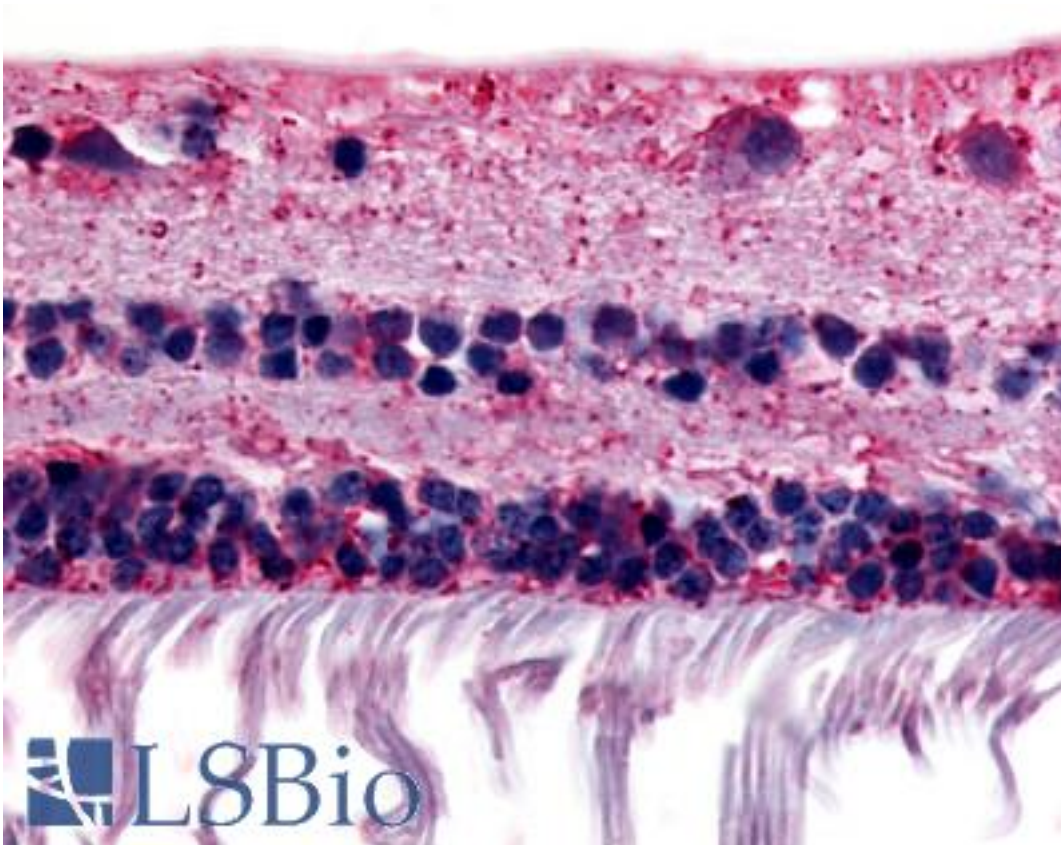


**RGR Rabbit anti-Human Polyclonal (Extracellular Domain) Antibody - LS-A1042 - LSBio**

<b>CatalogID:</b>	LS-A1042
<b>Target:</b>	retinal G protein coupled receptor (RGR)
<b>Synonyms:</b>	RGR Antibody, RGR-opsin Antibody, RP44 Antibody
<b>Family / Subfamily:</b>	GPCR / Opsin
<b>Host</b>	RGR antibody was produced in Rabbit
<b>Clonality:</b>	Polyclonal
<b>Immunogen Species:</b>	RGR antibody was raised against Human
<b>Antigen Type:</b>	Synthetic peptide
<b>Immunogen:</b>	RGR antibody was raised against synthetic 16 amino acid peptide from 1st extracellular domain of human RGR. Percent identity with other species by BLAST analysis: Human, Gibbon, Monkey, Marmoset (100%); Bovine, Horse, Pig (94%); Dog, Bat, Elephant (88%); Mouse, Rat, Hamster (81%).
<b>Specificity:</b>	Human RGR. BLAST analysis of the peptide immunogen showed no homology with other human proteins, except SSTR1 (50%).
<b>Epitope:</b>	Extracellular Domain
<b>Reactivity:</b>	Human, Gibbon, Monkey
<b>Predicted Reactivity:</b>	Bovine, Horse, Pig
<b>Purification:</b>	Immunoaffinity purified
<b>Presentation:</b>	PBS, 0.1% sodium azide.
<b>Recommended Storage:</b>	Long term: -70°C; Short term: +4°C
<b>Uses:</b>	IHC - Paraffin (10 µg/ml) (Optimal dilution to be determined by the researcher)
<b>Size:</b>	50 µg
<b>Concentration:</b>	1 mg/ml

**Immunohistochemistry Image:**



Anti-RGR antibody LS-A1042 IHC of human retina. Immunohistochemistry of formalin-fixed, paraffin-embedded tissue after heat-induced antigen retrieval.

**Requested From:**

Japan

Laboratory Reagent For In Vitro Research Use Only

Not for resale without prior written consent from LifeSpan BioSciences, Inc.

Created on 9/23/2014

© 2014 LifeSpan BioSciences