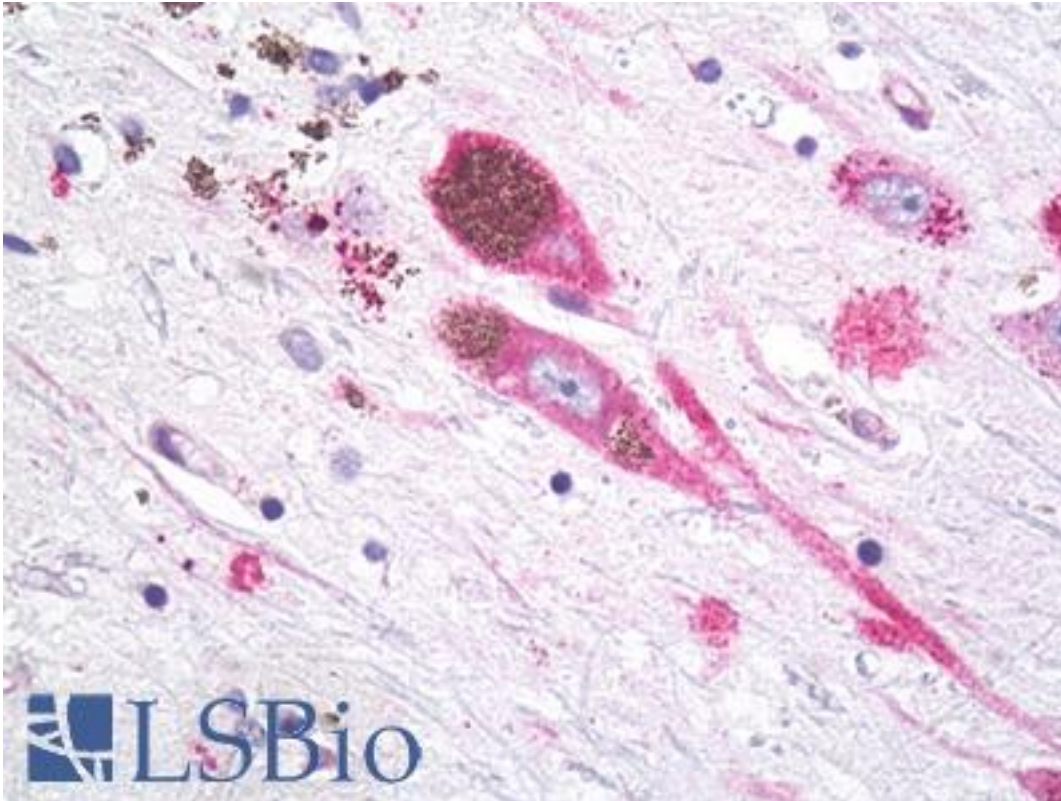


MC1R Rabbit anti-Human Polyclonal (Cytoplasmic Domain) Antibody - LS-A1040 - LSBio	
CatalogID:	LS-A1040
Target:	melanocortin 1 receptor (alpha melanocyte stimulating hormone receptor) (MC1R)
Synonyms:	MC1R Antibody, CMM5 Antibody, MC1 receptor Antibody, MC1-R Antibody, MSHR Antibody, Melanocortin receptor 1 Antibody, Melanotropin receptor Antibody, Melanocortin 1 receptor Antibody, MSH-R Antibody, SHEP2 Antibody
Family / Subfamily:	GPCR / Melanocortin
Host	MC1R antibody was produced in Rabbit
Clonality:	Polyclonal
Immunogen Species:	MC1R antibody was raised against Human
Antigen Type:	Synthetic peptide
Immunogen:	MC1R antibody was raised against synthetic 16 amino acid peptide from 3rd cytoplasmic domain of human MC1 Receptor. Percent identity with other species by BLAST analysis: Human, Chimpanzee, Gorilla, Orangutan, Gibbon, Monkey (100%); Baboon, Cat, Panda (94%).
Specificity:	Human MC1 Receptor. BLAST analysis of the peptide immunogen showed no homology with other human proteins.
Epitope:	Cytoplasmic Domain
Reactivity:	Human, Chimpanzee, Gorilla, Orangutan, Gibbon, Monkey
Purification:	Immunoaffinity purified
Presentation:	PBS, 0.1% sodium azide.
Recommended Storage:	Long term: -70°C; Short term: +4°C
Uses:	IHC - Paraffin (5 - 7 µg/ml) (Optimal dilution to be determined by the researcher)
Size:	50 µg
Concentration:	1 mg/ml

Immunohistochemistry Image:



Anti-MC1R antibody IHC of brain, substantia nigra, neurons. Immunohistochemistry of formalin-fixed, paraffin-embedded tissue after heat-induced antigen retrieval. Antibody LS-A1040 dilution 5-7 ug/ml.

Requested From:

Japan

Laboratory Reagent For In Vitro Research Use Only

Not for resale without prior written consent from LifeSpan BioSciences, Inc.

Created on 9/23/2014

© 2014 LifeSpan BioSciences