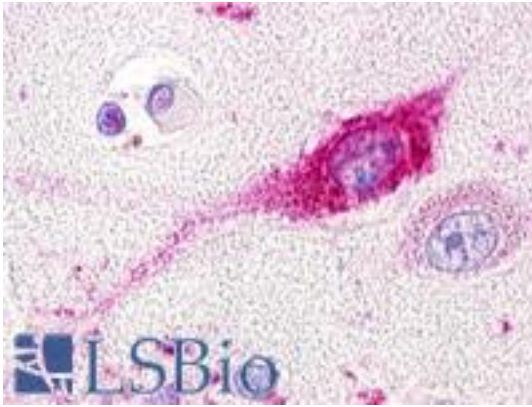


**GPR20 Rabbit anti-Human Polyclonal (C-Terminus) Antibody - LS-A104 - LSBio**

|                             |   |
|-----------------------------|---|
| <b>CatalogID:</b>           | LS-A104   |
| <b>Target:</b>              | G protein-coupled receptor 20 (GPR20)   |
| <b>Synonyms:</b>            | GPR20 Antibody, G-protein coupled receptor 20 Antibody, G protein-coupled receptor 20 Antibody  |
| <b>Family / Subfamily:</b>  | GPCR / Orphan-A   |
| <b>Host</b>                 | GPR20 antibody was produced in Rabbit   |
| <b>Clonality:</b>           | Polyclonal  |
| <b>Immunogen Species:</b>   | GPR20 antibody was raised against Human   |
| <b>Antigen Type:</b>        | Synthetic peptide   |
| <b>Immunogen:</b>           | GPR20 antibody was raised against synthetic 20 amino acid peptide from C-terminus of human GPR20. Percent identity with other species by BLAST analysis: Human, Gorilla (100%). |
| <b>Specificity:</b>         | Human GPR20. BLAST analysis of the peptide immunogen showed no homology with other human proteins.  |
| <b>Epitope:</b>             | C-Terminus  |
| <b>Reactivity:</b>          | Human, Gorilla  |
| <b>Purification:</b>        | Immunoaffinity purified   |
| <b>Presentation:</b>        | PBS, 0.1% sodium azide.   |
| <b>Recommended Storage:</b> | Long term: -70°C; Short term: +4°C  |
| <b>Uses:</b>                | IHC - Paraffin (3.6 µg/ml) (Optimal dilution to be determined by the researcher)  |
| <b>Size:</b>                | 50 µg   |
| <b>Concentration:</b>       | 1 mg/ml   |

**Immunohistochemistry Image:**



Anti-GPR20 antibody LS-A104 IHC of human brain, neuron. Immunohistochemistry of formalin-fixed, paraffin-embedded tissue after heat-induced antigen retrieval.

**Requested From:**

Japan

Laboratory Reagent For In Vitro Research Use Only

Not for resale without prior written consent from LifeSpan BioSciences, Inc.

Created on 9/23/2014

© 2014 LifeSpan BioSciences