

GenScript TissueDirect™ Multiplex PCR System



Technical Manual No. 0173

Version 20040914

I	Description	1
II	Applications	2
III	Key Features	2
IV	Shipping and Storage	2
V	Simplified Procedures	2
VI	Detailed Experimental Procedures	3
VII	Examples Using the System	4
VIII	Troubleshooting	6
IX	Order Information	7

I. DESCRIPTION

TissueDirect™ Multiplex PCR System is a powerful reagent kit for both easy and rapid genomic DNA preparation and multiplex PCR amplification. Genomic DNA is directly released from cells (tissues, mouse tails, hair shafts, and cell culture) using proprietary reagents in 12 minutes without DNA purification. The genomic DNA can be used immediately in PCR amplification of multiple gene targets (up to >1,000) or stored at + 4 °C for future use (stable at least 6 months at + 4 °C).

TissueDirect™ PCR System with Enzyme (L00195) contains TD-A Buffer, TD-B Buffer, TD-C Buffer, and PCR Premix. The fresh mixture of TD-A and TD-B at a 1:9 ratio is used to lyse cells and to release genomic DNA. TD-C is used to bring the conditions close to those for PCR. PCR Premix contains PCR buffer (TD-D), dNTP, Mg²⁺ and "HotStart" Script™ DNA polymerase for PCR amplification.

L00195 Components	100 Preps
TD-A Buffer	0.50 ml
TD-B Buffer	4.50 ml
TD-C Buffer	5.00 ml
2X PCR Premix	1.00 ml
PCR-grade Water	1.00 ml

TissueDirect™ PCR System without Enzyme (L00194) is also available from GenScript Corporation. This kit allows our customers to use any other DNA polymerases that they prefer to use for PCR reaction. The kit contains TD-A Buffer, TD-B Buffer, TD-C Buffer, and TD-D Buffer. The fresh mixture of TD-A and TD-B at a 1:9 ratio is used to lyse cells and to release genomic DNA. TD-C is used to bring the conditions close to those for PCR. TD-D Buffer is an optimized 10X Script™ DNA polymerase buffer (without dNTP). Limited tests at GenScript show that this buffer is compatible with Taq DNA polymerases from other vendors and also increases PCR sensitivity.

L00194 Components	100 Preps
TD-A Buffer	0.50 ml
TD-B Buffer	4.50 ml
TD-C Buffer	5.00 ml
TD-D Buffer	0.20 ml
PCR-grade Water	1.00 ml

II. APPLICATIONS

For genomic DNA extraction from:

- tissues (fresh, frozen or paraffin), tissue microdissection
- animal (such as mouse) tails
- yeast cells
- buccal cells
- cell culture
- hair shaft
- saliva
- sperm

For blood, please use GenScript Blood-Ready™ Multiplex PCR System.

And for application such as:

- SNP genotyping and mutation detection
- Target detection in transgenic mice
- DNA sequencing and cloning
- Quantitative PCR

III. KEY FEATURES

- ♣ Easy to perform: very simple and rapid procedure to extract genomic DNA in 12 min.
- ♣ High specificity: highly specific amplification of genomic DNA using “HotStart” Script™ DNA polymerase (a GenScript proprietary DNA polymerase).
- ♣ Multiplex PCR: up to >1,000 DNA sequences can be amplified using multiplex PCR primers.
- ♣ Super sensitivity: genomic DNA from a single sperm has been successfully used in multiplex PCR amplification of more than 1000 amplicons and subsequent DNA genotyping assays. The super sensitivity of this kit will dramatically cut down the tissue usage to save your precious tissue samples. This kit will also allow you to use less invasive method for genomic DNA preparation needed for genotyping.

IV. SHIPPING AND STORAGE

This kit is shipped on blue ice. Store the kit at -20 °C.

V. SIMPLIFIED PROCEDURES

1. Thaw Buffer TD-A, TD-B and TD-C at room temperature and vortex the solutions. After thawing, keep TD-A buffer on ice, TD-B and TD-C can be kept on ice or at room temperature. Mix 5 µl TD-A and 45 µl TD-B (A to B ratio is 1:9) in a microcentrifuge tube to make the lysis solution. Add the lysis solution to tissue samples.
2. Mix and incubate the samples at 65 °C for 10 min.
3. Remove the tubes from incubation and add 50 µl of TD-C to each sample tube. Mix by tapping the tubes gently.
4. Spin down in a microcentrifuge at full-speed (~14,000 rpm) for 1 minute.
5. Set-up and perform PCR reaction in a PCR cycler.
6. Analyze PCR reactions by agarose gel electrophoresis.

Overview of Kit Procedure

Add Lysis Solution to Tissue Sample



Incubate at 65°C for 10 min



Add Neutralization Solution Set up PCR with a portion



Perform PCR



Gel electrophoresis



VI. DETAILED EXPERIMENTAL PROCEDURES

A. Genomic DNA Preparation

1. Thaw Buffer TD-A, TD-B and TD-C at room temperature and vortex the solutions. After thawing, keep TD-A buffer on ice, keep TD-B and TD-C on ice or at room temperature. Mix 5 μ l TD-A and 45 μ l TD-B (A to B ratio is 1:9) in a microcentrifuge tube to make the lysis solution (total 50 μ l; for buccal cells, 150 μ l is needed, see below).
2. Dispense the lysis solution from step 1 into the sample tube containing tissue or cells. Mix and incubate the samples at 65 °C for 10 min.
 - a. Mouse tails: cut a small piece (~0.2 cm, **do not use tissue more than 0.2 cm in size**) with scissors freshly rinsed in 70% ethanol and place it in the lysis solution in a round-bottomed microcentrifuge tube, make sure that the lysis solution covers the sample.
 - b. Other tissue: place small pieces of tissue (cut into small pieces with scissors or scalpel freshly rinsed in 70% ethanol) in the lysis solution. **Do not use more than 5 mg tissue. A single needle punch has been shown to give enough genomic DNA for PCR amplification.**
 - c. Paraffin tissue: first deparaffinize the tissue following your own method or the method described below.
 Deparaffinization. Deparaffinize a small piece of tissue (~0.2 cm, **do not use tissue more than 0.2 cm in size**) in 2 changes of xylene (1.5 ml) for 15 minutes each at 45 °C. Carefully rinse the tissue sequentially with 100%, 90%, 70%, 50% ethanol and water (1.5 ml each). Aspirate each solution before adding the next and incubate for 5 minutes at room temperature before each solution change. Rinse one more time with water to remove residual ethanol. After deparaffinization, add 50 μ l lysis solution to the tissue.
 - d. Hair shafts: place one or more hair shafts in the lysis solution with the root ends down in the solution. After incubation at 65°C for 10 min, remove the hair shaft with clean forceps. A single hair shaft has been shown to give enough genomic DNA for PCR amplification. Do not use more than 10 hair shafts.
 - e. Saliva: pipette 15 μ l of saliva into the lysis solution and mix by brief vortexing.
 - f. Cell (any cells including yeast cells) culture: pipette 15 μ l of cell culture into the lysis solution and mix by brief vortexing.
 - g. Buccal cells: dry swabs (foam-tipped swabs preferred) with buccal cells at room temperature for about 15 minutes. Place the swab into a microcentrifuge tube containing 150 μ l lysis solution and rotate the swab in the solution at least 5 times in 2 minutes. Rotate and press the swab firmly against the side of the tube to ensure most of the liquid remains in the tube.
3. Remove the tubes from incubation and add 50 μ l of TD-C to each sample tube. Mix by tapping the tubes gently.
4. Spin down in a microcentrifuge at full-speed (~14,000 rpm) for 1 minute. Store the genomic DNA at 4 °C or use it immediately in PCR amplification.

Please note:

- (1) The tissue is not expected to be completely digested after this procedure. Make sure to spin down the genomic DNA solution and take the supernatant for PCR reaction.
- (2) Genomic DNA is fragile and high molecular weight DNA is sheared easily by mechanical forces. Do not vortex solutions containing genomic DNA.
- (3) For a single cell, prepare genomic DNA in 10 μ l (5 μ l of buffer AB mixture and 5 μ l of buffer C). Set up a 50 μ l PCR reaction using all the 10 μ l genomic DNA.

B. PCR Amplification

One or multiple gene targets can be amplified using a pair of primers or multiple pairs of primers (multiplex PCR) from the genomic DNA prepared as described above. PCR reactions can be set up at room temperature since “HotStart” Script™ DNA polymerase is used.

1. Set up 20 μ l PCR reaction by adding the following reagents to a thin-walled PCR microcentrifuge tube or plate and mixing gently. The table below is used only as a guide. For multiplex PCR, the primer concentrations and cycling parameters need to be optimized. Use only 1 μ l of genomic DNA for 20 μ l of PCR reaction.



Reagent	Volume	Final Concentration
Water, PCR grade	7 μ l	
4 μ M Forward primer	1 μ l	200 nM
4 μ M Reverse primer	1 μ l	200 nM
Genomic DNA	1 μ l	
PCR Premix	10 μ l	
Total	20 μ l	

If you are using TissueDirect™ PCR System without Enzyme, set up 20 μ l PCR reaction following your PCR kit instruction, and use 1 μ l of genomic DNA prepared. As mentioned before, limited tests at GenScript show that TD-D buffer (without dNTP) is compatible with Taq DNA polymerases from different vendors.

2. The commonly used thermal profiles can be used for PCR amplification. The following two thermal profiles are recommended for the amplification of a single amplicon and multiple amplicons, respectively.

a. Thermal profiles for amplification of a single amplicon with the primer concentration of 200 nM for each primer.

Activation of *Taq* DNA polymerase: 94 °C for 15 min
40 PCR cycles: Denaturation: 94 °C for 40 sec
 Annealing: 55 °C – 60 °C for 1 min
 Extension: 72 °C for 30 sec to 2 min (~1 kb/min)
Final extension: 72 °C for 3 min.

b. Thermal profiles for amplification of multiple amplicons with the each primer at concentration of 50 nM.

Activation of *Taq* DNA polymerase: 94 °C for 15 min.
40 PCR cycles: Denaturation: 94 °C for 40 sec
 Annealing: 55 °C – 60 °C for 2 min
 Extension: ramping from 55 °C to 72 °C for 5 min
Final extension: 72°C for 3 min.

VII. EXAMPLES USING THE SYSTEM

A. Mouse Tail Genomic DNA Preparation and PCR Amplification.

TissueDirect™ PCR system with Enzyme was used to extract mouse genomic DNA's from three mouse tails. 3 pieces of tissue with different sizes of about 1mm, 2 mm and 4 mm, respectively, were cut from each mouse tail. Mouse genomic DNA's were extracted from all 9 pieces of mouse tail tissues and amplified using TissueDirect™ Multiplex PCR system following the kit instructions. A pair of primers was designed to amplify mouse Ephrin A5 gene with the sequences shown below:

Forward primer: 5'-TCCAGCTGTGCAGTTCTCCAAAACA-3'
Reverse primer: 5'-ATTCCAGAGGGGTGACTACACATT-3'

The results were shown in Figure 1.

Figure 1 shows that the target PCR product of 396 bp fragment of mouse Ephrin A5 gene is seen from all 9 genomic DNA samples. There is little difference between genomic DNA samples extracted from different mouse tails, or from different sizes of the same mouse tail. This demonstrates the high quality and reproducibility of TissueDirect™ PCR System.

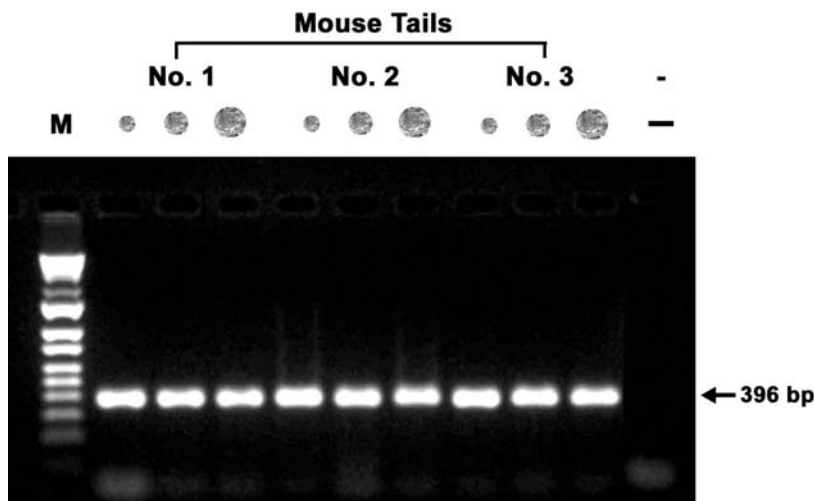


Figure 1. PCR analysis of genomic DNA extracted from mouse tails. Genomic DNA's were extracted from 9 pieces of tissue (with different sizes of about 1mm, 2 mm and 4 mm, respectively) cut from 3 mouse tails using TissueDirect™ Multiplex PCR kit following the kit instructions. All genomic DNA samples were amplified using the PCR premix in the kit following the kit instructions. Last lane is a negative control. PCR products are 396 bp for the mouse Ephrin A5 gene.

B. Human Genomic DNA Preparation and PCR Amplification.

TissueDirect™ PCR System (with Enzyme) was used to extract human genomic DNA's from HEK293 cells, breast cancer microdissection and human hair shafts. Human genomic DNA's were then amplified using TissueDirect™ Multiplex PCR system (with Enzyme) following the kit instructions. 12 pairs of primers were designed to amplify 12 different human genes with the sequences shown below:

No.	DNA size (bp)	Forward Primer sequence	Reverse Primer sequence
1	142	ATTGTAGGGAAATGTCTGTCTGAT	ACACCAATCTCTACATCATAAGGAG
2	133	AGTGATCATGCTGTTTTCTCT	GATTTTTATCCTGTTTGTGCC
3	126	TCAAATAATTGTTCCAAAGTAGCA	AAAATGACCTTTGCAAGTACATTT
4	119	TGATTATTGGGAAAAGATCTGAGAC	ACAAACCCACTTTTCATCACA
5	112	AAGCATACCTGTGAGAGTGCACA	AGGCCAATGGGTAATGGTAAATCCC
6	105	CACCTCTGACTTCTCAGGTGT	GCCTCTAACATTCTGTTTAggAGA
7	100	GTAAAGAATTCAATGAGTATGCCA	CTTGTTTGCAGGGTGATGCCATTT
8	96	TGTCCCTCTGAATAATTGTAGAA	ATGTCTGAGTTAAATACCACACAG
9	90	TAAGACAGTTTTCTTGGAGAGTAAACATTG	TTTTTTCAAAGTCTTCAGATATGGT
10	85	CTCCAACACACAGAACAGGAGGGAGGAAT	TAATGGAAGGAGTAGCCCAACT11
11	80	TCATATTAAGCAACTAATATTTGTGCCATC	CATCTGGTGCCCATGTGTGTC
12	76	TCCCGTCACCTGAAACTGCTGTCACC	GCATATTTGGTGGAAAAGTCTACAG

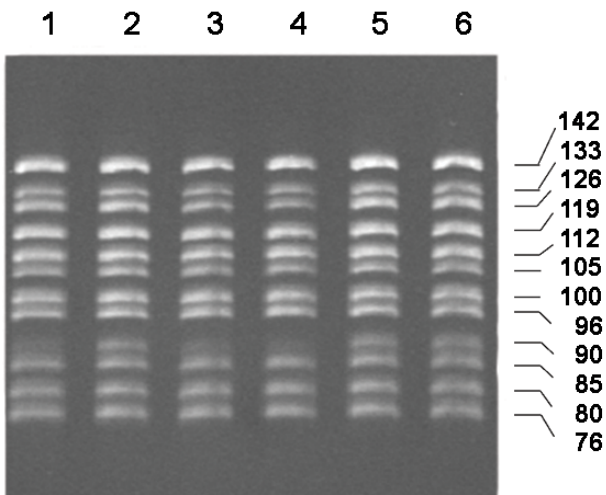


Figure 2. Human genomic DNA was extracted and amplified using TissueDirect™ Multiplex PCR System (with Enzyme). PCR DNA sizes are shown on the right. Lane 1 and 2 using 30 HEK293 cells. Lane 3 and 4 using breast cancer microdissection. Lane 5 and 6 using human hair shafts.

**VIII. TROUBLESHOOTING**

The table below is guideline for troubleshooting.

Problem	Probable Cause	Solution
No PCR DNA	PCR may be inhibited by components in the tissue.	Dilute the genomic DNA 10 fold with a mixture of TD-A, TD-B and TD-C at the ratio of 1:9:10.
	One or more PCR components may be missing.	Always run a positive control side by side with PCR using genomic DNA prepared using the kit.
	PCR conditions are not optimized. The annealing temperature may be too high; More cycles may be needed; The denaturation time may be too short; The extension time may be too short.	Optimize the PCR conditions by decreasing annealing temperature in 2-4 °C increments, or increasing the number of cycles, or increasing the denaturation time in 10 second increments, or increasing the extension time in 1minute increments. It is recommended to change one parameter each time.
	The primers may not be designed optimally.	The primer designing is critical for high quality PCR. Longer primers of 25-30 nucleotides with a GC content of 45-60% and with a more stable 5'-end than 3'-end usually make good primers.
	Target template is highly GC-rich.	The target will be difficult to denature even with a longer denaturation step. Betaine, DMSO and formamide can help amplification of high GC-rich template.
	Genomic DNA is lost especially when a single cell is used.	Do not use pipette tips to mix. Tap the centrifuge tubes gently to mix.
Non-specific DNA products	The primers may not be designed optimally.	Primers may form dimers, or prime at non-specific target sequences. Longer primers of 25-30 nucleotides with a GC content of 45-60% and with a more stable 5'-end than 3'-end usually make good primers.
	Annealing temperature is too low.	Optimize the PCR conditions by increasing annealing temperature in 2-4 °C increments, or decreasing the number of cycles.
High background (with your own Taq polymerase)	Too much Taq DNA polymerase may be used.	Optimize the PCR conditions by decreasing the amount of Taq DNA polymerase in 0.5 unit increments.
False positive	Reagents are contaminated.	It is recommended that a negative control without using genomic DNA be run to make sure no contamination occurs.



IX. ORDER INFORMATION

TissueDirect™ Multiplex PCR System without Enzyme
Catalog Number: L00194

TissueDirect™ Multiplex PCR System with Enzyme
Catalog Number: L00195

Telephone: 732-885-9188, 732-357-3839
Fax: 732-210-0262, 732-885-5878
Email: info@genscript.com

For Research Use Only.

- The PCR process is covered by US. Patent numbers 4683195 and 4683202 issued to Cetus and owned by Hoffman-La Roche Inc. Genscript does not encourage or support the unauthorized use of the PCR process. Use of this product is recommended for persons that either have a license to perform PCR or are not required to obtain a license.

GenScript Corporation

120 Centennial Ave., Piscataway, NJ 08854

Tel: 732-885-9188, 732-357-3839

Fax: 732-210-0262, 732-885-5878

Email: info@genscript.com

Web: <http://www.Genscript.com>