

**THE™ beta Actin Antibody [Biotin], mAb, Mouse****Cat. No.:** A01546**Size:** 100 µg**Synonyms:** THE™ β-Actin Antibody [Biotin], mAb, Mouse;**Description:**

GenScript THE™ β-actin Antibody [Biotin], mAb, Mouse is the biotin conjugated THE™ β-Actin Antibody, mAb, Mouse (A00702) purified from mice ascites by protein A affinity column.

**Immunogen:** KLH-coupled synthetic peptide within residues 1-50 of human β-actin (Swiss Prot: P60709)**Host:** Mouse**Conjugation:** Biotin**Fusion Partner:**

Spleen cells are fused with SP2/0-Ag14 mouse myeloma cells

**Formulation:**

0.5 mg/ml, lyophilized with PBS, pH 7.4, containing 1% BSA and 0.02% sodium azide

**Clone:** 2D1D10**Ig Subclass:** Mouse IgG2a, k**Specificity:** GenScript THE™ β-actin Antibody[Biotin], mAb, Mouse recognizes Mouse, Rabbit, Chicken, Human, Hamster, Cow, Goat, Fish, Pig, and Monkey. The antibody has

not yet been tested in other species.

**Applications:**

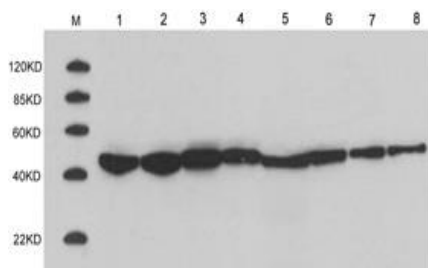
Working concentrations for specific applications should be determined by the investigator. The appropriate concentrations may be affected by secondary antibody affinity, antigen concentration, the sensitivity of the method of detection, temperature, the length of the incubations, and other factors. The suitability of this antibody for applications other than those listed below has not been determined. The following concentration ranges are recommended starting points for this product.

**ELISA:** 0.05-0.2 µg/ml**Western blot:** 0.1-1 µg/ml**Other applications:** user-optimized**Reconstitution:**

Reconstitute the lyophilized antibody (100 µg) with 200 µl of deionized water (or equivalent) to the final concentration of 0.5 mg/ml.

**Storage:**

The antibody is stable in lyophilized form if stored at -20°C or below. The reconstituted antibody can be stored for 2-3 weeks at 2-8°C. For long term storage, aliquot and store at -20°C or below. Avoid repeated freezing and thawing cycles.

**Example**

Loading: 1. 40µg pig muscle cell lysate

2. 40µg fish muscle cell lysate

3. 40µg CHO cell lysate

4. 40µg COS-7 cell lysate

5. 40µg rabbit kidney cell lysate

6. 40µg HeLa cell lysate

7. 20µg HeLa cell lysate

8. 10µg HeLa cell lysate

Primary antibody: 0.5 µg/ml THE™ β-actin Antibody[Biotin], mAb, Mouse (GenScript, A01546)

Secondary antibody: Streptavidin-HRP (GenScript, M00091, 1:10,000)