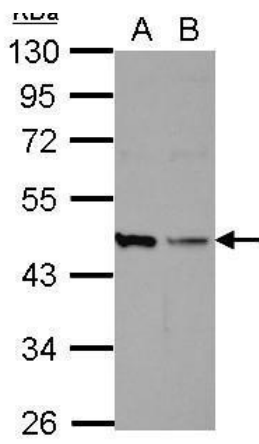




Catalog Number	GTX70200	Package: 100 µl
Product Name	Hice1 antibody [15A2-35]	
Full Name	HAUS augmin-like complex, subunit 8	
Synonyms	MGC20533, NYSAR48, HICE1, HAUS8, NY-SAR-48, NY SAR 48	
Product Description	Mouse monoclonal antibody [15A2-35] to Hice 1	
Background	This antibody binds to Hice 1, or HAUS8, which is 1 of 8 subunits of the 390-kD human augmin complex, or HAUS complex. The augmin complex was first identified in <i>Drosophila</i> , and its name comes from the Latin verb 'augmentare,' meaning 'to increase.' The augmin complex is a microtubule-binding complex involved in microtubule generation within the mitotic spindle and is vital to mitotic spindle assembly (Goshima et al., 2008 [PubMed 18443220]; Uehara et al., 2009 [PubMed 19369198]).[supplied by OMIM].	
Host	Mouse	
Clonality	Monoclonal	
Clone Name	15A2-35	
Isotype	IgG1	
Target	Hice 1	
Antigen Species	Human	
Species Reactivity	Human	
Applications	WB	
Application Note	Suggested starting dilutions are as follows: WB: 1:500-1:3000. Not yet tested in other applications. Optimal working dilutions should be determined experimentally by the end user.	
Positive Controls	293T , HeLa	
Cellular Localization	During interphase, primarily cytoplasmic and associates with centrosomes and with the mitotic spindles, preferentially at the spindle pole vicinity. During anaphase and telophase, additionally associates with the spindle midzone and midbody, respectively.	
Form Supplied	Liquid	
Purification	Affinity purified by Protein G.	
Concentration	1 mg/ml (Please refer to the vial label for the specific concentration)	
Storage Buffer	PBS	
Storage Instruction	For short term use, store at 4°C. For extended use, aliquot and store at -20°C. Avoid repeated freeze-thaw cycles.	
Notes	For <i>In vitro</i> laboratory use only. Not for any clinical, therapeutic, or diagnostic use in humans or animals. Not for animal or human consumption.	
ResearchArea	Cancer > Cell cycle > Cell division Cell Biology > Cell cycle Cell Biology > Cytoskeleton	



GTX70200 WB Image

Sample (30 ug of whole cell lysate)

A: 293T

B: HeLa

10% SDS PAGE

GTX70200 diluted at 1:1000