



Catalog Number GTX0171 **Package:** 100 µl

[Reference](#) (3)

Product Name Estrogen Receptor alpha antibody [1F3]

Full Name estrogen receptor 1

Synonyms P03372, ESR, major ORF, Era, ER, 133430, ER alpha, DKFzP686N23123, ESRA, NR3A1

Product Description Mouse Monoclonal antibody [1F3] to Estrogen Receptor alpha

Background The Estrogen Receptor (ER) is a 65a protein and a member of the steroid family of nuclear receptors. ER is a ligand-activated transcription factor and, when bound to estrogen hormone, induces a conformational change that allows dimerization and binding to estrogen response elements (ERE) sequences. When bound to DNA, ER can positively or negatively regulate gene transcription through the recruitment of coactivator (e.g. SRC-1) or corepressor (e.g. NCoR) proteins.

Host Mouse

Clonality Monoclonal

Clone Name 1F3

Isotype IgG1

Light Chain kappa

Target ER alpha

Immunogen The region encoding amino acids 1-190 expressed in E. coli.

Antigen Species Human

Species Reactivity Human, Rabbit

Applications FACS, IHC-Fr, IP, WB

Application Note

	Suggested dilution	Reference
Flow cytometry/FACS	Assay-dependent dilution	
IHC (Frozen sections)	Assay-dependent dilution	
Immunoprecipitation	Assay-dependent dilution	
Western blot	1:500-1:3000*	

Not tested in other applications.

*Optimal dilutions/concentrations should be determined by the researcher.

Positive Controls MCF7 , MCF7 , ESR1-transfected 293T cells

Predicted Target Size 65 kDa

Cellular Localization Nuclear

Form Supplied Liquid

Purification Protein G Affinity Purified

Purification Note From hybridoma tissue culture supernatant

Concentration 1.56 mg/ml (Please refer to the vial label for the specific concentration)

Storage Buffer Phosphate-buffered saline, pH 7.4, containing no preservatives

Storage Instruction Keep as concentrated solution. Store at 4°C short term. For extended storage aliquot and store at -20°C or below. Avoid freeze-thaw cycles.

Notes For *In vitro* laboratory use only. Not for any clinical, therapeutic, or diagnostic use in humans or animals. Not for animal or human consumption.

consumption.

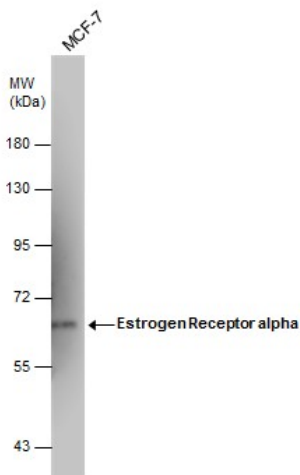
ResearchArea [Cancer > Apoptosis > Metastasis and Invasion > Invasion](#)
[Cancer > Apoptosis > Metastasis and Invasion > Metastasis > Lymphatic](#)
[Cancer > Tumor biomarkers](#)

Application Reference

1. Srilatha B (2004) *Urology* 382-6
2. Ivanova MM (2009) *Mol Cell Endocrinol* 12-21

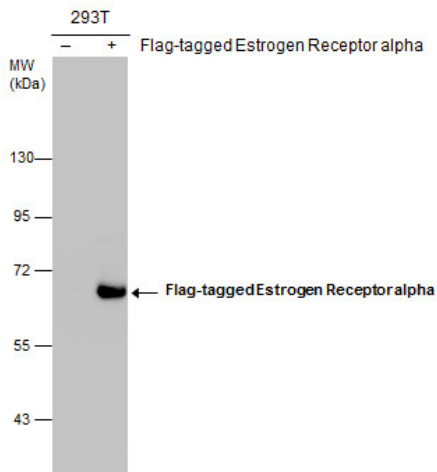
Clone Reference

1. Sun M (2008) *Mol Cancer Ther* 464-73



GTx70171 WB Image

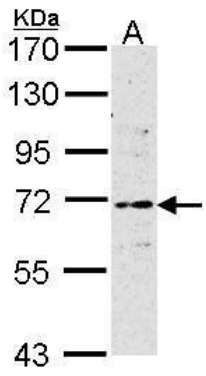
Whole cell extract (60 µg) was separated by 7.5% SDS-PAGE, and the membrane was blotted with Estrogen Receptor alpha antibody (GTx70171) diluted at 1:500. The signal was developed with Trident Sharp-ECL (GTx14698).



GTx70171 WB Image

Non-transfected (-) and transfected (+) 293T whole cell extracts (60 µg) were separated by 7.5% SDS-PAGE, and the membrane was blotted with Estrogen Receptor alpha

Non-transfected (-) and transfected (+) 293T whole cell extracts (30 µg) were separated by 7.5% SDS-PAGE, and the membrane was blotted with Estrogen Receptor alpha antibody [1F3] (GTX70171) diluted at 1:500.



GTX70171 WB Image

Sample (30 ug of whole cell lysate)

A: MCF7

7.5% SDS PAGE

GTX70171 diluted at 1:500