

RGS4 antibody [HL1522]

Cat. No. GTX636996

Host	Rabbit
Clonality	Monoclonal
Isotype	IgG
Application	WB, ICC/IF, IHC-P
Reactivity	Human, Mouse, Rat

Package
100 µl, 25 µl

APPLICATION

Application Note

*Optimal dilutions/concentrations should be determined by the researcher.

Suggested dilution	Recommended dilution
WB	1:500-1:3000
ICC/IF	Assay dependent
IHC-P	Assay dependent

Not tested in other applications.

Calculated MW 23 kDa. ([Note](#))

PROPERTIES

Form	Liquid
Buffer	PBS
Preservative	No Preservative
Storage	Store as concentrated solution. Centrifuge briefly prior to opening vial. For short-term storage (1-2 weeks), store at 4°C. For long-term storage, aliquot and store at -20°C or below. Avoid multiple freeze-thaw cycles.
Concentration	1 mg/ml (Please refer to the vial label for the specific concentration.)
Immunogen	Recombinant protein encompassing a sequence within the center region of human RGS4. The exact sequence is proprietary.
Purification	Affinity purified by Protein A.
Conjugation	Unconjugated

Note

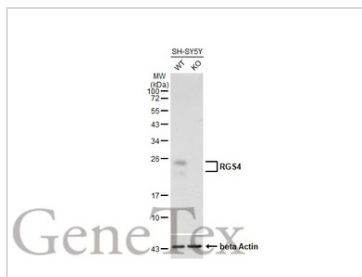
For laboratory research use only. Not for any clinical, therapeutic, or diagnostic use in humans or animals. Not for animal or human consumption.

Purchasers shall not, and agree not to enable third parties to, analyze, copy, reverse engineer or otherwise attempt to determine the structure or sequence of the product.

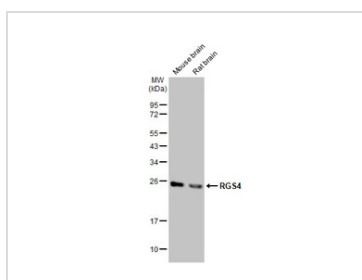


For full product information, images and publications, please visit our [website](#).

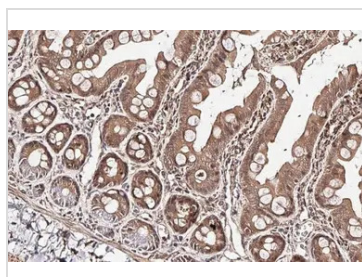
DATA IMAGES

**GTX636996 WB Image**

Unboiled wild-type (WT) and RGS4 knockout (KO) SH-SY5Y cell extracts (15 µg) were separated by 12% SDS-PAGE, and the membrane was blotted with RGS4 antibody [HL1522] (GTX636996) diluted at 1:1000. The HRP-conjugated anti-rabbit IgG antibody (GTX213110-01) was used to detect the primary antibody.

**GTX636996 WB Image**

Various tissue extracts (50 µg) were separated by 12% SDS-PAGE, and the membrane was blotted with RGS4 antibody [HL1522] (GTX636996) diluted at 1:1000. The HRP-conjugated anti-rabbit IgG antibody (GTX213110-01) was used to detect the primary antibody, and the signal was developed with Trident ECL plus-Enhanced.

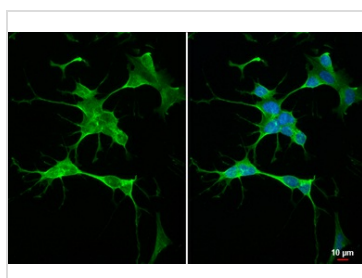
**GTX636996 IHC-P Image**

RGS4 antibody [HL1522] detects RGS4 protein at cell membrane and nucleus by immunohistochemical analysis.

Sample: Paraffin-embedded rat intestine.

RGS4 stained by RGS4 antibody [HL1522] (GTX636996) diluted at 1:100.

Antigen Retrieval: Citrate buffer, pH 6.0, 15 min

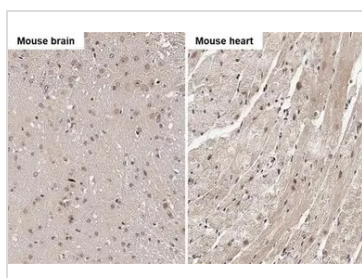
**GTX636996 ICC/IF Image**

RGS4 antibody [HL1522] detects RGS4 protein at cytoplasm by immunofluorescent analysis.

Sample: SH-SY-5Y cells were fixed in 4% paraformaldehyde at RT for 15 min.

Green: RGS4 stained by RGS4 antibody [HL1522] (GTX636996) diluted at 1:500.

Blue: Fluoroshield with DAPI (GTX30920).

**GTX636996 IHC-P Image**

RGS4 antibody [HL1522] detects RGS4 protein by immunohistochemical analysis.

Sample: Paraffin-embedded mouse tissues.

RGS4 stained by RGS4 antibody [HL1522] (GTX636996) diluted at 1:100.

Antigen Retrieval: Citrate buffer, pH 6.0, 15 min



For full product information, images and publications, please visit our [website](https://www.genetex.com).