

GAD67 antibody [HL1095]

Cat. No. GTX636279

Host	Rabbit
Clonality	Monoclonal
Isotype	IgG
Application	WB, ICC/IF, IHC-P
Reactivity	Human, Mouse, Rat, Cat, Dog

Package
100 µl, 25 µl

APPLICATION

Application Note

*Optimal dilutions/concentrations should be determined by the researcher.

Suggested dilution	Recommended dilution
WB	Assay dependent
ICC/IF	1:100-1:1000
IHC-P	Assay dependent

Not tested in other applications.

Calculated MW 67 kDa. ([Note](#))

Product Note This antibody is specific for GAD67 protein, and it does not cross-react with GAD65 protein.

PROPERTIES

Form	Liquid
Buffer	PBS
Preservative	No Preservative
Storage	Store as concentrated solution. Centrifuge briefly prior to opening vial. For short-term storage (1-2 weeks), store at 4°C. For long-term storage, aliquot and store at -20°C or below. Avoid multiple freeze-thaw cycles.
Concentration	1 mg/ml (Please refer to the vial label for the specific concentration.)
Immunogen	Recombinant protein encompassing a sequence within the center region of human GAD67. The exact sequence is proprietary.
Purification	Affinity purified by Protein A.
Conjugation	Unconjugated

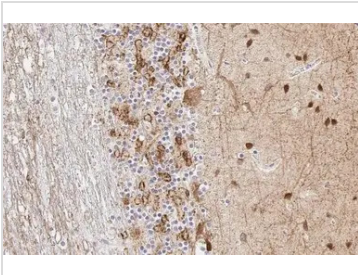


For full product information, images and publications, please visit our [website](#).

For laboratory research use only. Not for any clinical, therapeutic, or diagnostic use in humans or animals. Not for animal or human consumption.

Note
 Purchasers shall not, and agree not to enable third parties to, analyze, copy, reverse engineer or otherwise attempt to determine the structure or sequence of the product.

DATA IMAGES



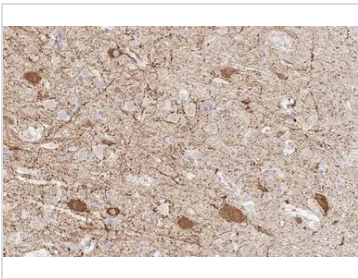
GTX636279 IHC-P Image

GAD67 antibody [HL1095] detects GAD67 protein at cell membrane and cytoplasm by immunohistochemical analysis.

Sample: Paraffin-embedded cat cerebellum.

GAD67 stained by GAD67 antibody [HL1095] (GTX636279) diluted at 1:100.

Antigen Retrieval: Citrate buffer, pH 6.0, 15 min



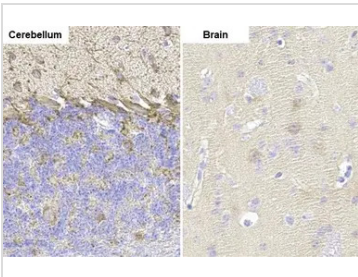
GTX636279 IHC-P Image

GAD67 antibody [HL1095] detects GAD67 protein at cell membrane and cytoplasm by immunohistochemical analysis.

Sample: Paraffin-embedded dog cerebellum.

GAD67 stained by GAD67 antibody [HL1095] (GTX636279) diluted at 1:100.

Antigen Retrieval: Citrate buffer, pH 6.0, 15 min



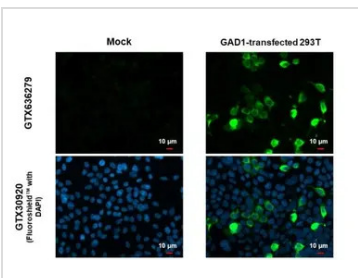
GTX636279 IHC-P Image

GAD67 antibody [HL1095] detects GAD67 protein by immunohistochemical analysis.

Sample: Paraffin-embedded mouse tissues.

GAD67 stained by GAD67 antibody [HL1095] (GTX636279) diluted at 1:100.

Antigen Retrieval: Citrate buffer, pH 6.0, 15 min



GTX636279 ICC/IF Image

GAD67 antibody [HL1095] detects GAD67 protein at cytoplasm by immunofluorescent analysis.

Sample: Mock and transfected 293T cells were fixed in 4% paraformaldehyde at RT for 15 min.

Green: GAD67 stained by GAD67 antibody [HL1095] (GTX636279) diluted at 1:500.

Blue: Fluoroshield with DAPI (GTX30920).



For full product information, images and publications, please visit our [website](#).