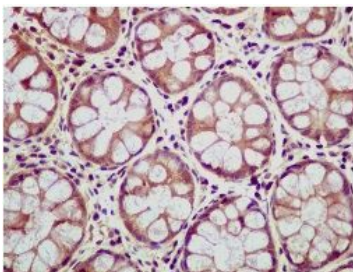




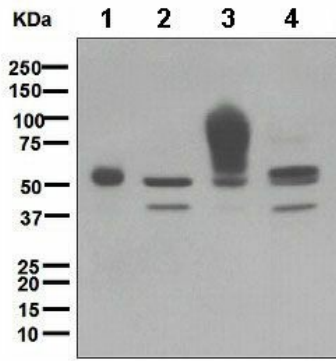
Catalog Number	GTX62668	Package: 100 µl
Product Name	CEACAM6 antibody [EPR4403]	
Full Name	carcinoembryonic antigen-related cell adhesion molecule 6 (non-specific cross reacting antigen)	
Synonyms	CEAL Antibody , NCA Antibody , carcinoembryonic antigen-related cell adhesion molecule 6 (non-specific cross reacting antigen) Antibody , CEACAM6 Antibody	
Product Description	Rabbit monoclonal antibody [EPR4403] to CEACAM6	
Background	Carcinoembryonic antigen (CEA; MIM 114890) is one of the most widely used tumor markers in serum immunoassay determinations of carcinoma. An apparent lack of absolute cancer specificity for CEA probably results in part from the presence in normal and neoplastic tissues of antigens that share antigenic determinants with the 180-kD form of CEA (Barnett et al., 1988 [PubMed 3220478]). For background information on the CEA family of genes, see CEACAM1 (MIM 109770).[supplied by OMIM, Mar 2008]	
Host	Rabbit	
Clonality	Monoclonal	
Clone Name	EPR4403	
Isotype	IgG	
Target	CD66c	
Immunogen	The immunogen corresponding to a region within amino acids 150 and 250 of human CEACAM6.	
Antigen Species	Human	
Species Reactivity	Human, Mouse, Rat	
Applications	IHC-P, IP, WB	
Form Supplied	Liquid	
Purification	Tissue culture supernatant	
Storage Buffer	pH: 7.4, Preservative: 0.01% Sodium azide. Constituents: 50% Glycerol, 0.05% BSA	
Storage Instruction	Store at -20°C. Stable for 12 months at -20°C	
Notes	For <i>In vitro</i> laboratory use only. Not for any clinical, therapeutic, or diagnostic use in humans or animals. Not for animal or human consumption. RabMAb® technology is covered by the following U.S. Patents, No. 5,675,063 and/or 7,429,487.	
ResearchArea	Cancer > Tumor biomarkers Immunology > CD marker	





GTX62668 IHC-P Image

IHC-P analysis of human colon tissue using CEACAM6 antibody [EPR4403] at a dilution of 1:100.



GTX62668 WB Image

WB analysis of (1) human placenta, (2) JAR, (3) HT29 and (4) MCF7 lysates (10 µg per lane) using CEACAM6 antibody [EPR4403] at a dilution of 1:10,000.