

Histone H2A.X Antibody

Rabbit Polyclonal antibody to Histone H2A.X

Catalog Number **GTX50581**

Full Name H2A histone family, member X

Synonyms | H2AX | H2A.X | H2AX | H2AFX | H2AX histone | histone H2Ax | H2A histone family, member X |

Background Variant histone H2A which replaces conventional H2A in a subset of nucleosomes. Nucleosomes wrap and compact DNA into chromatin, limiting DNA accessibility to the cellular machineries which require DNA as a template. Histones thereby play a central role in transcription regulation, DNA repair, DNA replication and chromosomal stability. DNA accessibility is regulated via a complex set of post-translational modifications of histones, also called histone code, and nucleosome remodeling. Required for checkpoint-mediated arrest of cell cycle progression in response to low doses of ionizing radiation and for efficient repair of DNA double strand breaks (DSBs) specifically when modified by C-terminal phosphorylation

Host Rabbit

Clonality Polyclonal

Immunogen Peptide sequence around aa.137~141 (Q-A-S-Q-E) derived from Human Histone H2A.X

Antigen Species Human

Cross Reactivity Human - Not yet tested in other species.

Applications ICC/IF, Immunohistochemistry, Western blot. The usefulness of this product in other applications has not been determined.

Application Note Suggested starting dilutions are as follows. WB: 1:500~1:1000, IHC-P: 1:50~1:100, ICC/IF: 1:100~1:200. Not yet tested in other applications. Optimal working dilutions should be determined experimentally by the end user.

Target Histone H2A.X

Predicted Target Size(KDa) 15

Form Supplied Liquid

Concentration 1 mg/ml

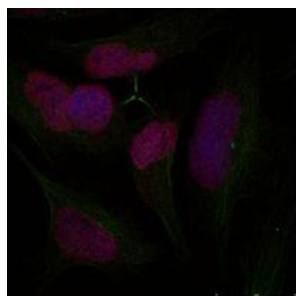
Purification Antibodies were purified by affinity-chromatography using epitope-specific peptide.

Storage Buffer saline (without Mg²⁺ and Ca²⁺), pH 7.4, 150mM NaCl, 0.02% sodium azide and 50% glycerol.

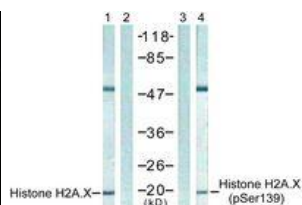
Storage Instruction Keep as concentrated solution. Aliquot and store at -20°C or below. Avoid multiple freeze-thaw cycles.

Notes For In vitro laboratory use only. Not for any clinical, therapeutic, or diagnostic use in humans or animals. Not for animal or human consumption.

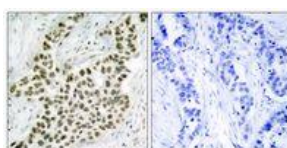
If you use this product in your publication, please refer to GeneTex and quote the catalog number GTX50581. Please let us know about your publication so that we can update this datasheet to list your paper. Thanks!



Immunofluorescence staining of methanol-fixed HeLa cells using Histone H2A.X Antibody (GTX50581).



Western blot analysis of extracts from HepG2 and 293 cells using Histone H2A.X Antibody (GTX50581).



Immunohistochemical analysis of paraffin-embedded human breast carcinoma tissue using Histone H2A.X Antibody (GTX50581) (left) or the same antibody preincubated with blocking peptide (right).

ALL PRODUCTS ARE FOR IN VITRO RESEARCH USE ONLY AND ARE NOT FOR DIAGNOSTIC OR THERAPEUTIC PURPOSES. For product guarantee and other terms and conditions please visit www.genetex.com under "Company Policy"