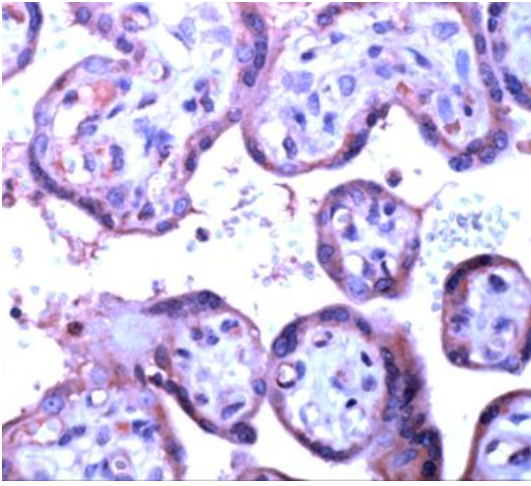




Catalog Number	GTX15291	Package:500 µl
Product Name	VEGFR-2 antibody	
Full Name	kinase insert domain receptor (a type III receptor tyrosine kinase)	
Synonyms	P35968, 3791, KDR, VEGFR2, 191306, VEGF receptor 2, FLK1, VEGF receptor2, VEGFR	
Product Description	Rabbit polyclonal antibody to VEGFR-2	
Background	VEGF receptor 2 is a member of a receptor tyrosine kinase family whose activation plays an essential role in a large number of biological processes such as embryonic development, wound healing, cell proliferation, migration and differentiation. Like other growth factor receptors, upon ligand binding VEGF receptor 2 dimerises and is autophosphorylated on multiple tyrosine residues. These sites can be involved in the regulation of kinase activity or serve as binding sites for SH2 and phosphotyrosine binding containing signaling proteins. Phosphorylation of Tyrosines 1054 and 1059 in the activation loop is required for activation of VEGF receptor 2 and its intrinsic tyrosine kinase activity.	
Host	Rabbit	
Clonality	Polyclonal	
Isotype	IgG	
Target	VEGF receptor 2	
Immunogen	Synthetic peptide (unfortunately, the amino acid sequence is considered to be commercially sensitive) (Human) (C terminal).	
Antigen Species	Human	
Species Reactivity	Human, Mouse, Rat	
Applications	IHC-P, WB	
Application Note	IHC-P: Use at a dilution of 1/50. Perform enzymatic antigen retrieval before commencing with IHC staining protocol, by boiling tissue sections in 10mM citrate buffer, pH 6.0 for 10 min followed by cooling at RT for 20 min. WB: Use at an assay dependent dilution. Predicted molecular weight: 163 kDa. Not tested in other applications. Optimal dilutions/concentrations should be determined by the end user.	
Positive Controls	Angiosarcoma	
Cellular Localization	Type I membrane protein	
Form Supplied	Liquid	
Purification	Immunogen affinity purified	
Concentration	0.2 mg/ml (Please refer to the vial label for the specific concentration)	
Storage Buffer	Phosphate-buffered saline, pH 7.4 containing 1% BSA and 0.09% sodium azide	
Storage Instruction	Keep as concentrated solution, aliquot and store at 4°C. Do not freeze.	
Notes	For <i>In vitro</i> laboratory use only. Not for any clinical, therapeutic, or diagnostic use in humans or animals. Not for animal or human consumption.	
ResearchArea	Cancer > Angiogenesis Cancer > Apoptosis > Metastasis and Invasion > Invasion Cancer > Type of cancer > Breast > Other	





GTX15291 IHC-P Image

Human Placenta stained with anti-FLK-1/KDR/VEGFR-2 antibody