

Human Papillomavirus type 16 E7 protein, His tag

Cat. No. GTX133411-pro

Application	ELISA, Lateral Flow, Sandwich ELISA
Species	Human papillomavirus type 16

Package
100 µg

APPLICATION

Application Note

For Sandwich ELISA, we would recommend the following pairs :

Capture : GTX637546 / GTX637228, Detection : GTX637228 / GTX637546.

Please notice that GTX637228 / GTX637546 needs to be conjugated to HRP to function as the detection antibody when paired with GTX637546 / GTX637228. Please contact us for custom HRP-conjugated antibody.

For Lateral Flow, we would recommend the following pairs :

Capture : GTX637228, Detection : GTX637546

PROPERTIES

Form	Liquid
Buffer	PBS, 0.1% SDS
Preservative	No preservative
Storage	Store as concentrated solution. Centrifuge briefly prior to opening vial. Aliquot and store at -20°C or below. Avoid multiple freeze-thaw cycles.
Concentration	2 mg/ml (Please refer to the vial label for the specific concentration.)
Region/Sequence	Full length protein of Human Papilloma virus type 16 E7 protein
Expression System	E. Coli
Purity	>95%
Conjugation	Unconjugated

Note

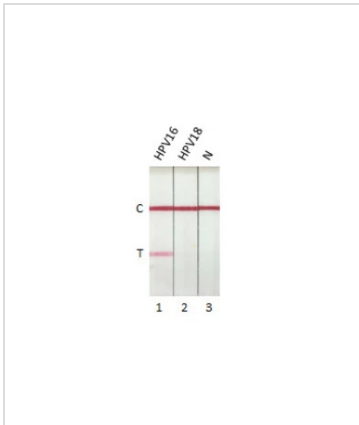
For laboratory research use only. Not for any clinical, therapeutic, or diagnostic use in humans or animals. Not for animal or human consumption.

Purchasers shall not, and agree not to enable third parties to, analyze, copy, reverse engineer or otherwise attempt to determine the structure or sequence of the product.



For full product information, images and publications, please visit our [website](#).

DATA IMAGES



GTX133411-pro Image

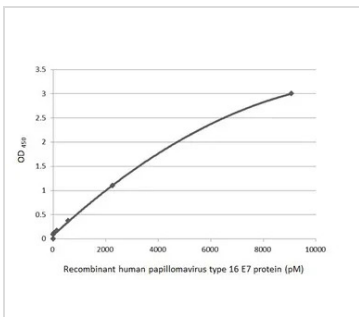
Detection of Human Papillomavirus type 16 E7 protein by lateral flow assay using the monoclonal antibody pair.

Capture: Human Papillomavirus type 16 E7 antibody (GTX637228 [HL1647])

Detection: Human Papillomavirus type 16 E7 antibody (GTX637546 [HL1821])

Samples (10 ng) :

1. HPV16 E7 protein (GTX133411-pro)
2. HPV18 E7 protein (GTX133412-pro)
3. Lysis buffer



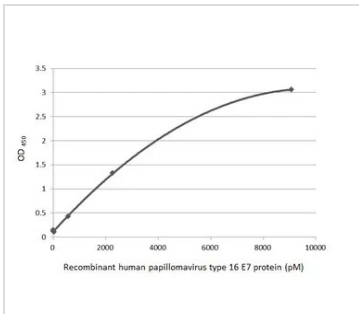
GTX133411-pro Image

Sandwich ELISA detection of recombinant Human Papillomavirus type 16 E7 protein, His tag (GTX133411-pro) using antibodies as below.

Capture: Human Papillomavirus type 16 E7 antibody [HL1647] (GTX637228) (5 µg/mL)

Detection: HRP-conjugated Human Papillomavirus type 16 E7 antibody [HL1821] (GTX637546) (1 µg/mL)

Please notice that GTX637546 needs to be conjugated to HRP to function as the detection antibody when paired with GTX637228. Please contact us for custom HRP-conjugated antibody.



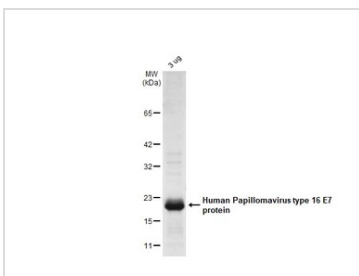
GTX133411-pro Image

Sandwich ELISA detection of recombinant Human Papillomavirus type 16 E7 protein, His tag (GTX133411-pro) using antibodies as below.

Capture: Human Papillomavirus type 16 E7 antibody [HL1821] (GTX637546) (5 µg/mL)

Detection: HRP-conjugated Human Papillomavirus type 16 E7 antibody [HL1647] (GTX637228) (1 µg/mL)

Please notice that GTX637228 needs to be conjugated to HRP to function as the detection antibody when paired with GTX637546. Please contact us for custom HRP-conjugated antibody.



GTX133411-pro Image

GTX133411-pro Human Papillomavirus type 16 E7 protein was analyzed using SDS-PAGE and stained with coomassie blue and captured by monochrome camera.



For full product information, images and publications, please visit our [website](#).