



Catalog Number GTX124204 **Package:** 100 µl, 25 µl

Proclin

Product Name TET2 antibody [N2], N-term

Full Name tet oncogene family member 2

Synonyms FLJ20032 antibody, KIAA1546 antibody, MGC125715 antibody, TET2 antibody, probable methylcytosine dioxygenase TET2 antibody, methylcytosine dioxygenase TET2 antibody, tet oncogene family member 2 antibody

Product Description Rabbit Polyclonal antibody to TET2 (tet oncogene family member 2)

Host Rabbit

Clonality Polyclonal

Isotype IgG

Immunogen Recombinant fragment contain a sequence corresponding to a region within amino acids 429 and 656 of TET2

Antigen Species Human

Species Reactivity Human

Applications ICC/IF, WB, ChIP assay

Application Note

	Suggested dilution	Protocol	Reference
ChIP assay	*		
ICC/IF	1:100-1:1000*		
Western blot	1:1000-1:10000*		

Not tested in other applications.

*Optimal dilutions/concentrations should be determined by the researcher.

Positive Controls human TET2-transfected 293T cells

Predicted Target Size 224 kDa

Form Supplied Liquid

Purification Purified by antigen-affinity chromatography.

Preservative Proclin

PreservativeConc 0.025%

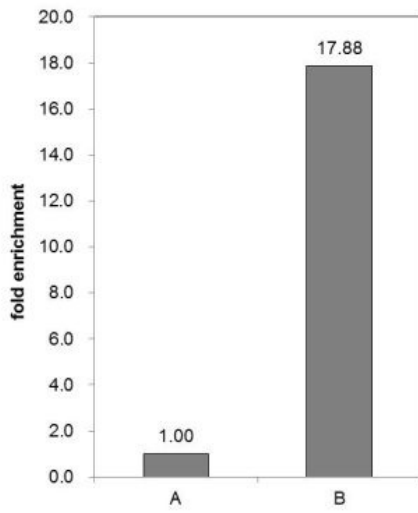
Concentration 1 mg/ml

Storage Buffer 0.025% proclin/ 20% Glycerol in PBS

Storage Instruction Keep as concentrated solution. Aliquot and store at -20°C or below. Avoid multiple freeze-thaw cycles.

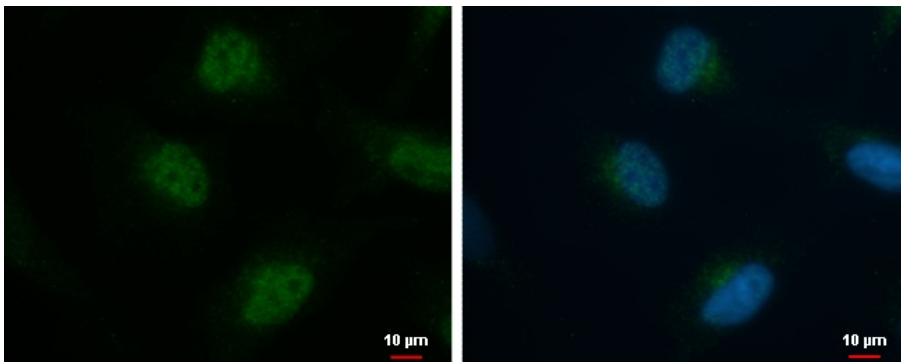
Notes For *In vitro* laboratory use only. Not for any clinical, therapeutic, or diagnostic use in humans or animals. Not for animal or human consumption.

ResearchArea [Cancer](#) > [Type of cancer](#) > [Leukemia](#) > [Myeloid](#) > [AML](#)
[Cancer](#) > [Type of cancer](#) > [Leukemia](#) > [Myelomonocytic](#)
[Cancer](#) > [Type of cancer](#) > [Prostate cancer](#)



GTX124204 TET2 antibody [N2], N-term ChIP Image

Cross-linked ChIP was performed with U2OS chromatin extract and 5 µg of either normal rabbit IgG (A) or anti-TET2 antibody (B). The precipitated DNA was detected by PCR with primer set targeting to CCND2 (A and B).



GTX124204 TET2 antibody [N2], N-term ICC/IF Image

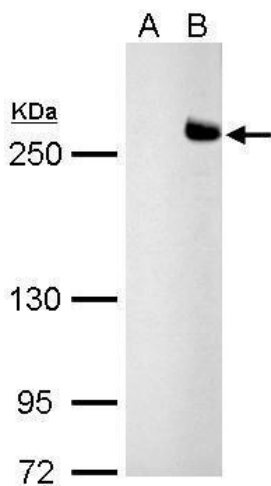
TET2 antibody [N2], N-term detects TET2 protein at nucleus by immunofluorescent analysis.

Sample: HeLa cells were fixed in 4% paraformaldehyde at RT for 15 min.

Green: TET2 protein stained by TET2 antibody [N2], N-term (GTX124204) diluted at 1:500.

Blue: Hoechst 33342 staining.

Scale bar = 10 µm.



GTX124204_41241_WB_B.jpg

TET2 antibody [N2], N-term detects TET2 protein by Western blot analysis.

A. 30 µg 293T whole cell lysate/extract

B. 30 µg whole cell lysate/extract of human TET2-transfected 293T cells

5 % SDS-PAGE

TET2 antibody [N2], N-term (GTX124204) dilution: 1:5000