



**Catalog Number** GTX115045 **Package:**25 µl, 100 µl

Proclin

**Product Name** 6x His antibody

**Synonyms** His, 6x His, 6x his tag, His Tag, 6xHis Tag, 6 x His

**Product Description** Rabbit Polyclonal antibody to 6x His

**Host** Rabbit

**Clonality** Polyclonal

**Isotype** IgG

**Species Reactivity** Other

**Applications** ELISA, IP, WB

**Application Note** Suggested starting dilutions for the 6x his tag antibody are as follows: WB: 1:1000-1:10000, IP: 1:500, ELISA. Not yet tested in other applications. Optimal working dilutions should be determined experimentally by the end user.

**Positive Controls** His-tagged recombinant protein

**Form Supplied** Liquid

**Purification** Purified by antigen-affinity chromatography.

**Preservative** Proclin

**PreservativeConc** 0.025%

**Concentration** 1 mg/ml

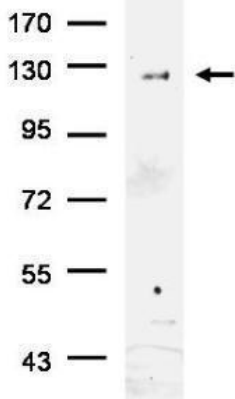
**Storage Buffer** 0.025% proclin/ 20% Glycerol in PBS

**Storage Instruction** Keep as concentrated solution. Aliquot and store at -20°C or below. Avoid multiple freeze-thaw cycles.

**Notes** For *In vitro* laboratory use only. Not for any clinical, therapeutic, or diagnostic use in humans or animals. Not for animal or human consumption.

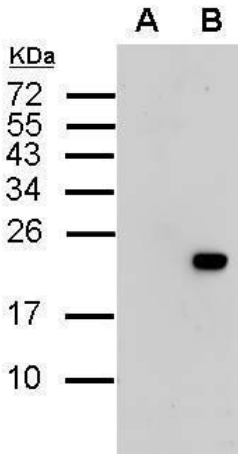
**ResearchArea** [Epitope Tag > 6x His](#)

**KDa**



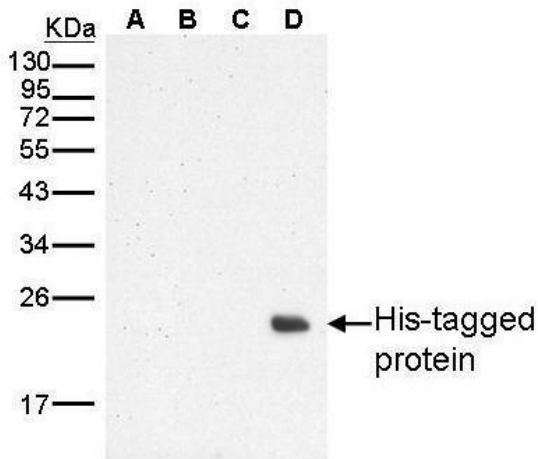
### GTX115045 IP Image

His-tagged protein was immunoprecipitated from transfected cells using 8 ug of His tag antibody (GTX115045). The precipitated His-tagged protein was detected by GTX115045 diluted at 1:500, and used EasyBlot anti-rabbit IgG (GTX221666-01) as secondary reagent.



### GTX115045\_40863\_WB.jpg

Western blot analysis of extracts from untransfected control cells and transfected cells overexpressing His-tagged protein (~19 kDa), using His-tag antibody. A: 10ug E.coli Lysate harbouring His-tagged recombinant protein (N-terminal linked), non-induced (10 ug). B: 10ug E.coli Lysate harbouring His-tagged recombinant protein (N-terminal linked), induced (10 ug).



### GTX115045\_WB.jpg

Sample

A: 10 ug of non-transformed E. coli lysate

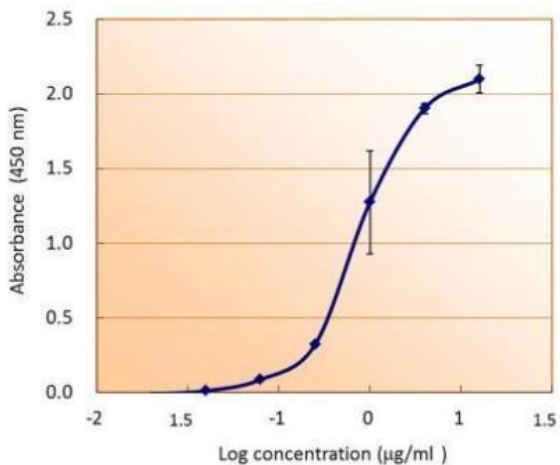
B: 10ug of non-transformed E. coli lysate, induced

C: 10ug E.coli Lysate harbouring His-tagged recombinant protein (N-terminal linked), non-induced

D: 10ug E.coli Lysate harbouring His-tagged recombinant protein (N-terminal linked), induced

12% SDS PAGE

GTX115045 diluted at 1:1000



### GTX115045\_40863\_ELISA.jpg

6x His antibody detects His-tagged recombinant proteins by indirect ELISA analysis. Various dilutions of His-tagged recombinant proteins coated onto the 96-well plate were detected by using 2.5 µg/ml 6x His antibody (GTX115045). Bound Abs were further detected by using HRP-conjugated goat anti-rabbit IgG (GTX213110-01) with HRP substrates.