



**Catalog Number** GTX113116 **Package:** 25 µl, 100 µl

Proclin

**Product Name** alpha Actinin 4 antibody [N1N2], N-term

**Full Name** actinin, alpha 4

**Synonyms** ACTININ-4 antibody, DKFZp686K23158 antibody, FSGS antibody, FSGS1 antibody, ACTN4 antibody, focal segmental glomerulosclerosis 1 antibody, F-actin cross-linking protein antibody, non-muscle alpha-actinin 4 antibody, alpha-actinin-4 antibody, actinin alpha4 isoform antibody, actinin, alpha 4 antibody

**Product Description** Rabbit Polyclonal antibody to alpha Actinin 4 (actinin, alpha 4)

**Background** Alpha actinins belong to the spectrin gene superfamily which represents a diverse group of cytoskeletal proteins, including the alpha and beta spectrins and dystrophins. Alpha actinin is an actin-binding protein with multiple roles in different cell types. In nonmuscle cells, the cytoskeletal isoform is found along microfilament bundles and adherens-type junctions, where it is involved in binding actin to the membrane. In contrast, skeletal, cardiac, and smooth muscle isoforms are localized to the Z-disc and analogous dense bodies, where they help anchor the myofibrillar actin filaments. This gene encodes a nonmuscle, alpha actinin isoform which is concentrated in the cytoplasm, and thought to be involved in metastatic processes. Mutations in this gene have been associated with focal and segmental glomerulosclerosis. [provided by RefSeq]

**Host** Rabbit

**Clonality** Polyclonal

**Isotype** IgG

**Immunogen** Recombinant fragment corresponding to a region within amino acids 20 and 266 of alpha Actinin 4 (Uniprot ID#O43707)

**Antigen Species** Human

**Species Reactivity** Human, Mouse, Rat

**Predicted Cross Reactivity species** Rhesus Monkey, Bovine

**Predict Reactivity Note** Rhesus Monkey (100%), Bovine (100%)

**Applications** ICC/IF, WB

Application Note	Suggested dilution	Protocol	Reference
	ICC/IF	1:100-1:1000*	
	Western blot	1:500-1:3000*	
	Not tested in other applications.		

\*Optimal dilutions/concentrations should be determined by the researcher.

**Positive Controls** A431 , NIH-3T3 , JC , PC-12

**Predicted Target Size** 105 kDa

**Cellular Localization** Nucleus , Cytoplasm

**Form Supplied** Liquid

**Purification** Purified by antigen-affinity chromatography.

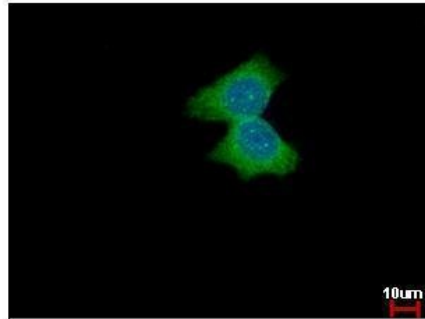
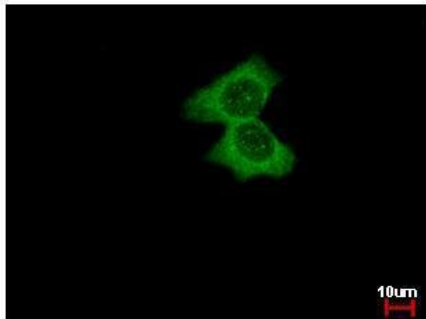
**Concentration** 0.5 mg/ml

**Storage Buffer** 1XPBS, 20% Glycerol (pH7). 0.025% proclin was added as a preservative.

**Storage Instruction** Keep as concentrated solution. Aliquot and store at -20°C or below. Avoid multiple freeze-thaw cycles.

**Notes** For *In vitro* laboratory use only. Not for any clinical, therapeutic, or diagnostic use in humans or animals. Not for animal or human consumption.

**ResearchArea** [Cancer](#) > [Hypoxia](#)



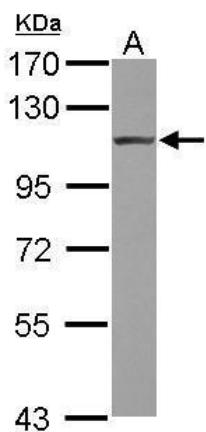
#### GTX113116 alpha Actinin 4 antibody [N1N2], N-term ICC/IF Image

alpha Actinin 4 antibody [N1N2], N-term detects ACTN4 protein at cytoplasm by immunofluorescent analysis.

Sample: MCF-7 cells were fixed in ice-cold MeOH for 5 min.

Green: ACTN4 protein stained by alpha Actinin 4 antibody [N1N2], N-term (GTX113116) diluted at 1:500.

Blue: Hoechst 33342 staining.



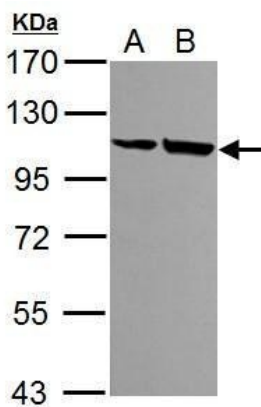
#### GTX113116\_40499\_WB.jpg

Sample (30 ug of whole cell lysate)

A: A431

7.5% SDS PAGE

GTX113116 diluted at 1:1000



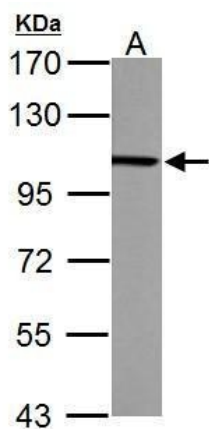
#### GTX113116\_40499\_WB\_M.jpg

Sample (30 ug of whole cell lysate)

A: NIH-3T3

B: JC

7.5% SDS PAGE  
GTX113116 diluted at 1:1000



**GTX113116\_40499\_WB\_R.jpg**

alpha Actinin 4 antibody [N1N2], N-term detects ACTN4 protein by Western blot analysis.

A. 30 µg PC-12 whole cell lysate/extract

7.5 % SDS-PAGE

alpha Actinin 4 antibody [N1N2], N-term (GTX113116) dilution: 1:1000