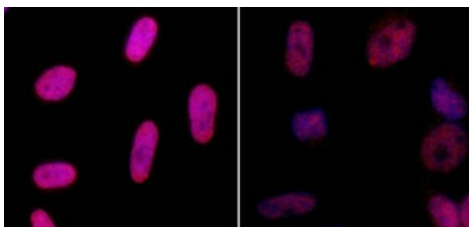


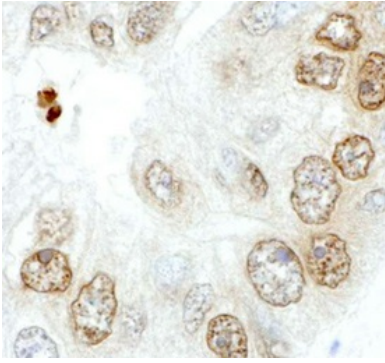


Catalog Number	GTX11174	Package:50 µg
Product Name	H2A.X(phospho Ser139) antibody	
Full Name	H2A histone family, member X	
Synonyms	P16104, H2AX, H2AFX, 601772, 3014, H2A/X, H2A.X, H2A.X(phospho S139), H2A.X(phospho Ser139), H2A.X(pS139), H2A.X(pSer139), H2A.X.phospho S139, H2A.X.phospho Ser139, Phospho H2A.X(S139), Phospho H2A.X(Ser139), Phospho H2A.X(pS139), Phospho H2A.X(pSer139)	
Product Description	Rabbit polyclonal to gamma H2A.X(phospho S139)	
Background	H2AX is a member of the histone H2A family, 1 of 5 families of histone proteins involved in nucleosomal organization of chromatin.	
Host	Rabbit	
Clonality	Polyclonal	
Isotype	IgG	
Target	H2A.X	
Immunogen	Synthetic phospho-peptide, which represents a portion of the C-terminus of human histone H2AX surrounding phosphorylated serine 139 (LocusLink ID 3014).	
Antigen Species	Human	
Species Reactivity	Human, Mouse	
Applications	ICC/IF, IHC, WB	
Application Note	IF: Use at a dilution of 1/400 - 1/800. WB: Use at a dilution of 1/5000 - 1/15000. Detects a band of approximately 15 kDa. Is unsuitable for IP. Not tested in other applications. Optimal dilutions/concentrations should be determined by the end user.	
Positive Controls	Human HEK293, human G-361 and mouse embryonic fibroblast cells	
Cellular Localization	Nuclear	
Form Supplied	Liquid	
Purification	Immunogen affinity purified	
Purification Note	Antibodies were affinity purified using the peptide immobilized on solid support.	
Concentration	1 mg/ml	
Storage Buffer	Preservative: 0.1% Sodium Azide; Constituents: Tris-citrate/phosphate. pH 7-8	
Storage Instruction	Keep as concentrated solution, aliquot and store at 4°C. Do not freeze.	
ResearchArea	Cancer > DNA repair > Double-strand break repair > Homologous recombination Cancer > DNA repair > Regulation > Positive regulation Cancer > Type of cancer > Breast > Other	



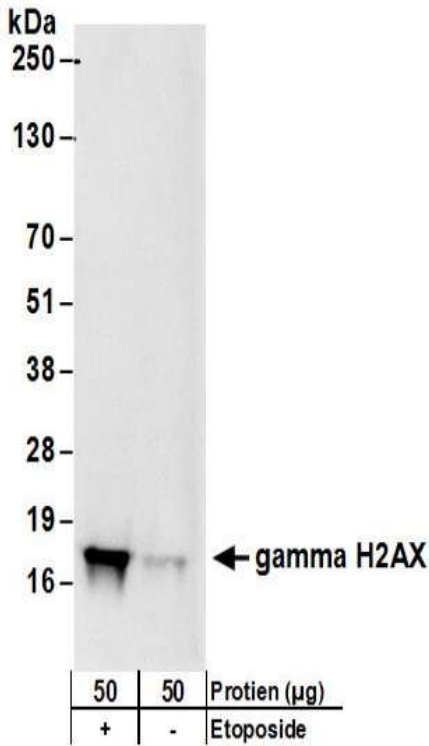
GTX11174 ICC/IF Image

Samples: Neocarzinostatin treated asynchronous HeLa cells (left) and untreated asynchronous HeLa cells (right) . Antibody: Affinity purified rabbit anti-gamma-H2AX (GTX11174) used at a dilution of 1:5,000 (0.2µg/ml). Detection: Red fluorescent Anti-rabbit IgG-DyLight® 594 conjugated used at a dilution of 1:100



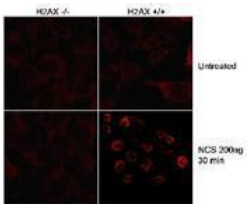
GTX11174 IHC Image

Sample: FFPE section of human ovarian carcinoma. Antibody:Affinity purified rabbit anti-gamma-H2AX (GTX11174) used at a dilution of 1:5,000 (0.2µg/ml). Detection: DAB



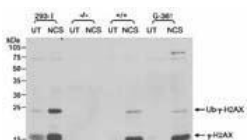
GTX11174 WB Image

Samples: Whole cell lysate (50 µg) from 293T cells that were mock treated (-) or treated with Etoposide (100 µM, 2h). Antibody: Affinity purified rabbit anti-gamma-H2AX antibody (GTX11174) used at 0.1 µg/ml. Detection: Chemiluminescence with an exposure time of 3 seconds.



GTX11174 ICC/IF Image

Detection of gamma-H2AX by Immunofluorescence. Samples: Wildtype (H2AX +/+) or H2AX knockout (H2AX -/-) mouse embryonic fibroblasts. Antibody: Affinity purified GTX11174 used at 2µg/ml. Detection: Rhodamine red labelled goat anti-rabbit IgG.



GTX11174 WB Image

Nuclear extract (50 g) from human HEK293, human melanoma (G361), mouse wildtype embryonic fibroblasts (+/+) or mouse H2AX knockout embryonic fibroblasts (-/-).
Antibody: GTX11174 used at 0.1g/ml. Detection: Chemiluminescence with 30 second exposure.