

Ezrin antibody [N2C2], Internal

Cat No. GTX111709

Host	Rabbit
Clonality	Polyclonal
Isotype	IgG
Application	WB, ICC/IF, IHC-P
Reactivity	Human, Mouse, Rat

Reference (5)

Package

100 µl, 25 µl

APPLICATION

Application Note

*Optimal dilutions/concentrations should be determined by the researcher.

Suggested dilution	Dilution
WB	1:5000-1:20000
ICC/IF	1:100-1:1000
IHC-P	1:100-1:1000

Not tested in other applications.

Calculated MW 69 kDa. ([Note](#))

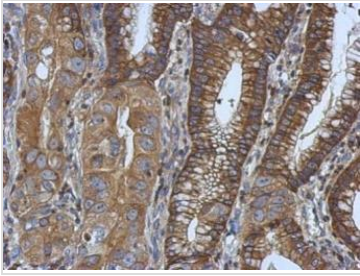
PROPERTIES

Form	Liquid
Buffer	1XPBS (pH7), 20% Glycerol
Preservative	0.025% ProClin 300
Storage	Store as concentrated solution. Centrifuge briefly prior to opening vial. For short-term storage (1-2 weeks), store at 4°C. For long-term storage, aliquot and store at -20°C or below. Avoid multiple freeze-thaw cycles.
Concentration	1.84 mg/ml (Please refer to the vial label for the specific concentration.)
Immunogen	Recombinant protein encompassing a sequence within the center region of human Ezrin. The exact sequence is proprietary.
Purification	Purified by antigen-affinity chromatography.
Conjugation	Unconjugated
Note	For laboratory use only. Not for any clinical, therapeutic, or diagnostic use in humans or animals. Not for animal or human consumption.



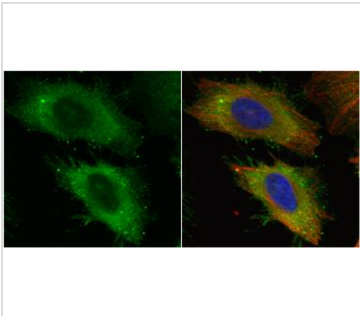
For full product information, images and publications, please visit our [website](#).

DATA IMAGES

**GTX111709 IHC-P Image**

Immunohistochemical analysis of paraffin-embedded human colon carcinoma, using Ezrin(GTX111709) antibody at 1:500 dilution.

Antigen Retrieval: Trilogy™ (EDTA based, pH 8.0) buffer, 15min

**GTX111709 ICC/IF Image**

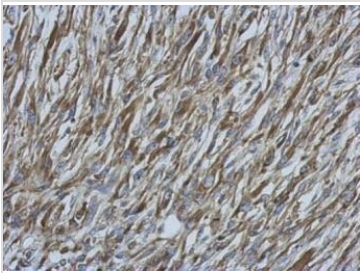
Ezrin antibody [N2C2], Internal detects Ezrin protein at cytoplasm by immunofluorescent analysis.

Sample: HeLa cells were fixed in 4% paraformaldehyde at RT for 15 min.

Green: Ezrin protein stained by Ezrin antibody [N2C2], Internal (GTX111709) diluted at 1:1000.

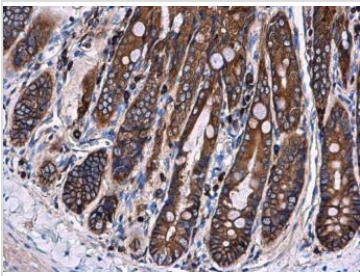
Red: alpha Tubulin, a cytoskeleton marker, stained by alpha Tubulin antibody [GT114] (GTX628802) diluted at 1:1000.

Blue: Hoechst 33342 staining.

**GTX111709 IHC-P Image**

Immunohistochemical analysis of paraffin-embedded C2C12 xenograft, using Ezrin(GTX111709) antibody at 1:500 dilution.

Antigen Retrieval: Trilogy™ (EDTA based, pH 8.0) buffer, 15min

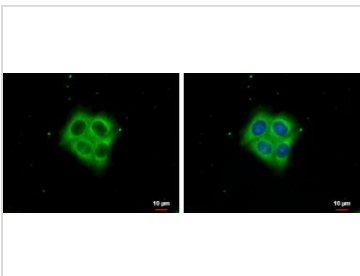
**GTX111709 IHC-P Image**

Ezrin antibody [N2C2], Internal detects Ezrin protein at cytoplasm and membrane in rat duodenum by immunohistochemical analysis.

Sample: Paraffin-embedded rat duodenum.

Ezrin antibody [N2C2], Internal (GTX111709) diluted at 1:500.

Antigen Retrieval: Citrate buffer, pH 6.0, 15 min

**GTX111709 ICC/IF Image**

Ezrin antibody [N2C2], Internal detects Ezrin protein at cytoplasm by immunofluorescent analysis.

Sample: HCT116 cells were fixed in ice-cold MeOH for 5 min.

Green: Ezrin protein stained by Ezrin antibody [N2C2], Internal (GTX111709) diluted at 1:1000.

Blue: Hoechst 33342 staining.



For full product information, images and publications, please visit our [website](#).