



**Catalog Number** GTX111661 **Package:** 25 µl, 100 µl **Proclin** **Reference** (2)

**Product Name** MSH6 antibody [C1C2], Internal

**Full Name** mutS homolog 6 (E. coli)

**Synonyms** GTBP antibody, HNPCC5 antibody, HSAP antibody, MSH6 antibody, DNA mismatch repair protein Msh6 antibody, mutS-alpha 160 kDa subunit antibody, GTMBP antibody, sperm-associated protein antibody, p160 antibody, hMSH6 antibody, G/T mismatch-binding protein antibody, mutS homolog 6 (E. coli) antibody

**Product Description** Rabbit Polyclonal antibody to MSH6 (mutS homolog 6 (E. coli))

**Background** This gene encodes a protein similar to the MutS protein. In E. coli, the MutS protein helps in the recognition of mismatched nucleotides, prior to their repair. A highly conserved region of approximately 150 aa, called the Walker-A adenine nucleotide binding motif, exists in MutS homologs. The encoded protein of this gene combines with MSH2 to form a mismatch recognition complex that functions as a bidirectional molecular switch that exchanges ADP and ATP as DNA mismatches are bound and dissociated. Mutations in this gene have been identified in individuals with hereditary nonpolyposis colon cancer (HNPCC) and endometrial cancer. [provided by RefSeq]

**Host** Rabbit

**Clonality** Polyclonal

**Isotype** IgG

**Immunogen** Recombinant fragment corresponding to a region within amino acids 825 and 1110 of MSH6 (Uniprot ID#P52701)

**Antigen Species** Human

**Species Reactivity** Human, Mouse, zebrafish

**Applications** EMSA, ICC/IF, IHC-P, IP, WB

| Application Note                                | Suggested dilution | Protocol | Reference |
|---|--------------------|----------|-----------|
| Electrophoretic mobility shift assay            | *                  |          |           |
| ICC/IF  | 1:100-1:1000*      |          |           |
| IHC (Formalin-fixed paraffin-embedded sections) | 1:100-1:1000*      |          |           |
| Immunoprecipitation                             | 1:100-1:500*       |          |           |
| Western blot                                    | 1:500-1:3000*      |          |           |

Not tested in other applications.

\*Optimal dilutions/concentrations should be determined by the researcher.

**Positive Controls** HepG2 , Neuro2A , GL261

**Predicted Target Size** 153 kDa

**Cellular Localization** Nucleus

**Form Supplied** Liquid

**Purification** Purified by antigen-affinity chromatography.

**Concentration** 1.5 mg/ml

**Storage Buffer** 1XPBS, 20% Glycerol (pH7). 0.025% proclin was added as a preservative.

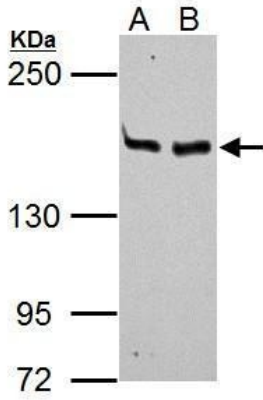
**Storage Instruction** Keep as concentrated solution. Aliquot and store at -20°C or below. Avoid multiple freeze-thaw cycles.

**Notes** For *In vitro* laboratory use only. Not for any clinical, therapeutic, or diagnostic use in humans or animals. Not for animal or human consumption.

**ResearchArea** [Cancer](#) > [Apoptosis](#) > [Induction](#) > [DNA damage sensors](#)

#### Application Reference

1. Inaguma S (2013) *Cancer Res* 7313-23
2. Hsu T (2010) *Chemosphere* 748-54



#### GTX111661\_40065\_WB\_M.jpg

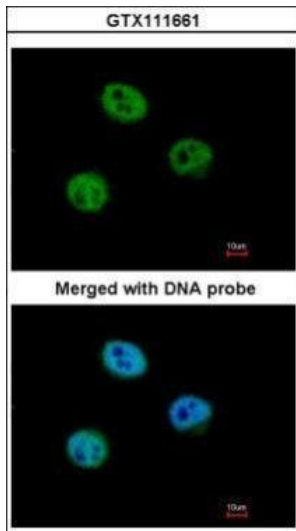
MSH6 antibody [C1C2], Internal detects MSH6 protein by Western blot analysis.

A. 30 µg Neuro2A whole cell lysate/extract

B. 30 µg GL261 whole cell lysate/extract

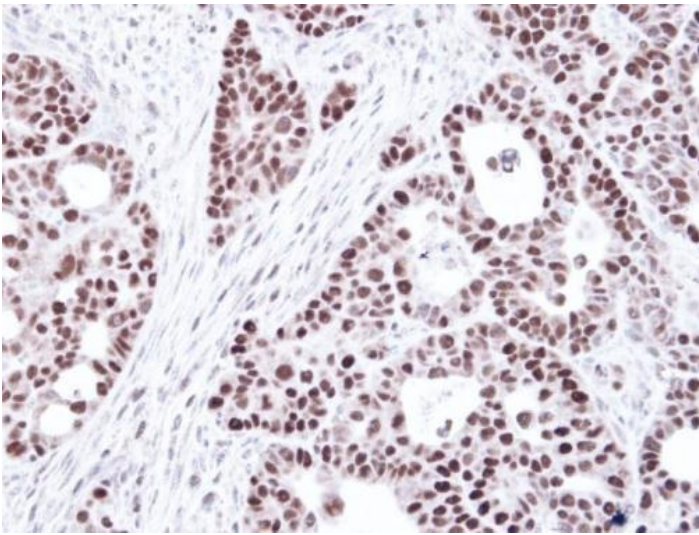
5% SDS-PAGE

MSH6 antibody [C1C2], Internal (GTX111661) dilution: 1:1000



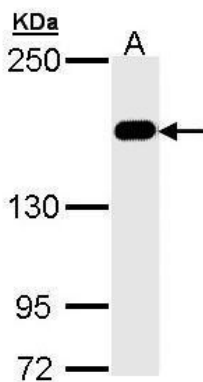
#### GTX111661\_IFA.jpg

Immunofluorescence analysis of paraformaldehyde-fixed HeLa, using GTBP (MSH6)(GTX111661) antibody at 1:500 dilution.



**GTX111661\_IHC.jpg**

Immunohistochemical analysis of paraffin-embedded NCIN87 Xenograft, using GTBP (MSH6)(GTX111661) antibody at 1:100 dilution.



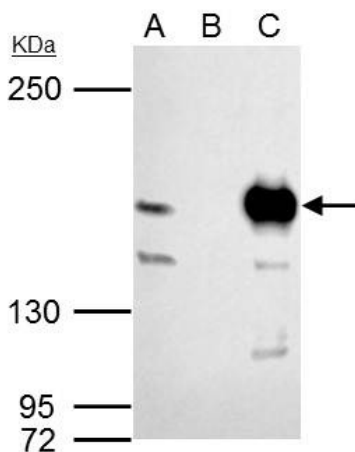
**GTX111661\_WB.jpg**

Sample (30 ug of whole cell lysate)

A: Hep G2 (GTX27900)

5% SDS PAGE

GTX111661 diluted at 1:1000



**GTX111661 MSH6 antibody [C1C2], Internal IP Image**

MSH6 antibody [C1C2], Internal immunoprecipitates MSH6 protein in IP experiments.

IP samples: 293T whole cell extract

A. 40 µg 293T whole cell extract

B. Control with 4 µg of preimmune Rabbit IgG

C. Immunoprecipitation of MSH6 protein by 4 µg MSH6 antibody [C1C2], Internal (GTX111661)

5% SDS-PAGE

The immunoprecipitated MSH6 protein was detected by MSH6 antibody [C1C2], Internal (GTX111661) diluted at 1:1000.

[EasyBlot anti-rabbit IgG (GTX221666-01) was used as a secondary reagent]

