

## EEA1 antibody [C3], C-term

Cat No. GTX109638

Host	Rabbit
Clonality	Polyclonal
Isotype	IgG
Application	WB, ICC/IF, IHC-P
Reactivity	Human, Mouse, Rat, Hamster

Reference ( 13 )

★★★★☆ Review ( 7 )

Package Size

100 µl, 25 µl

## APPLICATION

## Application Note

\*Optimal dilutions/concentrations should be determined by the researcher.

Suggested dilution	Dilution
WB	1:500-1:10000
ICC/IF	1:100-1:1000
IHC-P	1:100-1:1000

Not tested in other applications.

Calculated MW 162 kDa. ( [Note](#) )

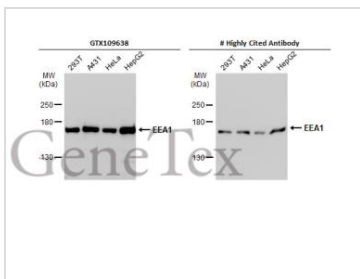
## PROPERTIES

Form	Liquid
Buffer	20% Glycerol in PBS
Preservative	0.025% ProClin 300
Storage	Store as concentrated solution. Centrifuge briefly prior to opening vial. For short-term storage (1-2 weeks), store at 4°C. For long-term storage, aliquot and store at -20°C or below. Avoid multiple freeze-thaw cycles.
Concentration	1 mg/ml (Please refer to the vial label for the specific concentration.)
Immunogen	Carrier-protein conjugated synthetic peptide encompassing a sequence within the C-terminus region of human EEA1. The exact sequence is proprietary.
Purification	Purified by antigen-affinity chromatography.
Conjugation	Unconjugated
Note	For laboratory use only. Not for any clinical, therapeutic, or diagnostic use in humans or animals. Not for animal or human consumption.



For full product information, images and publications, please visit our [website](#).

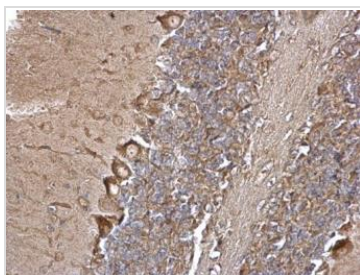
DATA IMAGES



**GTX109638 WB Image**

Various whole cell extracts (30 µg) were separated by 5% SDS-PAGE, and the membranes were blotted with EEA1 antibody [C3], C-term (GTX109638) diluted at 1:5000 and competitor's antibody diluted at 1:5000. The HRP-conjugated anti-rabbit IgG antibody (GTX213110-01) was used to detect the primary antibody.

\*The competitor is not affiliated with GeneTex and does not endorse this product.



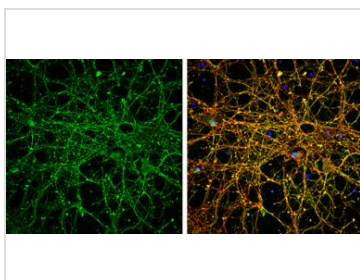
**GTX109638 IHC-P Image**

EEA1 antibody [C3], C-term detects EEA1 protein at cytosol on mouse testis by immunohistochemical analysis.

Sample: Paraffin-embedded mouse testis.

EEA1 antibody [C3], C-term (GTX109638) dilution: 1:500.

Antigen Retrieval: Trilogy™ (EDTA based, pH 8.0) buffer, 15min



**GTX109638 ICC/IF Image**

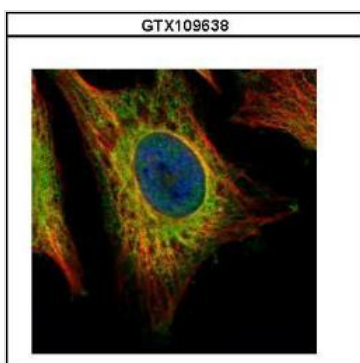
EEA1 antibody [C3], C-term detects EEA1 protein by immunofluorescent analysis.

Sample: DIV9 rat E18 primary cortical neurons were fixed in 4% paraformaldehyde at RT for 15 min.

Green: EEA1 protein stained by EEA1 antibody [C3], C-term (GTX109638) diluted at 1:500.

Red: beta Tubulin 3/ Tuj1, stained by beta Tubulin 3/ Tuj1 antibody [GT886] (GTX631830) diluted at 1:500.

Blue: Fluoroshield with DAPI (GTX30920).



**GTX109638 ICC/IF Image**

Confocal immunofluorescence analysis (Olympus FV10i) of methanol-fixed HeLa, using EEA1(GTX109638) antibody (Green) at 1:500 dilution. Alpha-tubulin filaments were labeled with GTX11304 (Red) at 1:2000.



For full product information, images and publications, please visit our [website](#).