



Catalog Number GTX109389 **Package:** 25 µl, 100 µl Proclin

Product Name Caspr2 antibody [N2N3]

Full Name contactin associated protein-like 2

Synonyms AUTS15 antibody, CASPR2 antibody, CDFE antibody, DKFZp781D1846 antibody, NRXN4 antibody, PTHSL1 antibody, CNTNAP2 antibody, contactin-associated protein-like 2 antibody, cell recognition molecule Caspr2 antibody, contactin-associated protein 2 antibody, homolog of Drosophila neurexin IV antibody, contactin associated protein-like 2 antibody

Product Description Rabbit Polyclonal antibody to Caspr2 (contactin associated protein-like 2)

Background This gene encodes a member of the neurexin family which functions in the vertebrate nervous system as cell adhesion molecules and receptors. This protein, like other neurexin proteins, contains epidermal growth factor repeats and laminin G domains. In addition, it includes an F5/8 type C domain, discoidin/neuropilin- and fibrinogen-like domains, thrombospondin N-terminal-like domains and a putative PDZ binding site. This protein is localized at the juxtaparanodes of myelinated axons and associated with potassium channels. It may play a role in the local differentiation of the axon into distinct functional subdomains. This gene encompasses almost 1.5% of chromosome 7 and is one of the largest genes in the human genome. It may represent a positional candidate gene for the DFNB13 form of nonsyndromic deafness. [provided by RefSeq]

Host Rabbit

Clonality Polyclonal

Isotype IgG

Immunogen Recombinant fragment corresponding to a region within amino acids 287 and 633 of Caspr2 (Uniprot ID#Q9UHC6)

Antigen Species Human

Species Reactivity Human, Mouse

Applications ICC/IF, WB

Application Note	Suggested dilution	Protocol	Reference
ICC/IF	1:100-1:1000*		
Western blot	1:5000-1:20000*		

Not tested in other applications.

*Optimal dilutions/concentrations should be determined by the researcher.

Positive Controls 293T , A431 , H1299 , HeLa , HepG2 , Molt-4 , Raji , mouse brain

Predicted Target Size 148 kDa

Cellular Localization Membrane

Form Supplied Liquid

Purification Purified by antigen-affinity chromatography.

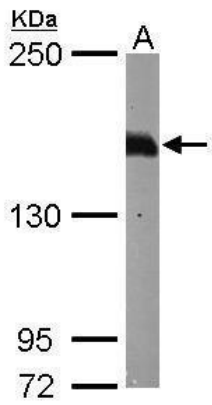
Concentration 1 mg/ml

Storage Buffer 1XPBS, 20% Glycerol (pH7). 0.025% proclin was added as a preservative.

Storage Instruction Keep as concentrated solution. Aliquot and store at -20°C or below. Avoid multiple freeze-thaw cycles.

Notes For *In vitro* laboratory use only. Not for any clinical, therapeutic, or diagnostic use in humans or animals. Not for animal or human consumption.

ResearchArea [Disease Related](#) > [Cardiovascular](#) > [Heart](#) > [Heart disease](#)
[Neuroscience](#) > [Cell type markers](#) > [Glial Cell markers](#)
[Signal Transduction](#) > [ECM/Cytoskeleton](#) > [Cell Adhesion](#)



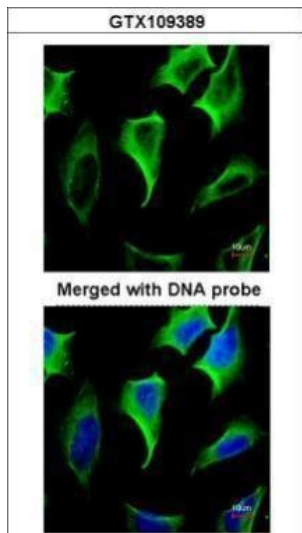
GTX109389_40023_WB_M_brain.jpg

Sample (50 ug of whole cell lysate)

A: Mouse brain

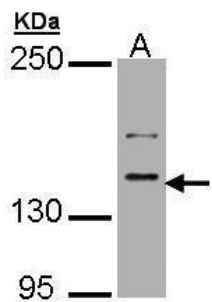
5% SDS PAGE

GTX109389 diluted at 1:10000



GTX109389_IFA.jpg

Immunofluorescence analysis of paraformaldehyde-fixed HeLa, using Caspr2 (GTX109389) antibody at 1:200 dilution.



GTX109389_WB.jpg

Sample (30 ug of whole cell lysate)

A: MOLT4 (GTX27912)

5% SDS PAGE

GTX109389 diluted at 1:5000