



**Catalog Number** GTX108732      Package: 25 µl, 100 µl

Proclin

**Product Name** CD66e antibody

**Full Name** carcinoembryonic antigen-related cell adhesion molecule 5

**Synonyms** CD66e antibody, CEA antibody, DKFZp781M2392 antibody, CEACAM5 antibody, meconium antigen 100 antibody, carcinoembryonic antigen-related cell adhesion molecule 5 antibody

**Product Description** Rabbit Polyclonal antibody to CD66e (carcinoembryonic antigen-related cell adhesion molecule 5)

**Background** Members of the CEACAM subfamily, including CEACAM5, belong to the CEA gene family. For general information on the CEA gene family, see CEACAM1 (MIM 109770).[supplied by OMIM]

**Host** Rabbit

**Clonality** Polyclonal

**Isotype** IgG

**Immunogen** Recombinant fragment corresponding to a region within amino acids 395 and 702 of CD66e (Uniprot ID#P06731)

**Antigen Species** Human

**Species Reactivity** Human

**Applications** ICC/IF, IHC-P, WB

**Application Note**

	Suggested dilution	Protocol	Reference
ICC/IF	1:100-1:1000*		
IHC (Formalin-fixed paraffin-embedded sections)	1:100-1:1000*		
Western blot	1:500-1:3000*		

Not tested in other applications.

\*Optimal dilutions/concentrations should be determined by the researcher.

**Positive Controls** 293T , A431 , H1299 , HeLaS3 , HepG2 , Molt-4 , Raji

**Predicted Target Size** 77 kDa

**Cellular Localization** Cell membrane , GPI-anchor

**Form Supplied** Liquid

**Purification** Purified by antigen-affinity chromatography.

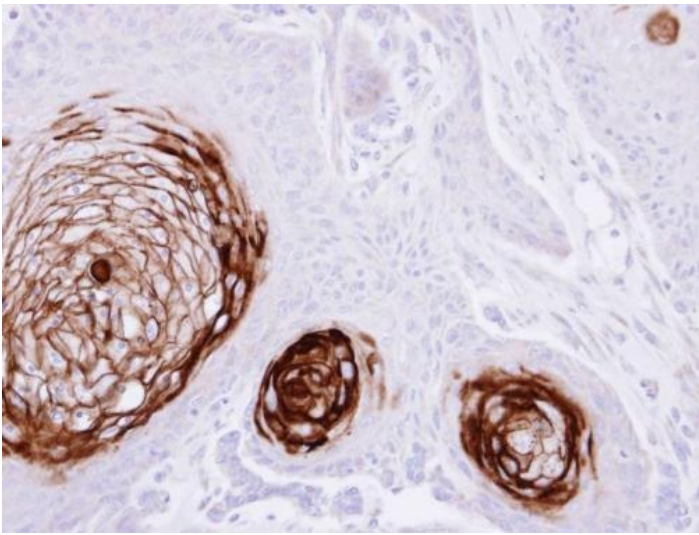
**Concentration** 1 mg/ml

**Storage Buffer** 1XPBS, 20% Glycerol (pH7). 0.025% proclin was added as a preservative.

**Storage Instruction** Keep as concentrated solution. Aliquot and store at -20°C or below. Avoid multiple freeze-thaw cycles.

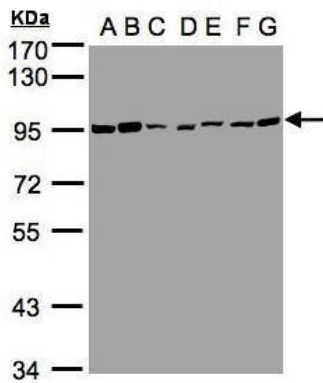
**Notes** For *In vitro* laboratory use only. Not for any clinical, therapeutic, or diagnostic use in humans or animals. Not for animal or human consumption.

**ResearchArea** [Cancer > Tumor biomarkers](#)  
[Immunology > CD marker](#)  
[Stem Cell Development > Stem cells > Mesenchymal Stem Cells](#)



**GTX108732\_IHC.jpg**

Immunohistochemical analysis of paraffin-embedded SG xenograft, using CD66e(GTX108732) antibody at 1:500 dilution.



**GTX108732\_WB.jpg**

Sample(30µg whole cell lysate)

A: 293T

B: A431 (GTX27909)

C: H1299

D: HeLa S3 (GTX14654)

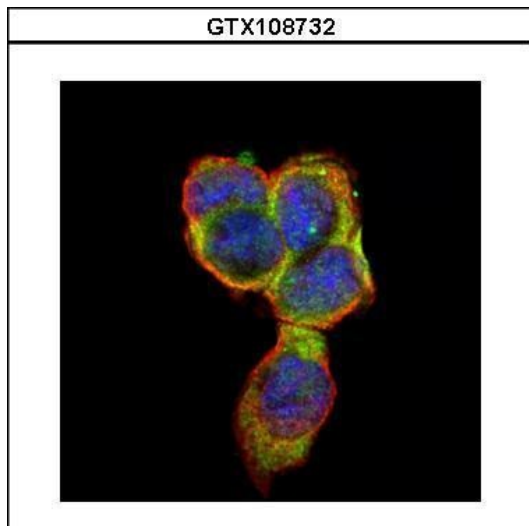
E: Hep G2 (GTX27900)

F: MOLT4 (GTX27912)

G: Raji (GTX27908)

7.5% SDS PAGE

GTX108732 diluted at 1:1000



**GTX108732\_39995\_IFA.jpg**

Confocal immunofluorescence analysis (Olympus FV10i) of paraformaldehyde-fixed A431, using CD66e(GTX108732) antibody (Green) at 1:500 dilution. Alpha-tubulin filaments were labeled with GTX11304 (Red) at 1:2000.

