



Catalog Number GTX101839 Package:25 µl, 100 µl

Proclin

Product Name RPS15 antibody

Full Name ribosomal protein S15

Synonyms MGC111130 antibody, RIG antibody, RPS15 antibody, insulinoma protein antibody, homolog of rat insulinoma antibody, 40S ribosomal protein S15 antibody, ribosomal protein S15 antibody

Product Description Rabbit Polyclonal antibody to RPS15 (ribosomal protein S15)

Background Ribosomes, the organelles that catalyze protein synthesis, consist of a small 40S subunit and a large 60S subunit. Together these subunits are composed of 4 RNA species and approximately 80 structurally distinct proteins. This gene encodes a ribosomal protein that is a component of the 40S subunit. The protein belongs to the S19P family of ribosomal proteins. It is located in the cytoplasm. This gene has been found to be activated in various tumors, such as insulinomas, esophageal cancers, and colon cancers. As is typical for genes encoding ribosomal proteins, there are multiple processed pseudogenes of this gene dispersed through the genome. [provided by RefSeq]

Host Rabbit

Clonality Polyclonal

Isotype IgG

Immunogen Recombinant fragment contain a sequence corresponding to a region within amino acids 1 and 95 of RPS15 (Uniprot ID#P62841)

Antigen Species Human

Species Reactivity Human

Predicted Cross Reactivity species Mouse, Rat, Pig, Chicken, Rhesus Monkey

Predict Reactivity Note Mouse (100%), Rat (100%), Pig (100%), Chicken (100%), Rhesus Monkey (100%)

Applications ICC/IF, IHC-P, WB

Application Note

	Suggested dilution	Protocol	Reference
ICC/IF	1:100-1:1000*		
IHC (Formalin-fixed paraffin-embedded sections)	1:100-1:1000*		
Western blot	1:500-1:3000*		

Not tested in other applications.

*Optimal dilutions/concentrations should be determined by the researcher.

Positive Controls U87-MG , SK-N-SH , IMR32 , SK-N-AS , MCF-7 , MDA-MB-231

Predicted Target Size 17 kDa

Form Supplied Liquid

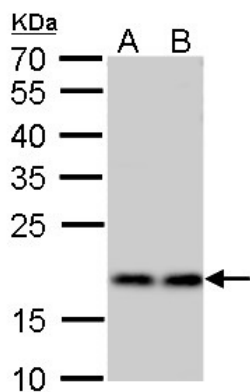
Purification Purified by antigen-affinity chromatography.

Concentration 1 mg/ml

Storage Buffer 1XPBS, 20% Glycerol (pH7). 0.025% proclin was added as a preservative.

Storage Instruction Keep as concentrated solution. Aliquot and store at -20°C or below. Avoid multiple freeze-thaw cycles.

Notes For *In vitro* laboratory use only. Not for any clinical, therapeutic, or diagnostic use in humans or animals. Not for animal or human consumption.



GTX101839 RPS15 antibody WB Image

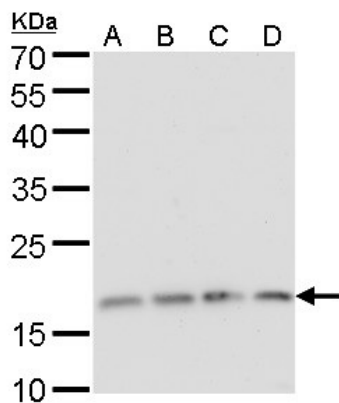
RPS15 antibody detects RPS15 protein by Western blot analysis.

A. 30 µg MCF-7

B. 30 µg MDA-MB-231

12 % SDS-PAGE

RPS15 antibody (GTX101839) dilution: 1:1000



GTX101839 RPS15 antibody WB Image

RPS15 antibody detects RPS15 protein by Western blot analysis.

A. 30 µg U87-MG

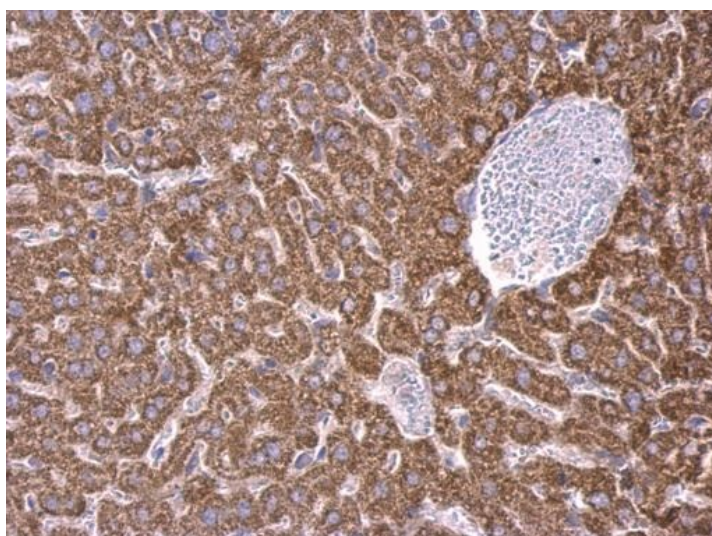
B. 30 µg SK-N-SH

C. 30 µg IMR32

D. 30 µg SK-N-AS

12 % SDS-PAGE

RPS15 antibody (GTX101839) dilution: 1:1000

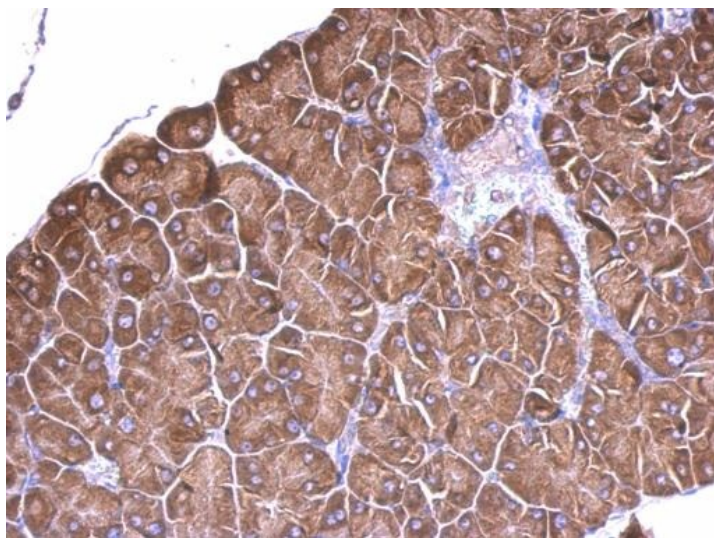


GTX101839 RPS15 antibody IHC-P Image

RPS15 antibody detects RPS15 protein in cytosol on mouse liver by immunohistochemical analysis.

Sample: Paraffin-embedded mouse liver.

RPS15 antibody (GTX101839) dilution: 1:500.

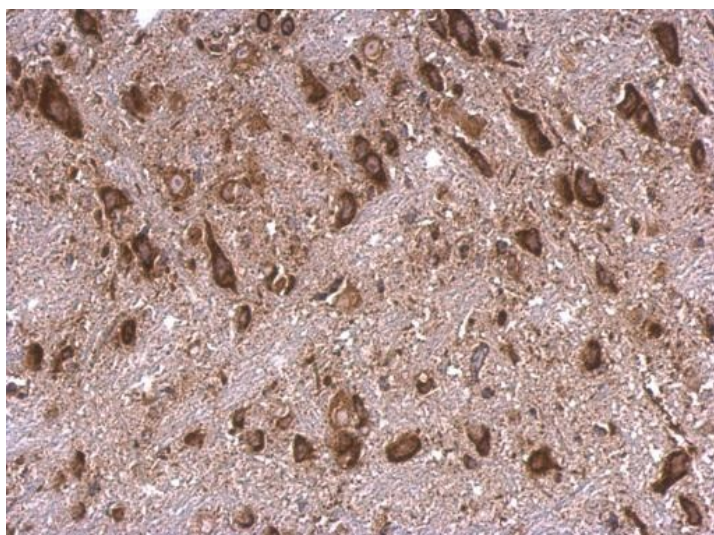


GTX101839 RPS15 antibody IHC-P Image

RPS15 antibody detects RPS15 protein at cytosol on mouse prostate by immunohistochemical analysis.

Sample: Paraffin-embedded mouse prostate.

RPS15 antibody (GTX101839) dilution: 1:500.

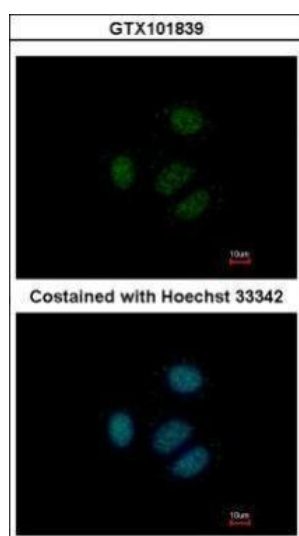


GTX101839 RPS15 antibody IHC-P Image

RPS15 antibody detects RPS15 protein at cytosol on mouse hind brain by immunohistochemical analysis.

Sample: Paraffin-embedded mouse hind brain.

RPS15 antibody (GTX101839) dilution: 1:500.



GTX101839_40450_IFA.jpg

Immunofluorescence analysis of paraformaldehyde-fixed MCF-7, using RPS15(GTX101839) antibody at 1:500 dilution.