



**Catalog Number** GTX101803 **Package:**25 µl, 100 µl **Proclin** **Reference** (1)

**Product Name** ENO1 antibody [N3C3]

**Full Name** enolase 1, (alpha)

**Synonyms** ENO1L1 antibody, MPB1 antibody, NNE antibody, PPH antibody, ENO1 antibody, non-neural enolase antibody, 2-phospho-D-glycerate hydro-lyase antibody, alpha-enolase, c-myc promoter-binding protein-1 antibody, alpha enolase like 1 antibody, tau-crystallin antibody, alpha-enolase antibody, MYC promoter-binding protein 1 antibody, phosphopyruvate hydratase antibody, plasminogen-binding protein antibody, enolase-alpha antibody, "enolase 1, (alpha) antibody"

**Product Description** Rabbit Polyclonal antibody to ENO1 (enolase 1, (alpha))

**Background** This gene encodes one of three enolase isoenzymes found in mammals; it encodes alpha-enolase, a homodimeric soluble enzyme, and also encodes a shorter monomeric structural lens protein, tau-crystallin. The two proteins are made from the same message. The full length protein, the isoenzyme, is found in the cytoplasm. The shorter protein is produced from an alternative translation start, is localized to the nucleus, and has been found to bind to an element in the c-myc promoter. A pseudogene has been identified that is located on the other arm of the same chromosome. [provided by RefSeq]

**Host** Rabbit

**Clonality** Polyclonal

**Immunogen** Recombinant fragment corresponding to a region within amino acids 199 and 434 of ENO1 (Uniprot ID#P06733)

**Species Reactivity** Human, Mouse,

**Predicted Cross Reactivity species** Rhesus Monkey, Chimpanzee

**Predict Reactivity Note** Rhesus Monkey (100%), Chimpanzee (100%)

**Applications** Dot, ICC/IF, IHC-P, WB

Application Note	Suggested dilution	Protocol	Reference
Dot blot	*		
ICC/IF	1:100-1:1000*		
IHC (Formalin-fixed paraffin-embedded sections)	1:100-1:1000*		
Western blot	1:500-1:3000*		

Not tested in other applications.

\*Optimal dilutions/concentrations should be determined by the researcher.

**Positive Controls** 293T , A431 , H1299 , HeLa , HepG2 , Molt-4 , Raji , mouse brain

**Predicted Target Size** 47 kDa

**Cellular Localization** Cytoplasm , Cell membrane , myofibril , sarcomere , M-band , Isoform MBP-1: Nucleus

**Form Supplied** Liquid

**Purification** Purified by antigen-affinity chromatography.

**Concentration** 1 mg/ml

**Storage Buffer** 1XPBS, 20% Glycerol (pH7). 0.025% proclin was added as a preservative.

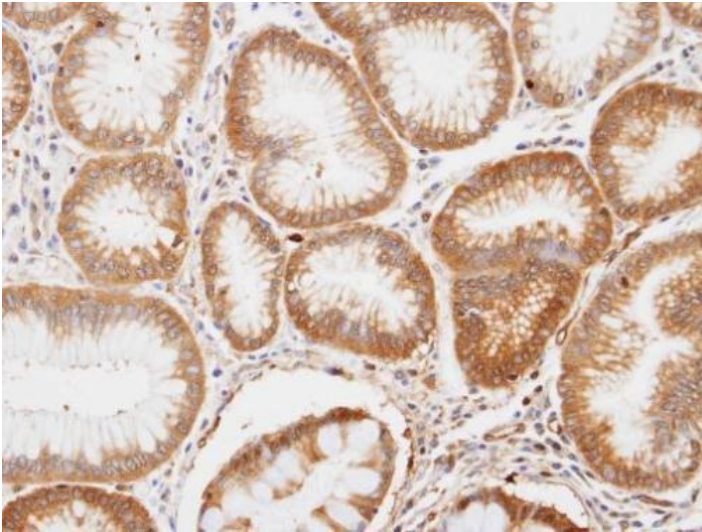
**Storage Instruction** Keep as concentrated solution. Aliquot and store at -20°C or below. Avoid multiple freeze-thaw cycles.

**Notes** For *In vitro* laboratory use only. Not for any clinical, therapeutic, or diagnostic use in humans or animals. Not for animal or human consumption.

**ResearchArea** [Disease Related](#) > [Cardiovascular](#) > [Heart](#) > [Heart disease](#)  
[Metabolism](#) > [Carbonhydrate metabolism](#) > [Glycolysis](#)

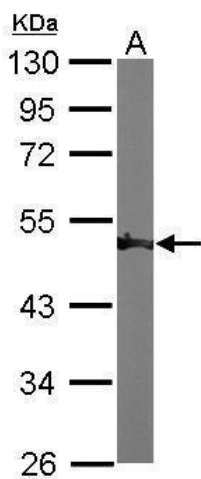
#### Application Reference

1. Hsiao KC (2013) *PLoS One* e69354



#### GTX101803\_39799\_IHC.jpg

Immunohistochemical analysis of paraffin-embedded gastric tissue, using ENO1(GTX101803) antibody at 1:100 dilution.



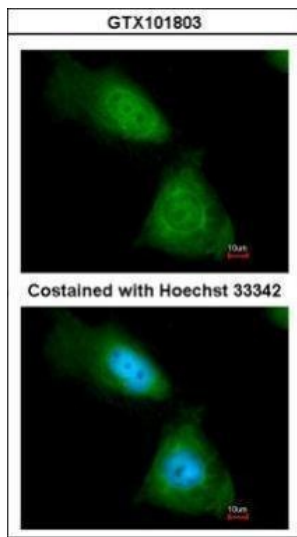
#### GTX101803\_39799\_WB\_M\_brain.jpg

Sample (50 ug of whole cell lysate)

A: Mouse brain

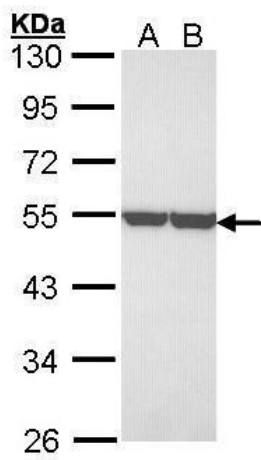
10% SDS PAGE

GTX101803 diluted at 1:1000



**GTX101803\_IFA.jpg**

Immunofluorescence analysis of paraformaldehyde-fixed HeLa, using enolase 1(GTX101803) antibody at 1:200 dilution.



**GTX101803\_WB.jpg**

Sample (30 ug of whole cell lysate)

A: A431 (GTX27909)

B: H1299

10% SDS PAGE

GTX101803 diluted at 1:3000