



Catalog Number GTX100805 Package: 25 µl, 100 µl

Proclin

Product Name VEGFD antibody [N3C3]

Full Name c-fos induced growth factor (vascular endothelial growth factor D)

Synonyms VEGF-D antibody, VEGFD antibody, FIGF antibody, vascular endothelial growth factor D antibody, c-fos induced growth factor (vascular endothelial growth factor D) antibody

Product Description Rabbit Polyclonal antibody to VEGFD (c-fos induced growth factor (vascular endothelial growth factor D))

Background The protein encoded by this gene is a member of the platelet-derived growth factor/vascular endothelial growth factor (PDGF/VEGF) family and is active in angiogenesis, lymphangiogenesis, and endothelial cell growth. This secreted protein undergoes a complex proteolytic maturation, generating multiple processed forms which bind and activate VEGFR-2 and VEGFR-3 receptors. This protein is structurally and functionally similar to vascular endothelial growth factor C. [provided by RefSeq]

Host Rabbit

Clonality Polyclonal

Isotype IgG

Immunogen Recombinant fragment corresponding to a region within amino acids 163 and 354 of VEGFD (Uniprot ID#O43915)

Antigen Species Human

Species Reactivity Human

Predicted Cross Reactivity species Mouse, Bovine

Predict Reactivity Note Mouse (81%), Bovine (83%)

Applications IHC-P, WB

Application Note

	Suggested dilution	Protocol	Reference
IHC (Formalin-fixed paraffin-embedded sections)	1:100-1:1000*		
Western blot	1:500-1:3000*		

Not tested in other applications.

*Optimal dilutions/concentrations should be determined by the researcher.

Positive Controls 293T, Molt-4, Raji

Predicted Target Size 40 kDa

Cellular Localization Secreted

Form Supplied Liquid

Purification Purified by antigen-affinity chromatography.

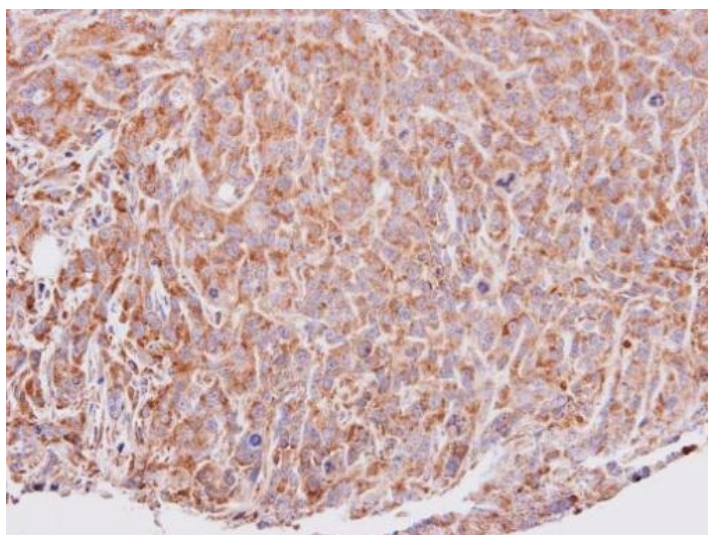
Concentration 0.95 mg/ml

Storage Buffer 1XPBS, 20% Glycerol (pH7). 0.025% proclin was added as a preservative.

Storage Instruction Keep as concentrated solution. Aliquot and store at -20°C or below. Avoid multiple freeze-thaw cycles.

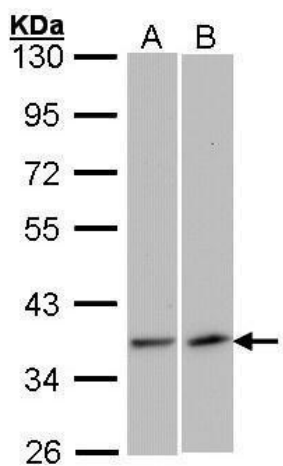
Notes For *In vitro* laboratory use only. Not for any clinical, therapeutic, or diagnostic use in humans or animals. Not for animal or human consumption.

ResearchArea [Cancer](#) > [Angiogenesis](#)
[Cancer](#) > [Type of cancer](#) > [Thyroid](#)
[Disease Related](#) > [Cardiovascular](#) > [Angiogenesis](#)



GTX100805_40093_IHC.jpg

Immunohistochemical analysis of paraffin-embedded SAS xenograft, using VEGFD(GTX100805) antibody at 1:100 dilution.



GTX100805_WB.jpg

Sample (30 ug of whole cell lysate)

A: 293T

B: Raji

10% SDS PAGE

GTX100805 diluted at 1:1000