



Catalog Number GTX100257 **Package:** 25 µl, 100 µl

Proclin

Product Name ERG antibody [C3], C-term

Full Name v-ets erythroblastosis virus E26 oncogene homolog (avian)

Synonyms erg-3 antibody, p55 antibody, ERG antibody, transcriptional regulator ERG antibody, v-ets erythroblastosis virus E26 oncogene like antibody, v-ets avian erythroblastosis virus E26 oncogene related antibody, transcriptional regulator ERG (transforming protein ERG) antibody, ets-related antibody, TMPRSS2/ERG fusion antibody, v-ets erythroblastosis virus E26 oncogene homolog (avian) antibody

Product Description Rabbit Polyclonal antibody to ERG (transcriptional regulator ERG)

Host Rabbit

Clonality Polyclonal

Isotype IgG

Immunogen Synthetic peptide corresponding to a region within amino acids 419 and 486 of ERG (Uniprot ID#P11308)

Antigen Species Human

Species Reactivity Human, Mouse

Predicted Cross Reactivity species Rat, Xenopus Tropicalis, Pig, Chicken

Predict Reactivity Note Rat (92%), Xenopus Tropicalis (92%), Pig (92%), Chicken (85%)

Applications ICC/IF, WB

Application Note

	Suggested dilution	Protocol	Reference
ICC/IF	1:100-1:1000*		
Western blot	1:1000-1:10000*		

Not tested in other applications.

*Optimal dilutions/concentrations should be determined by the researcher.

Positive Controls H1299 , mouse brain

Predicted Target Size 55 kDa

Cellular Localization Nucleus

Form Supplied Liquid

Purification Purified by antigen-affinity chromatography.

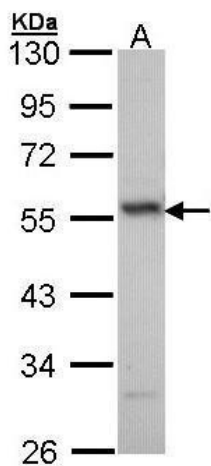
Concentration 1 mg/ml

Storage Buffer 1XPBS, 20% Glycerol (pH7). 0.025% proclin was added as a preservative.

Storage Instruction Keep as concentrated solution. Aliquot and store at -20°C or below. Avoid multiple freeze-thaw cycles.

Notes For *In vitro* laboratory use only. Not for any clinical, therapeutic, or diagnostic use in humans or animals. Not for animal or human consumption.

ResearchArea [Cancer](#) > [Type of cancer](#) > [Prostate cancer](#)



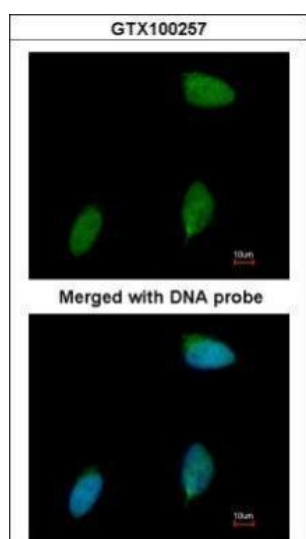
GTX100257_WB.jpg

Sample (30 ug of whole cell lysate)

A: H1299

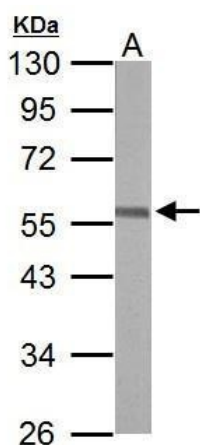
10% SDS PAGE

GTX100257 diluted at 1:1000



GTX100257_IFA.jpg

Immunofluorescence analysis of paraformaldehyde-fixed human pancreatic cancer cell line, using ERG(GTX100257) antibody at 1:50 dilution.



GTX100257_39422_WB_M_brain.jpg

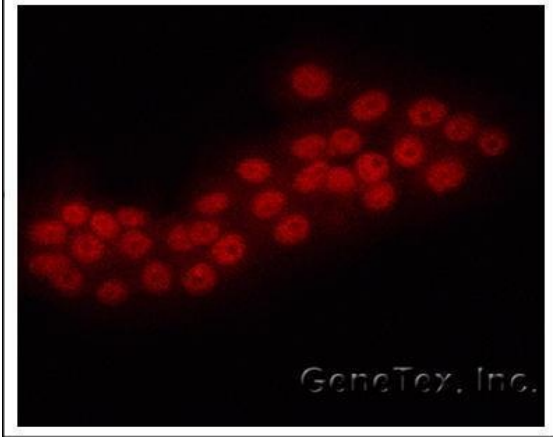
Sample (50 ug of whole cell lysate)

A: mouse brain

10% SDS PAGE

GTX100257 diluted at 1:10000

GTX100257



GTX100257_IFA2.jpg

Immunofluorescence analysis of human pancreatic cancer cell line, using ERG(GTX100257) antibody at 1:50 dilution.